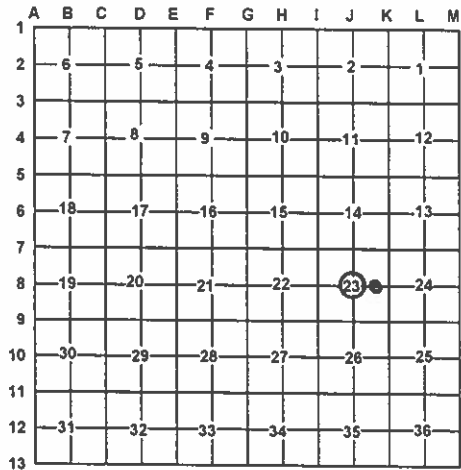


LAND CORNER RECORDATION CERTIFICATE
Filing Requirement of Act 74, Mich. PA 1970

For Corners In: Presque Isle (County) Located In Corner Code #
1. Public Land Survey T 33N R 2E J-8
2. Property Controlling in Section S 23 T 33N R 2E 9
3. Miscellaneous Property in Section S T R
4. Lot No: Recorded Plat:
5. Private Claims:

Register of Deeds Stamp & File Number



I, Carl T. Kiiskila, in a field survey on June 16, 2008 do hereby state that under requirements of PA 74, Michigan PA of 1970, the corner points mentioned in lines 1 and 2 above were in conformance with regulations and rules therefore as required in the current manual of survey instructions of the United States Department of the Interior, Bureau of Land Management or by a decree of a Court of Law and/or that the corner points mentioned in lines 3, 4 and 5 above were in conformance with the rules of the Michigan Board of Land Surveyors or by a Decree of a Court of Law; established, re-established, monumented, recovered, found as expressed below:
NOTE: Not more than 2 corners, all in the same town and range, may be recorded on this certificate.

A. Description of original monument and accessories and/or subsequent restoration:
J-8 This corner was not set during the original G.L.O. Survey 9- This corner was not set during the original G.L.O. Survey

B. Description of corner evidence found and/or method applies in restoring or re-establishing corner:
J-8 Set the center of section 23 at the intersection of the North-South and East-West one quarter lines.
9- Established the Northeast corner of the Northwest quarter of the Southeast quarter of section 23 per B.L.M. instructions for the subdivision of a section.

C. Description of monument for corner and accessories established to perpetuate locating the position of the corner:
J-8 Set 5/8" X 32" Rod with PS Cap #33981
Wit: Set nail and tag in SW side of a 8" J. Pine N35°W 50.17'
Set nail and tag in NW side of a 6" J. Pine N50°E 55.93'
Set nail and tag in NE side of a 4" J. Pine S55°E 56.50'
Set nail and tag in East side of a 6" J. Pine S29°W 66.55'
Set Carsonite post East 33'±
9- Set 5/8" X 32" Rod with PS Cap #33981
Wit: Set nail and tag in NE side of a 10" R. Pine N62°W 21.90'
Set nail and tag in S side of a 3" J. Pine N82°E 28.87'
Set nail and tag in NE side of a 12" R. Pine S45°E 37.28'
Set nail and tag in NW side of a 8" R. Pine S43°W 44.77'
Set Carsonite Post North 1'±

Signed by: Carl T. Kiiskila
Surveyor's Michigan License No.: 33981

Date: 9-15-08

