

# LAND CORNER RECORDATION CERTIFICATE

Filing Requirement of Act 74, Mich. PA 1970

For Corners In: Presque Isle Located In \_\_\_\_\_ Corner Code # \_\_\_\_\_  
(County)

1. Public Land Survey	T	35N	R	02E	F-5
	T	35N	R	02E	G-5
2. Property Controlling in Section	S	T	R		
	S	T	R		
3. Miscellaneous Property in Section	S	T	R		
	S	T	R		

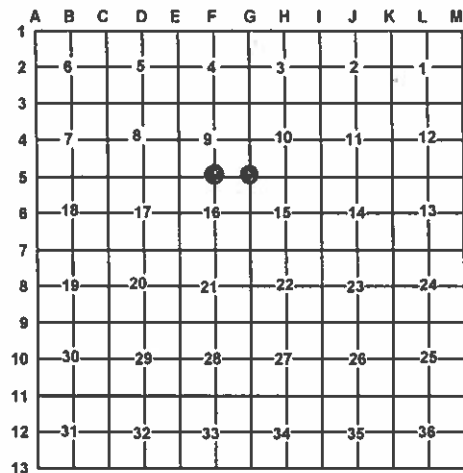
4. Lot No: \_\_\_\_\_ Recorded Plat: \_\_\_\_\_

5. Private Claims: \_\_\_\_\_

I, Carl T. Kiiskila, in a field survey on May 10, 2011 do hereby state that under requirements of PA 74, Michigan PA of 1970, the corner points mentioned in lines 1 and 2 above were in conformance with regulations and rules therefore as required in the current manual of survey instructions of the United States Department of the Interior, Bureau of Land Management or by a decree of a Court of Law and/or that the corner points mentioned in lines 3, 4 and 5 above were in conformance with the rules of the Michigan Board of Land Surveyors or by a Decree of a Court of Law; established, re-established, monumented, recovered, found as expressed below:

**NOTE: Not more than 2 corners, all in the same town and range, may be recorded on this certificate.**

Register of Deeds Stamp & File Number



A. Description of original monument and accessories and/or subsequent restoration:

F-5 – ¼ Corner comm. to sec.'s 9 & 16, T35N, R02E

2001 – Remon L.C.R.C. – L.345, p.691 – Ronald R. Bischer,  
P.S.#22428 – Fd. Conc. Mon. with PS cap#22428  
S08°W 41.43' 24" Norway  
S36°E 10.03' 12" White Pine  
N28°W 18.90' 4" Norway  
N48°E 18.65' 6" Norway

G-5 – Section Corner comm. to sec.'s 9,10,15 & 16, T35N, R02E

2000 – Remon L.C.R.C. – L.340, p.348 – Ronald R. Bischer,  
P.S.#22428 – Fd. Remon. Mon.  
N80°W 13.86' 6" Twin Maple  
S02°W 32.65' 10" Oak  
N32°E 69.36' 20" Oak  
S33°E 66.22' 6" Oak

B. Description of corner evidence found and/or method applies in restoring or re-establishing corner:

F-5 – ¼ Corner comm. to sec.'s 9 & 16, T35N, R02E

Found a concrete monument with PS Cap #22428 fitting R. Bischer's witnesses. Accepted found concrete monument as the best available evidence for the position of the original corner. Found no other evidence to dispute the location for the corner.

G-5 – Section Corner comm. to sec.'s 9,10,15 & 16, T35N, R02E

Found Remon. Mon. in centerline of old fire lane road North centerline of East – West 2 track is 11' South.  
Found no other evidence to dispute the location for the corner.

C. Description of monument for corner and accessories established to perpetuate locating the position of the corner:

F-5 – ¼ Corner comm. to sec.'s 9 & 16, T35N, R02E

Conc. Mon. with PS cap#22428

Wit: \*N43°E 18.59' to set N&T on E side 8" R. Pine  
\*S41°E 10.02' to set N&T on NE side 20" W. Pine  
\*S21°W 41.43' to set N&T on E side 22" R. Pine  
\*N34°W 18.92' to set N&T on E side 7" R. Pine  
Ctr NW-SE 2 track South 31'  
Set Blue Carsonite Post w/ location tag 1' North

\* Witness of previous record

G-5 – Section Corner comm. to sec.'s 9,10,15 & 16, T35N, R02E

Remon. Monument

Wit: N29°E 69.79' to set N&T on W side 20" R. Oak  
S37°E 66.20' to set N&T on E side 7" twin R. Maple  
South 33.21' to set N&T on E side 13",18"&18" Triple R. Oak  
N83°W 13.72' to fd. N&T on R. Maple Stump  
N55°W 62.60' to fd. N&T on NE side 6" W. Pine

Set Blue Carsonite Post w/ location tag 1' North

Surveyor's Michigan License No.: 33981

Carl T. Kiiskila

4-18-12

