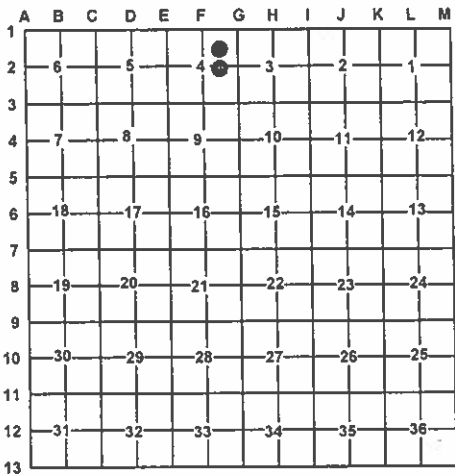


LAND CORNER RECORDATION CERTIFICATE
Filing Requirement of Act 74, Mich. PA 1970

For Corners In: Roscommon Located In Corner Code #
1. Public Land Survey T R
2. Property Controlling in Section S T R
3. Miscellaneous Property in Section S 4 T 24N R 01W 6
S 4 T 24N R 01W 9
4. Lot No: Recorded Plat:
5. Private Claims:

I, Carl T. Kiiskila, in a field survey on January 11, 2011 do hereby state that under requirements of PA 74, Michigan PA of 1970, the corner points mentioned in lines 1 and 2 above were in conformance with regulations and rules therefore as required in the current manual of survey instructions of the United States Department of the Interior, Bureau of Land Management or by a decree of a Court of Law and/or that the corner points mentioned in lines 3, 4 and 5 above were in conformance with the rules of the Michigan Board of Land Surveyors or by a Decree of a Court of Law; established, re-established, monumented, recovered, found as expressed below:

NOTE: Not more than 2 corners, all in the same town and range, may be recorded on this certificate.



A. Description of original monument and accessories and/or subsequent restoration:

6- NE 1/16 corner, section 4, T24N, R01W 9 - CE 1/16 corner, section 4, T24N,R01W
None None

B. Description of corner evidence found and/or method applies in restoring or re-establishing corner:

6- NE 1/16 corner, section 4, T24N, R01W 9 - CE 1/16 corner, section 4, T24N,R01W
Set stamped 2"dia. aluminum cap on 5/8"x34" rebar per standard BLM procedure. Found 1 1/4" galv. pipe at fence corner south and east. Pipe is N18°W 37.9' from calculated position. No record of this corner found, did not accept fd. pipe for the position of the corner. Found no other evidence to dispute the location for the corner.
Set stamped 2" dia. aluminum cap on 5/8"x34" rebar per standard BLM procedure. Corner falls 2.9' north of E-W barbwire fence & 8' east of N-S barbwire fence. Found no other evidence to dispute the location for the corner.

C. Description of monument for corner and accessories established to perpetuate locating the position of the corner:

6- NE 1/16 corner, section 4, T24N, R01W 9 - CE 1/16 corner, section 4, T24N,R01W
2" dia. stamped aluminum cap on 5/8"x34" rebar. 2" dia. stamped aluminum cap on 5/8"x34" rebar.
Wit: N37°E 22.93' to set N& T on W side 17" Tw. R. Oak N71°E 21.64' to set N&T on S side 10&16" Tw. R. Oak S30°W 11.00' to set N&T on SE side 6" Cherry N84°W 30.10' to set N&T on S side 5" B. Fir N18°W 37.9' to fd. 1 1/4" galvanized pipe Set Blue Carsonite Post w/ loc. tag 1' North
Wit: N38°E 27.08' to set N&T on NW side 4" R. Pine S60°E 21.76' to set N&T on N side 13" S. Maple S40°W 11.68' to set N&T on SE side 7" R. Pine N26°W 25.09' to set N&T on NE side 7" W. Pine S84°W 7.9' to Fence corner wire N&E Set Blue Carsonite Post w/ loc. tag 1' North

Surveyor's Michigan License No.: 33981

