

LAND CORNER RECORDATION CERTIFICATE
Filing Requirement of Act 74, Mich. P.A. 1970

For corners in

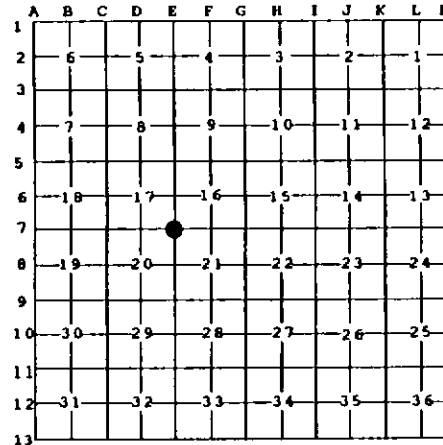
| <u>Common</u> (County) | Located In: | Corner Code # |
|---------------------------------------|-------------------------|---------------|
| 1. Public Land Survey | T24N R 2W | E7 |
| | T _____ R _____ | _____ |
| | T _____ R _____ | _____ |
| | T _____ R _____ | _____ |
| 2. Property Controlling in Section | S _____ T _____ R _____ | _____ |
| | S _____ T _____ R _____ | _____ |
| 3. Miscellaneous Property in Sec. | S _____ T _____ R _____ | _____ |
| | S _____ T _____ R _____ | _____ |

Register of Deeds Stamp & File Number

4. Lot No. _____, Recorded Plat _____

5. Private Claims _____

I, Craig W. McVean, in a field survey on July, 1996, do hereby state that under requirements of P.A. 74, Michigan P.A. of 1970, the corner points mentioned in lines 1 and 2 above were in conformance with regulations and rules therefore as required in the current manual of survey instructions of the United States Department of the Interior, Bureau of Land Management or by a decree of a Court of Law and for that the corner points mentioned in lines 3, 4 and 5 above were in conformance with the rules of the Michigan Board of Land Surveyors or by a Decree of a Court of Law; established, re-established, monumented, recovered, found as expressed below:



NOTE: Not more than 2 corners, all in the same town and range, may be recorded on this certificate.

A. Description of original monument and accessories and/or subsequent restoration:

E7 - Set Post - Wm. Burt - 1852
 S. Pine 8" N48°E 36 Lks.
 DO. 7" S42 1/2°W 20 Lks.

- Ros. Co. Rd. Comm - 1967 Rd. Plans
 N45°E 50.24' 24" B. Oak
 S5°W 17.78' 20" B. Oak
 S85°E 31.49' 6" Cherry

- Placed 4" Pipe in Conc.. - G.F. DeLaMater - 1929
 B. Oak 12" S17 1/2°E 211.5'
 Twin B. Oak 12" N59°W 131.6'

Rec. Survey - L. 263P.276 - G. Henning - 1970

- 4" Pipe set in conc. - Survey of Sec. 21 - G. Henning - 1942

B. Description of corner evidence found and/or method applied in restoring or reestablishing corner:

E7 - Sec. Corner Common to Sec. 16, 17, 20 & 21 - Found loose 4" Brass Cup on 4" pipe with conc. base, oriented incorrectly and disturbed in road cut ditch. Reset monument per found DeLaMater & RCRC witnesses. Reset monument fits well with 1/16 cor. & F7 to East and record dimension, West & North. DeLaMater set monument by proportional measurement from East and West. Monument accepted as a careful and faithful re-establishment of the position of the original corner.

C. Description of monument for corner and accessories established to perpetuate locating the position of the corner:

E7 - 4" Land Office Brass Cap on 4" x 36" Iron Pipe w/conc. base with Ring of Stone
 Set up 1'± with carsonite post to S. Side.
 S17°W 212.00' to N&T in E. Side 24" B. Oak (GFD)
 S70°E 31.49' to RCRC Tag in N. Side Dead 8" Cherry (RCRC)
 N50°E 50.3' to CL. Dead 20" B. Oak (RCRC)
 S20°W 17.65' to Set N&T in NW Side 26" B. Oak scribed 'XBT' (RCRC)
 N49°E 69.59' to N&T in NW Side 10" J. Pine scribed 'XBT'
 N16°E 93.35' to N&T in W Side 8" B. Oak scribed 'XBT'
 N63°W 69.40' to N&T in SW Side 5" J. Pine scribed 'XBT'



Signed by Craig W. McVean
 Surveyor's Michigan License No. 39088

Date 11/26/1996