

LAND CORNER RECORDATION CERTIFICATE

Filing Requirement of Act 74, Mich. PA 1970

For Corners In:

Roscommon

(County)

Located In

Corner Code #

1. Public Land Survey	T	24N	R	2W	C-9
	T	24N	R	2W	C-8
2. Property Controlling in Section	S		T		
	S		T		
3. Miscellaneous Property in Section	S		T		
	S		T		

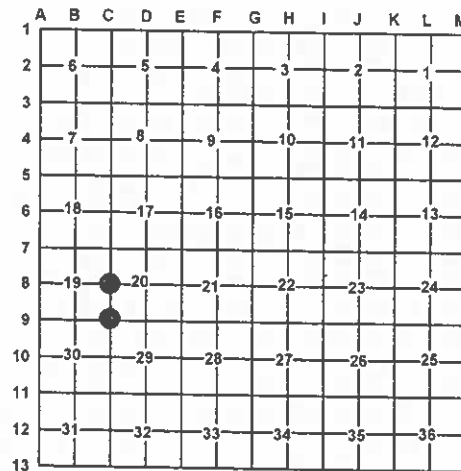
Register of Deeds Stamp & File Number

4. Lot No: Recorded Plat:

5. Private Claims:

I, Carl T. Kiiskila, in a field survey on June 21, 2006 do hereby state that under requirements of PA 74, Michigan PA of 1970, the corner points mentioned in lines 1 and 2 above were in conformance with regulations and rules therefore as required in the current manual of survey instructions of the United States Department of the Interior, Bureau of Land Management or by a decree of a Court of Law and/or that the corner points mentioned in lines 3, 4 and 5 above were in conformance with the rules of the Michigan Board of Land Surveyors or by a Decree of a Court of Law, established, re-established, monumented, recovered, found as expressed below:

NOTE: Not more than 2 corners, all in the same town and range, may be recorded on this certificate.



A. Description of original monument and accessories and/or subsequent restoration:

C-9 G.L.O. 1852 Wm. Burt set post for corner.

Wit: Y. Pine 20" S80°E 62 links
S. Pine 8" N45°W 35 links

C-8 G.L.O. 1852 Wm. Burt Set quarter section post

Wit: S. Pine 8" N16°W 3 links
S. Pine 8" East 25 links

October 1929 G.F. DeLaMater set a Land Office Corner for corner. Wit: Y. Pine 12" S29°E 106.1'
B. Oak 16" N51°E 68.0'

October 1929 G.F. DeLaMater established corner midway and online. Set Land Office Corner. No witnesses given.

B. Description of corner evidence found and/or method applies in restoring or re-establishing corner:

C-9 Set 1" X 32" pipe with standard DNR aluminum cap from G. F. DeLaMater's witnesses.

C-8 Found and accepted 4" pipe with State of Michigan brass cap as set by G.F. DeLaMater.

C. Description of monument for corner and accessories established to perpetuate locating the position of the corner:

C-9 Set 1" X 32" pipe with standard DNR aluminum cap

Wit: 16" R. Pine S29°E 106.40'
28" B. Oak N54°E 68.10'
P. Pole S48°E 14.50'
14" Oak N35°W 63.56'
Centerline of E-W gravel road North 10'
Centerline of Road intersection East 175'

C-8 Found 4" pipe with State of Michigan brass cap

Wit: 8" Maple S37°W 28.88'
9" Spruce N56°W 17.70'
5" Maple N22°W 20.05'
11" J. Pine S38°E 11.70'
Centerline of N-S Road East 35'

Signed by:

Carl T. Kiiskila

Date:

7/18/06

Surveyor's Michigan License No.:

33981

