

MICHIGAN
DEPARTMENT OF CONSERVATION
FORESTRY DIVISION

LAND CORNER RECORD

T. 42 N.R. 15 & 16 W

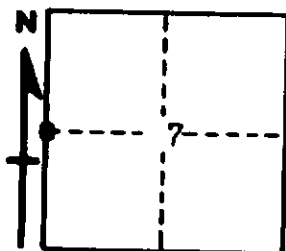
Schoolcraft COUNTY

DESCRIPTION OF CORNER 1/4 Corner for Sections 12, T42N R16W and 7, T42N R15W

CORNER MONUMENT 1" Iron Pipe with 4" Aluminum Cap

DATE MONUMENT PLACED AND WITNESSED 6/17/64 by A.O. Enger - 5/14/65 recorded and monumented by Bray and Hinds.

WITNESSES TO CORNER..... 7" Cedar (1/4S NBT), S 52° E, 22 Lks.



7" Cedar (1/4S NBT), N 83° W, 26 Lks.

AND

CIRCLE CORNER REGISTERED

DESCRIPTION IN DETAIL AS TO HOW CORNER WAS LOCATED AND IDENTIFIED OR RESTORED.

This Corner was placed midway and on line between Section Corners., 40.378 Chs., North and the same distance South. No Original Evidence found.

SURVEYOR'S SEAL

SIGNED

Frank J. Bray
Frank J. Bray

REGISTERED LAND SURVEYOR

DATE

6/8/1965