

J

STATE OF MICHIGAN  
DEPARTMENT  
OF  
NATURAL RESOURCES  
  
LAND CORNER RECORD

SCHOOLCRAFT COUNTY

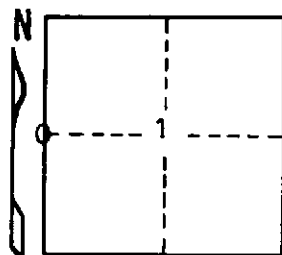
T 43 N R 15 W

DESCRIPTION OF CORNER 1/4 corner for Sections 2/1

CORNER MONUMENT 1" iron pipe with 1/4" aluminum cap

DATE MONUMENT PLACED AND WITNESSED 4/5/72 F. J. Bray with M. Burnis

WITNESSES TO CORNER..... 18" W. Pine (1/4 S NBT) S48°W, 225.0'



AND

CIRCLE CORNER REGISTERED

DESCRIPTION IN DETAIL AS TO HOW CORNER WAS LOCATED AND IDENTIFIED OR RESTORED.

This corner was placed on line and the single proportioned measurement between the section corners to the north and to the south. No original evidence found.

SURVEYOR'S SEAL

DISTRIBUTION:

SIGNED

Frank J. Bray  
REGISTERED LAND SURVEYOR  
Frank J. Bray

DATE

5-12-72

County Courthouse  
Area Forester (Regions I & II)  
District or Region Surveyor  
Forestry Div., Lansing

R 4047  
Rev. 10/68