

LAND CORNER RECORDATION CERTIFICATE
Filing Requirement of Act 74, Mich. P.A. 1970

For comers in

<u>Shiawassee</u> (County)	Located in:	Corner Code #
1. Public Land Survey	T <u>7N</u> R <u>3E</u>	<u>K-6</u>
	T _____ R _____	_____
	T _____ R _____	_____
2. Property Controlling In Section	S _____ T _____ R _____	_____
	S _____ T _____ R _____	_____
3. Miscellaneous Property in Sec.	S _____ T _____ R _____	_____
	S _____ T _____ R _____	_____
4. Lot No. _____	Recorded Plat _____	_____
5. Private Claims _____	_____	_____

SURVEY &
REMONUMENTATION

JAN 16 2001

SECTION

Register of Deeds Stamp
& File Number

I, Mark L. VanRaemdonck, in a field survey on, January 5, 2000, do hereby certify that under requirements of P.A. 74, Michigan P.A. of 1970, the corner points mentioned in lines 1 and 2 above were in conformance with regulations and rules therefore as required in the current manual of survey instructions of the United States Department of the Interior, Bureau of Land Management or by a decree of a Court of Law and/or that the corner points mentioned in lines 3, 4 and 5 above were in conformance with the rules of the Michigan Board of Land Surveyors or by a Decree of a Court of Law; established, re-established, monumented, re-monumented, recovered, found as expressed below:

NOTE: Not more than 2 corners, all in the same town and range, may be recorded on this certificate.

A. Description of original monument and accessories and/or subsequent restoration:

1.) Original, Joseph Wampler, D.S., April 1822.

Monument: Wood Post

Accessories: Sugar 10 S22W 25
Sugar 9 N39½E 15

2.) H.C. Main, County Surveyor, County Surveyor's Book page 168-169,

June 13 and 14, 1887.

Monument: Not given

Accessories: Elm 18 N13°35'E 145 3/4
W. Oak 6 S16½°E 137

3.) John F. Quine, L.C.R.C., recorded Liber 1, page 432, March 4, 1975.

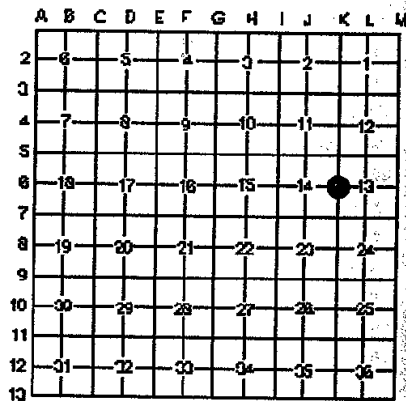
Monument: Found 3/4" pipe stake 12" deep. Brought to surface of pavement with 12" iron boat spike.

Accessories: Cen. Tele. Pole N62°30'W 75.0'
Cen. Tele. Pole S85°W 29.0'
Cen. Cottonwood, 15" S40°15'E 91.0'
SW cor. frnd. of bldg. N72°15'E 70.7'
NW cor. frnd. of same bldg. N62°30'E 75.75'

4.) Mark L. VanRaemdonck, Certified Survey, recorded Liber 5, page 180, June 12, 1989.

Monument: Found 1/2" rerod

Accessories: S85°W 28.40' RR spike E. face U/P
East 34.80' Nail W. face U/P
N50°E 31.40' Top cen. S. end 12" conc. culv.
N70°E 70.85' SW cor. bldg.



APPROVED

County Remonumentation
Peer Review Group

NCC 13 NOV 00

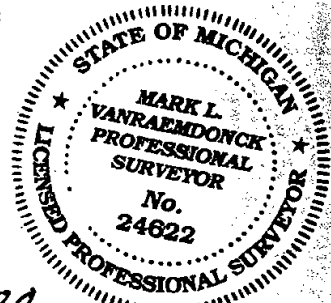
B. Description of corner evidence found and/or method applied in restoring or re-establishing corner:

Searched apparent location of corner. Found boat spike as referenced in No. 3 and No. 4 above. Found no conflicting evidence and accepted this location as the original corner position based on the best available evidence. Found a 3/4" pipe below boat spike. Found no further evidence during excavation for harrison marker.

C. Description of monument for corner and accessories to perpetuate locating the position of the corner:

Replaced boat spike and pipe with a standard Shiawassee County harrison marker monument. The marker is stamped "Remon P.S. 24622" and is witnessed by the following accessories:

S50°W 35.47' N&T #24622 E. face 12" Elm
West 20.29' Top cen. S. end 12" conc. culv.
N35°E 31.37' Top cen. S. end 12" conc. culv.
S60°E 40.02' Top cen. Tele. Ped.



Signed by Mark L. VanRaemdonck

Date 10-17-00

Surveyor's Michigan License No. 24622

FORM APPROVED BY MICHIGAN STATE BOARD OF LAND SURVEYORS JAN 18, 1971
REVISED MAY 14, 1975
REVISED JAN, 1983

Barcode:  24622

3043886
Page: 1 of 1
11/17/2000 09:33A
L-1 P-339

Kaye Grubba - Shiawassee Co. REMON