

SURVEY &  
REMONUMENTATION

MAY 05 1997

1996 REMONUMENTATION PROGRAM

COMMISSION

LAND CORNER RECORDATION CERTIFICATE

Filing Requirement of Act 74, Mich. P.A. 1970

For corners in Juniata Township

TUSCOLA

(County)

Located In:

Corner Code #/

1. Public Land Survey

T 12N R 8E

A-4

T 12N R 7E

M-4

2. Property Controlling  
in Section

S T R

S T R

3. Miscellaneous

S T R

Property in Sec.

S T R

4. Lot No. , Recorded Plat

5. Private Claims

I, Kenneth D. Dunton, in a field survey on October 21, 1995

do hereby certify that under requirements of P.A. 74, Michigan P.A. of 1970, the corner points mentioned in lines 1 and 2 above were in conformance with regulations and rules therefore as required in the current manual of survey instructions of the United States Department of the Interior, Bureau of Land Management or by a decree of a Court of Law and/or that the corner points mentioned in lines 3, 4 and 5 above were in conformance with the rules of the Michigan Board of Land Surveyors or by a Decree of a Court of Law; established, re-established, monumented, re-monumented, recovered, found as expressed below:

NOTE: Not more than 4 corners, all in the same town and range, may be recorded on this certificate.

A. Description of original monument and accessories and/or subsequent restoration:

1834 G.L.O. Notes  
Orange Risdon, D.S.  
Set 1/4 Section Post  
W. maple 12 N69W 26L  
Elm 8 S48W 48L  
Corner M-4, T12N-R7E

May 22, 1971 Survey by David T. Rowe, L.S. #11192 recorded in Liber 1, Page 47 Tuscola County Records. Set "T" iron. N75°E 23.28' E. end of 43' x 72" CMP, N75°W 22.74' west end of CMP, North 8.5' center of CMP.  
August 16, 1973 Act 74 form filed by David T. Rowe, R.L.S. #11192 on Page 21, Denmark Township. N30°E 114.25' nail & cap in p.p., N25°W 138.40' nail & cap in t.p., West centerline of pavement. Measured mile 5273.44' & split (2636.72'). Set "T" iron on line.

Section A continued on back of this form.

B. Description of corner evidence found and/or method applied in restoring or reestablishing corner:

Found conc. nail at road surface, found bent "T" iron 0.3' North & 0.11' East of nail. Further investigation uncovered the remains of a 4" square wood post hacked to a point, surrounded by several rocks. Wood post located 0.04' South and 0.18' East of conc. nail found. Accepted wood post as the proper location of Corner A-4.

C. Description of monument for corner and accessories established to perpetuate locating the position of the corner:

Removed wood post and placed concrete monument with standard brass cap stamped Corner M-4, T12N-R7E. Set 11-18-95.

Placed monument box over monument.

S39°42'W 24.35' set 1/2" x 18" re-rod in road shoulder.

S37°52'E 23.98' set 1/2" x 18" re-rod in road shoulder.

N67°07'W 22.97' chiseled notch atop W. end 43' of 72" C.S.P.

N66°10'E 23.28' chiseled notch atop E. end 43' of 72" C.S.P.

N30°35'E 114.62' set T. C. Remon. tag & spike over bottle cap & nail found on face of p. pole.

Note: This corner is common with M-4, T12N-R7E.

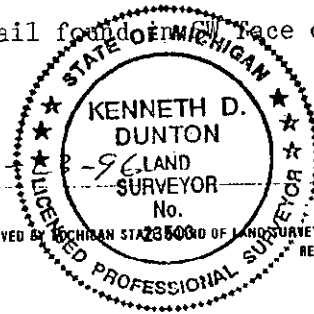
Signed by

Date

Surveyor's Michigan License No. 23503

APPROVED

10-23-96



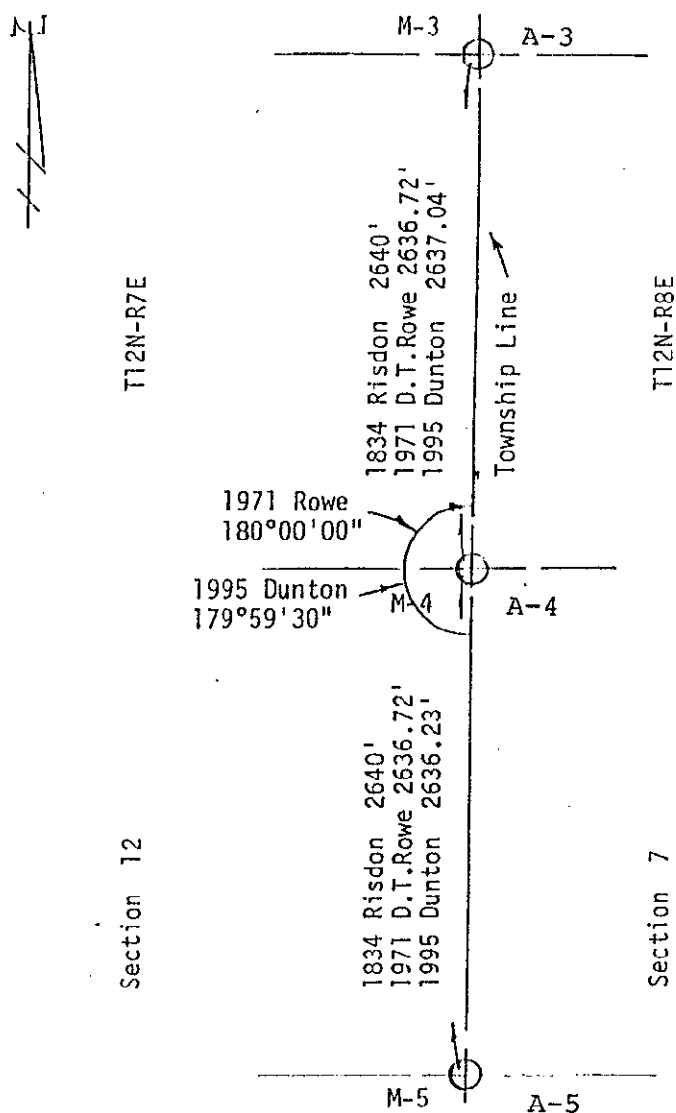
FORM APPROVED BY MICHIGAN STATE BOARD OF LAND SURVEYORS, JAN. 28, 1971  
REVISED MAY 14, 1975  
REVISED JAN., 1983

COPY

Section A continued:

August 6, 1974 Survey by David T. Rowe, R.L.S. #11192, recorded in Liber 445, Page 752 Tuscola County Records. N75°E 23.23' centerline 43' of 72" CMP. N75°W 22.74' centerline 43' of 72" CMP.

April 27, 1987 Survey by Jack N. Owens, L.S. #20709, recorded in Liber 571, Page 1355 Tuscola County Records. Found bent "T" iron, set masonry nail. N30°E 114.25' nail & cap in p.p., West C/L of pavement, North 8.5' C/L of ditch, N75°E 23.23' top of E. end of 43' of 72" CMP.



COPY