

FILED

## VAN BUREN COUNTY REMONUMENTATION PROGRAM

## LAND CORNER RECORDATION CERTIFICATE

Dec 22 9 20 AM '95

For corners in  
Van Buren

Lawrence Twp.

JAN 17 1996

Filing Requirement of Act 74, Mich. P.A. 1970

COMMISSION

Located In:

Corner Code #

(County)

1. Public Land Survey  
SW cor. Sec. 31

T 3S R 15W  
T 3S R 16W  
T 4S R 16W  
T 4S R 15W

A-13

M-13  
M-01  
M-01

2. Property Controlling  
in Section  
3. Miscellaneous  
Property in Sec.

S T R  
S T R  
S T R  
S T R

LIBERTY PAGE 332

Register of Deeds Stamp &amp; File Number

4. Lot No. , Recorded Plat

5. Private Claims

John C. Hunt, P.S.

Nov. 29

95

I, in a field survey on 19 do hereby certify that under requirements of P.A. 74, Michigan P.A. of 1970, the corner points mentioned in lines 1 and 2 above were in conformance with regulations and rules therefore as required in the current manual of survey instructions of the United States Department of the Interior, Bureau of Land Management or by a decree of a Court of Law and/or that the corner points mentioned in lines 3, 4 and 5 above were in conformance with the rules of the Michigan Board of Land Surveyors or by a Decree of a Court of Law; established, re-established, monumented, re-monumented, recovered, found as expressed below:

**NOTE: Not more than 4 corners, all in the same town and range, may be recorded on this certificate.**

## A. Description of original monument and accessories and/or subsequent restoration:

4/1827 Gov.: W. Brookfield DS: Wit.: 6" Pine S18°30'W 52.14', 5" Maple N8°30'E 44.88'. 3/1827 Gov. Ran N on E line sec. 1 Keeler & set temp. 6 mi. post. 3/20/1868: CD Lawton CS: Fd. pine stump of wit. tree & stake, replaced stake. Meas. S 2481.93' to ¼ post. 3/14/1871 AJ Peirce CS: Fd. cor. One wit. stump remains. Fd. stake & renewed w/ good oak. Meas. N 1395.24' & cont. N 1250.70' to ¼ post for total of 2645.94'. Meas. E 2341.02' to ¼ post. 9/1/1884 AA Fosdick CS: Ran E town line of Sec. 36 Hartford Twp. N for a total meas. of 5230.48'. Ran S line W 968.22' to stake, cont. W 322.41' to stake, cont. W 651.42' to stake, & cont. W 656.04' to ¼ post, totaling 2598.09'. Cor. wit.: 10" Maple S21°30'E 23.76'. 1946 TA Smith CS: Used cor. 11/10/1955 WQ Smith CS: Survey shows cor. 8/23/1972 rec. survey L.2 p.283 shows cor. Meas. N 2630.16', meas. E 2345.16'. Cor. rec. L.2-67 pipe. 10/17/1972 Stephan survey L3-136 pipe.

## B. Description of corner evidence found and/or method applied in restoring or reestablishing corner:

A-13 Corner common to Hartford, Lawrence, Keeler & Hamilton Townships:

Found ½" iron rod with cap #23513 over ¾" iron pipe with ring of stones and red brick around it in centerline of road North & South and 10' North of centerline of road to East. Removed irons and set Harrison marker in mon. box.

THIS GOVERNMENT MONUMENT WAS RESTORED WITH APPROVAL OF THE VAN BUREN COUNTY REMONUMENTATION PEER GROUP OF SURVEYORS AT A MEETING HELD ON OCTOBER 25, 1995, AND IS ACCEPTED AS A CAREFUL AND FAITHFUL perpetuation OF THE POSITION OF THE ORIGINAL CORNER.

NOTE: Corner recorded in LCRC L.2 p.67 and in survey recorded in L.002 p.283 & 284 is 13.05' South and 1.80' West of township corner. See sketch on back.

Validated by Peer Group in  
accordance with P.A. 345 of 1990  
Van Buren County Surveyor

Date 10-25-95 D.R.A.

## C. Description of monument for corner and accessories established to perpetuate locating the position of the corner:

A-13 HARRISON MARKER IN MONUMENT BOX

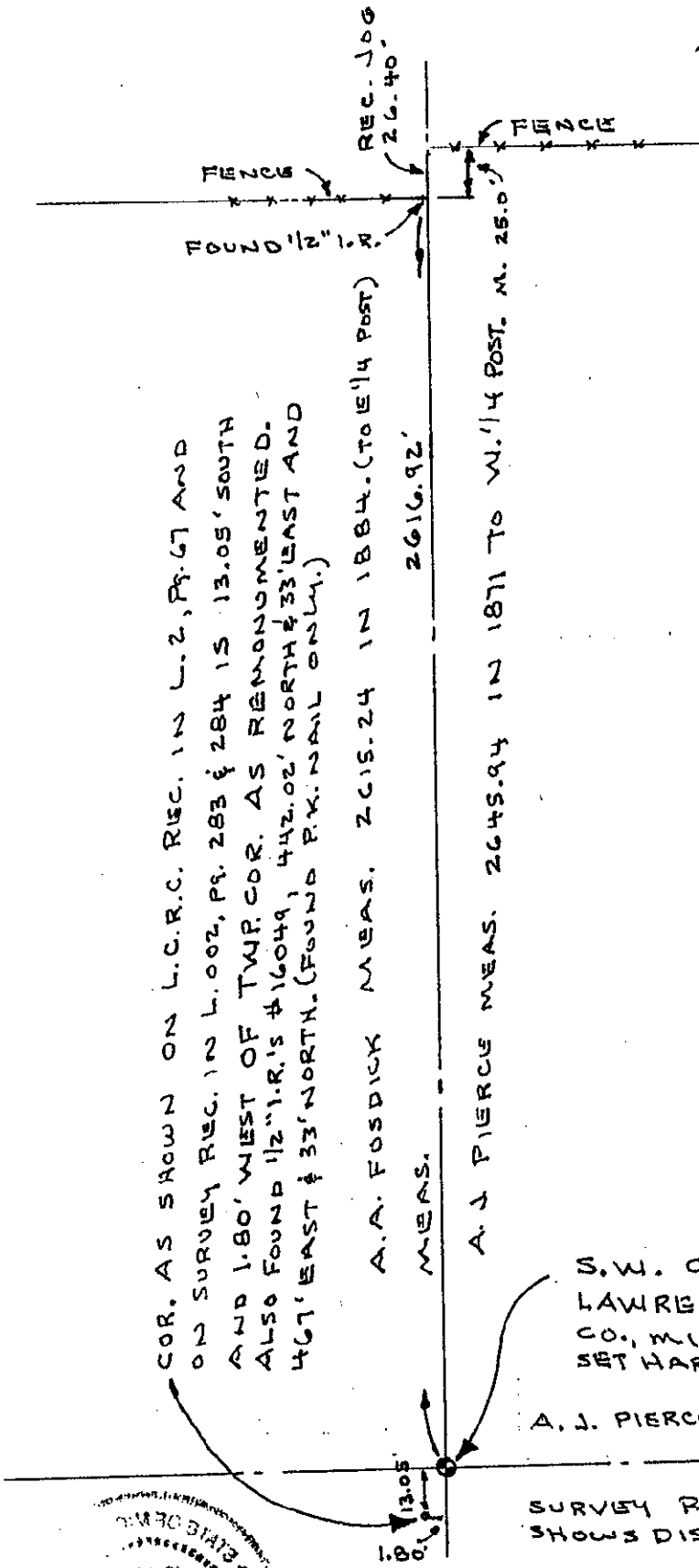
N10°E 135.86' Set PK nail & washer in West face of 8" dia. tree.  
N89°E 232.03' Set PK nail & washer in South face of twin 12-14" dia. tree.  
N70°W 71.69' Set PK nail & washer in South face pole.  
N85°W 106.26' Set PK nail & washer in South face of 12" dia. tree.



Signed by John C. Hunt, P.S.

Date Dec. 20, 1995

Surveyor's Michigan License No. 23513



SKETCH ONLY  
NO SCALE.

S.W. COR. SEC. 31, T.35.-R.18W.,  
LAWRENCE TWP., VAN BUREN  
CO., MI. (TWP. COR.)  
SET HARRISON MARKER AND MON. BOX.

A. J. PIERCE MEAS. 2341.02' TO S. 1/4 POST →

SURVEY REC. IN L.002, P.283 & 284  
SHOWS DIST. OF 2345.16' TO S. 1/4 POST →

