

SURVEY & REMONUMENTATION

RC 1550

APR 25 1995

LAND CORNER RECORDATION CERTIFICATE
Filing Requirement of Act 74, Mich. P.A. 1970

L127800PA039

For corners in

WAYNE
(County)

Located In:

Corner Code #

1. Public Land Survey

T 1 S R 8 E

K-9

2. Property controlling
in Section

S T R

3. Miscellaneous

S T R

Property in Sec.

S T R

4. Lot No. , Recorded Plat

5. Private Claims

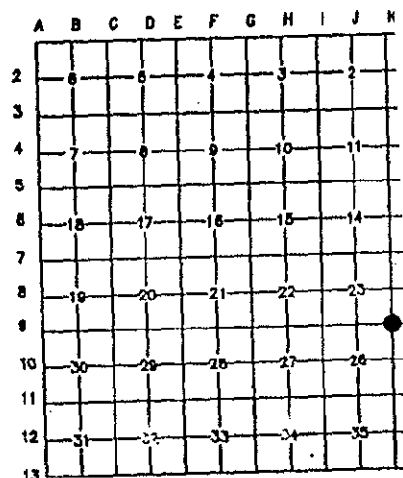
Compliance with
ACT 345, P.A. 1990

APPROVED ON: 12-21-94
WAYNE COUNTY REMONUMENTATION
PEER GROUP COMMITTEE

Register of Deeds Stamp & File Number

I, PAUL V. SCHWIMMER, in a field survey on DECEMBER 20, 1994 do hereby certify that under requirements of P.A. 74, Michigan P.A. of 1970, the corner points mentioned in lines 1 and 2 above were in conformance with regulations and rules therefore as required in the current manual of survey instructions of the United States Department of the Interior, Bureau of Land Management or by decree of a Court of Law and/or that the corner points mentioned in lines 3, 4 and 5 above were in conformance with the rules of the Michigan Board of Land Surveyors or by Decree of a Court of Law; established, re-established, monumented, re-monumented, recovered, found as expressed below:

NOTE: Not more than 4 corners, all in the same town and range, may be recorded on this certificate



A. Description of original monument and accessories and/or subsequent restoration:

ORIG. GOVERNMENT NOTES 1815, WITNESSED
BY BALESS JIMMINGS - SET POST (1)
BLACK OAK S25°W 18 LINKS (2)
BLACK OAK 22° N65°E 61 LINKS (3)

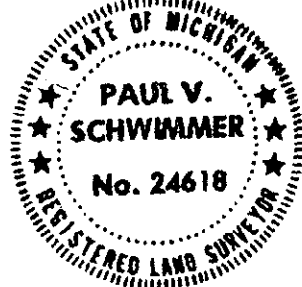
WAYNE CO. BUREAU OF TAXATION (1930'S)
CROSS ON CONC. BASE OF SIGNAL #1281 (4)
S. 10.02 CL W BOUND MAIN (5)

ACT 74 SURVEY L17940 PA229
CHISELED CROSS IN BASE OF SIGNAL TOWER (4)
IN 1971 BY ROBERT CAMPBELL RLS #13028
NLY 1.36 N EDGE OF BASE (6)
ELY 0.18 E EDGE OF BASE (7)
SLY 1.42 S EDGE OF BASE (8)
N.E. 93.42 PK NAIL IN RR COMMUNICATION POLE (9)
S.E. 80.3 POWER POLE (10)
SLY 9.93 CL WEST BOUND MAIN (5)

CONTINUED ON BACK

B. Description of corner evidence and/or method applied in restoring or reestablishing corner:

K-9 THE ONLY INCONSISTENCY WITH THE CHAIN OF WITNESSES FOR THIS STATION IS THAT THE 1930 RESURVEY EFFORT DESCRIBES THE CHISELLED 'X' AS BEING ON THE SOUTH SIDE OF CONCRETE BASE FOR THE RAIL ROAD SIGNAL WHEN IN REALITY, IT IS ON THE EAST SIDE. WE ARE ACCEPTING THIS POSITION AS THE LOCATION OF K-9.



C. Description of monument for corner and accessories established to perpetuate locating the position of the corner:
K-9 FOUND CHISELLED 'X' ON EAST SIDE OF CONC. BASE OF R.R. TRAFFIC SIGNAL (4)
N00°E 1.35 N.E. CORNER OF CONC. BASE (6)
N24°E 93.42 NAIL W/ W.C.R.C. TAG IN POWER POLE (9)
S26°E 80.30 NAIL W/ W.C.R.C. TAG IN POWER POLE (10)
S00°E 1.41 S.E. CORNER OF CONC. BASE (8)
S00°E 9.93 SET P.K. IN R.R. TIE AT CL OF TRACKS (5)

RECEIVED
28 DEC 94 8:16 A.M.
RECEIPT# 4A
RECORDED
FOREST E. YOUNGBLOOD, REGISTER OF DEEDS
WAYNE COUNTY, MI

THE SELECTED LOCATION IS ACCEPTED BY THE CONTRACTOR AND IS GENERALLY ACCEPTED BY PROFESSIONAL SURVEYORS AS THE BEST AVAILABLE EVIDENCE OF THE POSITION OF THE ORIGINAL CORNER

Signed by

Paul V. Schwimmer

Date

12-21-94

Surveyor's Michigan License No.

24618

2 R
14-1
MIS

LI27800PA040

FOUND IN SURVEY CS-64 L17937 PA925
CHISELED CROSS IN BASE OF SIGNAL TOWER (4)
IN 1971 BY ROBERT CAMPBELL RLS #13028
N.E. 93.42 PK NAIL IN RR COMMUNICATION POLE (9)
S.E. 80.3 POWER POLE (10)
SLY 9.93 CL WEST BOUND MAIN (5)

SHOWN ON SURVEY CS-160 L18047 PA838
CHISELED CROSS IN BASE OF SIGNAL TOWER (4)
IN 1972 BY ROBERT CAMPBELL RLS #13028

SHOWN ON SURVEY CS-1776 L21483 PA336
CHISELED CROSS IN BASE OF SIGNAL TOWER (4)
IN 1974 BY THOMAS GILMORE RLS #16930

FOUND IN SURVEY CS-965 L18894 PA434
CHISELED CROSS IN BASE OF SIGNAL TOWER (4)
IN 1974 BY ROBERT CAMPBELL RLS #13028
N.E. 93.42 PK NAIL IN RR COMMUNICATION POLE (9)
S.E. 80.3 POWER POLE (10)
S. 9.93 CL WEST BOUND MAINLINE TRACKS (5)

SHOWN ON SURVEY CS-??? L22697 PA777
CHISELED CROSS IN BASE OF SIGNAL TOWER (4)
IN 1986 BY THOMAS GILMORE RLS #16930

ACT 74 SURVEY L20863 PA515
FOUND CONC. MON IN MON BOX
IN 1980 BY JOHN MCMAHON RLS #4018
N.W. 74.30 NAIL IN DE POLE
S.E. 46.55 NAIL IN DE POLE
S.W. 46.46 NAIL IN DE POLE

THE INFORMATION ON
THIS FORM IS NOT
FOR THIS LOCATION.
IT IS MIS-IDENTIFIED