

SURVEY &  
REMONUMENTATION

NOV 02 1999

LAND CORNER RECORDATION CERTIFICATE  
Filing Requirement of Act 74, Mich. P.A. 1970

SECTION

or corners in

WASHTENAW  
(County)

Located In:

Corner Code ##

Public Land Survey

T 2 S R 3 E

Sylvan Twp.

M - 6

Property Controlling  
in Section

S T R

Miscellaneous

S T R

Property in Sec.

S T R

5017308  
Page: 1 of 2  
02/25/1999 02:59P  
Peggy M. Haines - Washtenaw Co. CORREM L-2 P-183

Register of Deeds Stamp & File Number

Lot No. , Recorded Plat

Private Claims

	A	B	C	D	E	F	G	H	I	J	K	L	M
2	6		5		4		3		2		1		
3													
4	7		8		9		10		11		12		
5													
6	18		17		16		15		14		13		
7													
8	19		20		21		22		23		24		
9													
10	30		29		28		27		26		25		
11													
12	31		32		33		34		35		36		
13													

I. JOHN JEKABSON, in a field survey on 16 December, 1998

do hereby certify that under requirements of P.A. 74, Michigan P.A. of 1970, the corner points mentioned in lines 1 and 2 above were in conformance with regulations and rules therefore as required in the current manual of survey instructions of the United States Department of the Interior, Bureau of Land Management or by a decree of a Court of Law and/or that the corner points mentioned in lines 3, 4 and 5 above were in conformance with the rules of the Michigan Board of Land Surveyors or by a Decree of a Court of Law; established, re-established, monumented, re-monumented, recovered, found as expressed below:

NOTE: Not more than 4 corners, all in the same town and range, may be recorded on this certificate.

A. Description of original monument and accessories and/or subsequent restoration:

1816 G.L.O. - BENJ. HOUGH SET POST Bl.Oak 9" S 10°W 1.09ch.  
Bl.Oak 6" S 50°E 1.30ch.

1969, 14 Jan. ATWELL-HICKS, INC This Survey used an Iron Pipe at North  
Job # 25806 edge of Lake and M-5 to establish East  
Line of the NE ¼ of Section 13 Sylvan.

1994, 19 Aug. WASHTENAW ENG. CO. This Survey also used this Iron at North  
T.L. SUTHERLAND # 24620 edge of Lake and M-5 to establish East  
Job # 25164 Line of the NE ¼ of Section 13 Sylvan.

B. Description of corner evidence found and/or method applied in restoring or reestablishing corner:

THIS CORNER IS IN PIERCE LAKE  
Man-made Lake (water impoundment)

M-6 is established by extending the line between M-5 and above iron in a southerly direction to a point half way between M-5 and M-7.

SEE BACK OF THIS SHEET (NEXT PAGE)



C. Description of monument for corner and accessories established to perpetuate locating the position of the corner:

REFERENCE MONUMENT AT NORTH  
SIDE OF PIERCE LAKE- 50' NORTH  
OF WATER'S EDGE & 916.36 FEET  
NORTH OF M-6 - Found ¼" Iron Pipe  
Set Remon Cap over this Pipe.

Mag & RT in W sd 10" Maple	N 10°W	11.50
Mag & RT in W sd 8" Spruce	N 10°E	4.45
Mag & RT in SW sd 9" Spruce	S 70°E	5.95
Mag & RT in NW sd 8" Spruce	S 50°W	3.20

REFERENCE MONUMENT AT SOUTH SIDE OF  
PIERCE LAKE- 200' SOUTH OF WATER'S EDGE  
& 490.85 FEET SOUTH OF M-6

Set ¼" Iron Pipe w/Remon Cap	S 50°E	47.20
Mag in NE sd 13" Black Walnut	S 05°E	116.93
Mag in top of 4"x4" Wood End Post of Guard Rail	S 69°W	140.51
Most E'ly cor of 25'x40' frm picnic Shelter	S 84°W	149.14
Most N'ly cor of 25'x40' frm picnic Shelter		

I conclude that after careful study of the record documentation and field observations, that this corner is a careful and faithful re-establishment of the position of the original corner.

Legend:  
Mag & RT = Magnetized Nail &  
Washtenaw Co. Remon. Tag  
\* indicates Previously Used

Signed by I. John Jekabson Date 22 December, 1998

Surveyor's Michigan License No. 19836

APPROVED

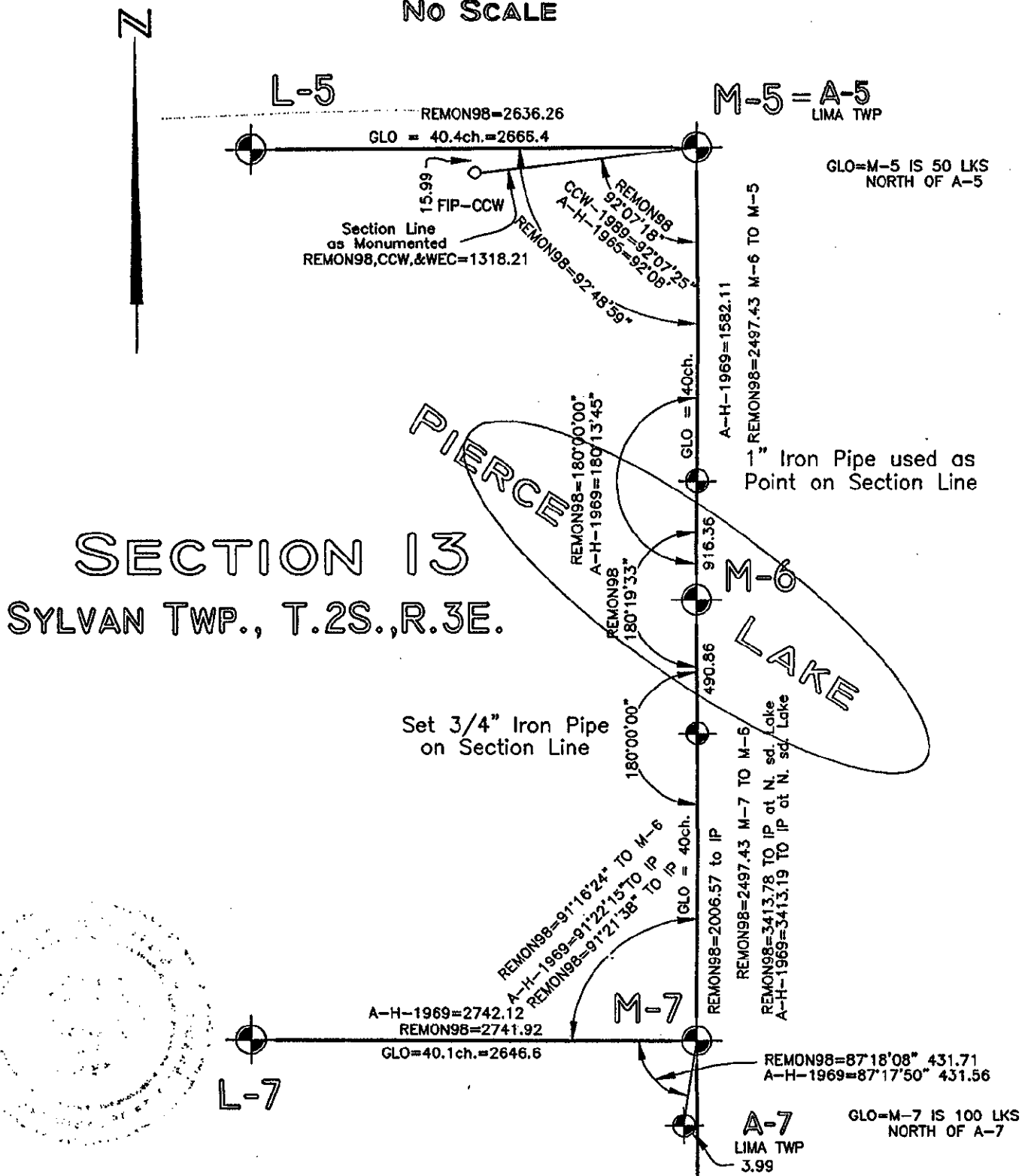
DATE 12-14-98

CO. REP. [Signature]

FORM APPROVED BY MICHIGAN STATE BOARD OF LAND SURVEYORS, JAN. 29, 1971  
REVISED MAY 14, 1975  
REVISED JAN., 1983

COPY

# SKETCH OF M-6 SYLVAN TWP., T.2S.,R.3E. NO SCALE



SURVEY &  
REMONUMENTATION

NOV 02 1999

SECTION



Peggy M. Haines - Washtenaw Co. CORREN

5017308

Page: 2 of 2

02/25/1999 02:59P

L-2 P-184

COPY