

Township N<sup>o</sup> 39 N Range N<sup>o</sup> 29 W.

Mer. Mich.

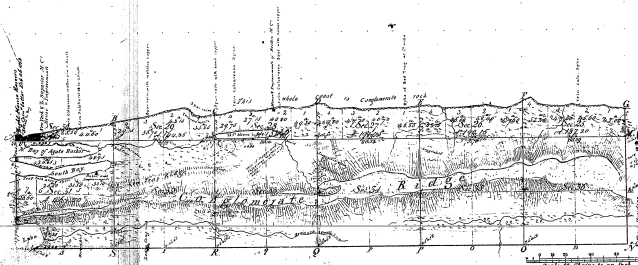
40-23

40-23

Note

Fractional Sections 26 1/2 SE of this Township were reserved for Public purposes by the President of the U.S. on the 2nd of April 1847. As appears by Article of the Council of the Land Land Office dated 10<sup>th</sup> July 1847 on file in this office the Land Officers are not to grant any title or entry of any portion of the lands thus reserved, without specific instructions being first from the Council of the Great Land Office.

LAKE SUPERIOR.



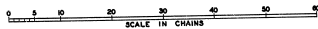
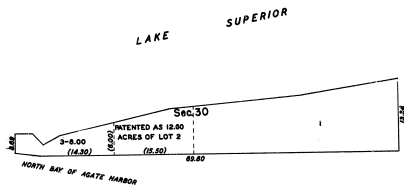
Total number of acres 4 597.45

Survey	By whom	Commenced	Date of Commencement	Amount of Survey	When Surveyed	When Closed
Survey of 1847	J. B. Smith	June 25, 1847	1 25 1/2	1847	1847	
Subdivision	J. B. Smith	August 25, 1847	21 31 1/2	1847	1847	

The above Map of Township N. 39 North of Range 29 West of the 10<sup>th</sup> Principal Meridian is a true and correct copy of the original survey and approved by the Surveyor General's Office  
 August 25, 1847  
 Lucius Lyon, Sur. Genl.

TOWNSHIP 59 NORTH, RANGE 29 WEST, MICHIGAN MERIDIAN, MICHIGAN  
 SUPPLEMENTAL PLAT OF SECTION 30

40-23-2



This supplemental plat, based upon the plats approved September 1, 1847 and March 1853, has been prepared as an administrative measure to provide an area and designation for so much of Lot 2 as was reserved for Lighthouse purposes by Executive Order of December 9, 1852. The new lot has been designated as Lot 3.

UNITED STATES DEPARTMENT OF THE INTERIOR  
 BUREAU OF LAND MANAGEMENT  
 Washington, D.C. February 18, 1909

This plat showing amended lottings, having been correctly prepared in accordance with the regulations, is hereby accepted.

For the Director

*Earl S. Harrington*  
 Cadastral Engineering Staff Officer