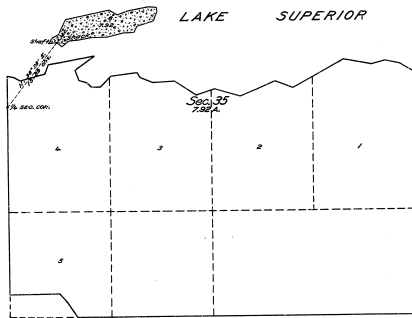


Plat of an Island in Lake Superior, Sec. 35, T. 59 N., R. 30 W., Mich. Mer., Michigan.

40-24
40-24
20



LEGEND.

Scale: 1 inch = 10 chains.

Surveyed by Hal D. Craig, U. S. Surveyor, on October 20 and 21, 1909, under special instructions for Group No. 11, Michigan, dated July 16, 1909, issued by Frank M. Johnson, Supervisor of Surveys, which were approved by the Commissioner of the General Land Office on August 4, 1909.

Area of lands surveyed = 7.32 Acres, not shown upon the original plat approved May 5, 1866.

Areas of previously surveyed lands not shown.

Office of U. S. Supervisor of Surveys.
Denver, Colorado, September 8, 1906.

The above plat of an island in Lake Superior in Section 35, Township No. 59 North, Range No. 30 West, of the Michigan Meridian, Michigan, is strictly conformable to the field notes of the survey thereof, which have been examined and approved.

Frank M. Johnson
U. S. Supervisor of Surveys.

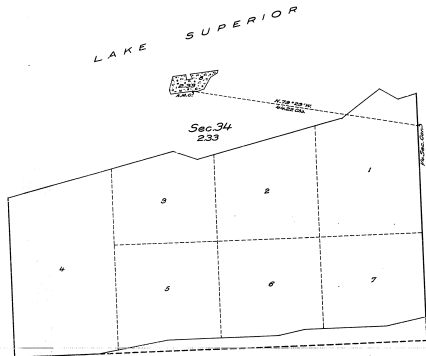
DEPARTMENT OF THE INTERIOR.
GENERAL LAND OFFICE.

Washington, D. C., January 26, 1907.

The survey represented by this plat, having been correctly executed in accordance with the requirements of law and the regulations of this office, is hereby accepted.

W. D. Chandler
Acting Assistant Commissioner.

PLAT OF AN ISLAND
 Lake Superior
 Sec. 34, T. 59 N., R. 30 W., Mich. Mer.
 MICHIGAN.



LEGEND.

Scale: 1 inch = 10 chains.

Surveyed by Guy F. Vail, U. S. Cadastral Engineer, on October 10, 1922, under supplemental special instructions for Group No. 4, Michigan, dated August 25, 1922, issued by Arthur D. Kidder, Associate Supervisor of Surveys, which were approved by the Commissioner of the General Land Office on Sept. 8, 1922.
 Area of lands surveyed = 2.33 Acres, not shown upon the plat approved May 5, 1924.
 Areas of previously surveyed lands not shown.

The undersigned hereby certifies that the survey delineated upon this plat has been executed under his general direction and in accordance with the approved supplemental special instructions issued pursuant to authority conferred upon him by the Secretary of the Interior (approved June 1, 1922), and letter dated June 12, 1922, and that the field notes and the plat of the survey have been carefully verified.

Denver, Colorado.
 January 9, 1924.

William Gray
 Supervisor of Surveys.

Department of the Interior,
 General Land Office.

Washington, D. C., January 22, 1924.

The above plat of an Island in Lake Superior is Section 34, Township 59 North, Range 30 West, of the Michigan Meridian, Michigan, is strictly conformable to the field notes of the survey thereof, on file in this office, which have been examined and approved.

William Gray
 Commissioner and ex officio
 U. S. Surveyor General for Michigan.

40-244
 40-244