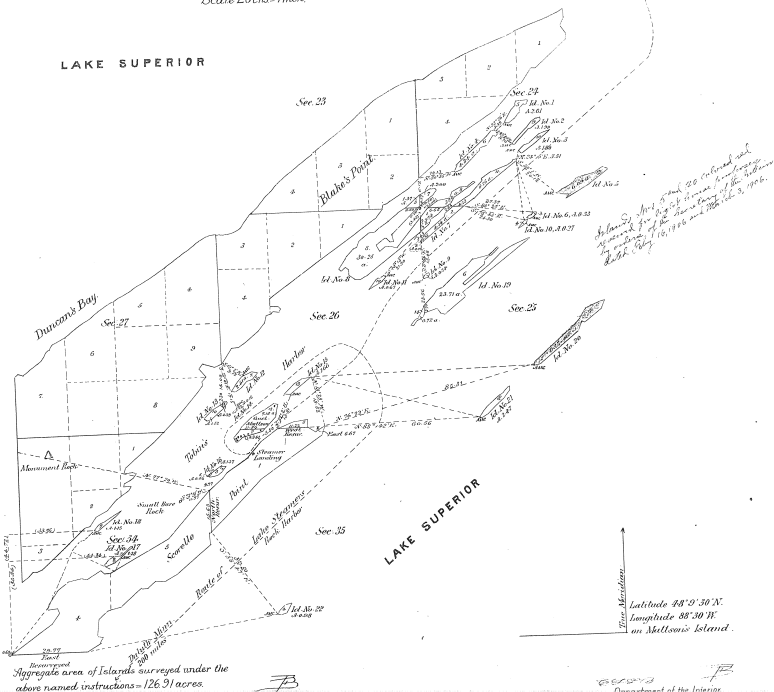


T 100 02 18001 48
 in the Isle Royale Group in Lake Superior
 in Secs. 23, 24, 25, 26, 27, 34 and 35, T 7 N., R. 33 W., Mich. Mer., Michigan.
 Surveyed by Arthur D. Kidder, Examiner of Surveys, U.S. Surveyor, June 26th to July 26th
 1904, incl. under special instructions from the Commissioner G. L. D., bearing date March 17, 1904
 Scale 20chs-1 inch

40-2
 40-2



Approximate
 Aggregate area of Islands surveyed under the
 above named instructions - 126.91 acres.

Department of the Interior,
 General Land Office,
 Washington, D.C., March 28th, 1905.

The above plat of Islands in the Isle Royale Group in Lake Superior, in Secs. 23, 24, 25, 26, 27, 34 and 35,
 T 7 N., R. 33 W., Mich. Mer., Michigan, is a correct plat of a survey executed by Arthur D. Kidder, Examiner of
 Surveys, U.S. Surveyor, in pursuance of special instructions from the Commissioner of the General Land
 Office, bearing date March 17, 1904, and is strictly conformable to the field notes thereon on file in this
 office, which have been examined and approved.

J. H. Fimple
 Acting Commissioner and ex officio
 U.S. Surveyor-General for Michigan

Department of the Interior,
 General Land Office,
 Washington, D.C., August 23, 1906.

I hereby certify that this drawing is a true and literal
 exemplification of the plat of official survey to which
 it purports to relate now on file in this office, and so ap-
 proved by the Acting Commissioner March 28th, 1905.

J. H. Fimple
 Acting Commissioner

Meander corner of fractional sections
26 and 27, on south shore of
Blake's Point

HARBOR

TOBIN'S

Pt. of Beginning

ISLAND No 12
2.61 ACRES

S 40° 01' E
0.60 ch

N 02° 15' E
0.20 ch

N 56° 30' E
3.00 ch

S 21° 15' W
3.00 ch

S 11° 30' W
3.00 ch

N 11° 30' E
3.10 ch

N 70° 45' E
2.20 ch

S 68° 33' W
4.35 ch

N 62° 15' W
2.20 ch

N 142° 30' E
3.50 ch

PLAT OF ISLAND NUMBER TWELVE
SECTION 26, T. 67 N., R. 33 W.
ISLE ROYALE
HOUGHTON TOWNSHIP, Keweenaw County, Michigan

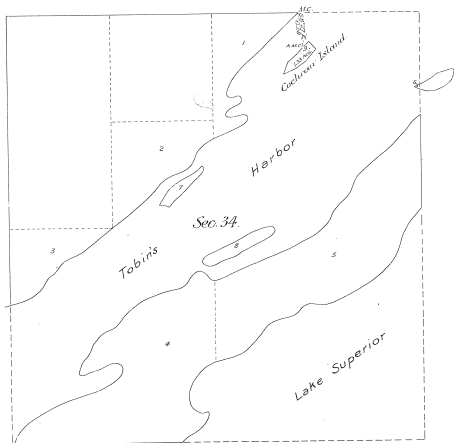
Scale 1 in. = 1 ch.

PLAT OF COCHRAN ISLAND

in Lake Superior
in Sec. 34, T. 67 N., R. 33 W., Michigan Meridian.

MICHIGAN.

Surveyed by Roy W. Nichols, U.S. Deputy Surveyor,
under his special instructions from the Comr. G.L.O. dated August 21, 1909.
Scale 10 chs. to an inch.



Department of the Interior ¹⁰⁸
General Land Office
Washington D. C. December 17, 1909.

The above plat of Cochran Island in Lake Superior, in Sec. 34, T. 67 N., R. 33 W. Michigan Meridian, Michigan, is a correct plat of a survey executed by Roy W. Nichols, U.S. Deputy Surveyor, in pursuance of his special instructions from the Commissioner of the General Land Office, bearing date August 21, 1909, and is strictly conformable to the field notes of the survey thereof on file in this office, which have been examined and approved.

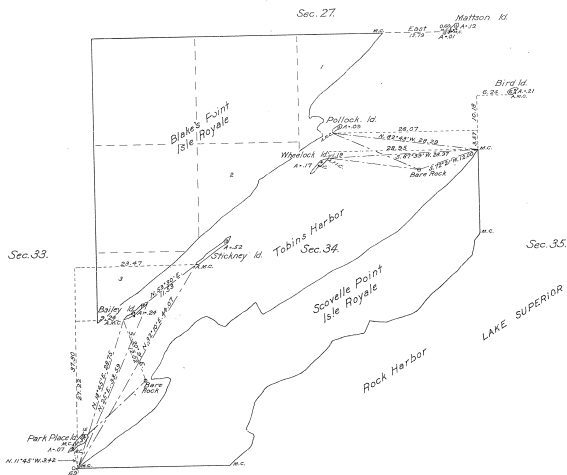

Commissioner and Ex-officio
U.S. Surveyor General of Michigan.

*Plat of Seven Islands in Tobin's Harbor
in the Isle Royale Group, Lake Superior,
in Secs. 27, 33, 34 and 35, T. 67 N., R. 33 W., Michigan Mer.*

MICHIGAN.

*Surveyed by Lester L. Clement, U.S. Surveyor, August 13-18, 1913,
under special instructions from the Com'r G. L. O., dated July 18, 1913.*

Scale: 10 chs. to an inch.



Department of the Interior,
General Land Office,
Washington, D. C., May 17, 1915.

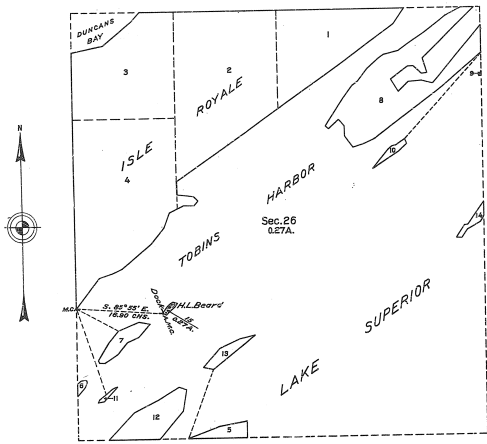
*The above is a correct plat of survey of seven islands in Tobin's Harbor
in the Isle Royale Group, Lake Superior, in Secs. 27, 33, 34 and 35, T. 67 N.,
R. 33 W., Michigan Mer., Michigan, executed by Lester L. Clement, U.S. Surveyor,
in pursuance of special instructions from the Commissioner of the
General Land Office, bearing date July 18, 1913, and is strictly conformable to
the field notes of survey thereof on file in this office, which have been examined and approved.*

G. L. M.

[Signature]
Commissioner and ex-officio
U.S. Surveyor General for Michigan.

TOWNSHIP NO. 67 NORTH, RANGE NO. 33 WEST OF THE MICHIGAN MERIDIAN, MICHIGAN.
 PLAT OF AN ISLAND IN TOBINS HARBOR, LAKE SUPERIOR, SECTION 26.

40-2
 10-2



MEMORANDUM.

THIS PLAT REPRESENTS THE SURVEY OF AN ISLAND IN TOBINS HARBOR IN LAKE SUPERIOR, WHICH WAS NOT SHOWN UPON THE TOWNSHIP PLAT APPROVED JULY 17, 1933.

THE SURVEY WAS EXECUTED PURSUANT TO AUTHORITY CONTAINED IN GENERAL LAND OFFICE LETTER 1450258 "E", DATED APRIL 7, 1934, WHICH BEARS DEPARTMENTAL APPROVAL UNDER DATE OF APRIL 19, 1934.

OFFICE OF U. S. SUPERVISOR OF SURVEYS.
 DENVER, COLORADO, AUGUST 1, 1935.

THE ABOVE PLAT OF AN ISLAND IN TOBINS HARBOR IN LAKE SUPERIOR, SECTION 26, TOWNSHIP NO. 67 NORTH, RANGE NO. 33 WEST OF THE MICHIGAN MERIDIAN, IN THE STATE OF MICHIGAN, IS STRICTLY CONFORMABLE TO THE FIELD NOTES OF THE SURVEY THEREOF, WHICH HAVE BEEN EXAMINED AND APPROVED.

Samuel J. Hanna
 U. S. SUPERVISOR OF SURVEYS.

SCALE: 10 CHAINS TO AN INCH.

AREA SURVEYED, 0.27 ACRES.

LINES DESIGNATED	BY WHOM SURVEYED	GROUP NO.	DATE	MILEAGE		WHEN SURVEYED	
				MLS.	CHD.	BEGUN	COMPLETED
MEANDERS	HAL D. CRAIG,	35	JUNE 29,	0	7.41	SEPT. 23,	SEPT. 29,
CONNECTIONS	U.S. SURVEYOR.			1934.	0	16.50	1934.

DEPARTMENT OF THE INTERIOR.
 GENERAL LAND OFFICE.
 WASHINGTON, D. C., JANUARY 16, 1936.

THE SURVEY REPRESENTED BY THIS PLAT, HAVING BEEN CORRECTLY EXECUTED IN ACCORDANCE WITH THE REQUIREMENTS OF LAW AND THE REGULATIONS OF THIS OFFICE, IS HEREBY ACCEPTED.

Carlisle Trust
 ASSISTANT COMMISSIONER.

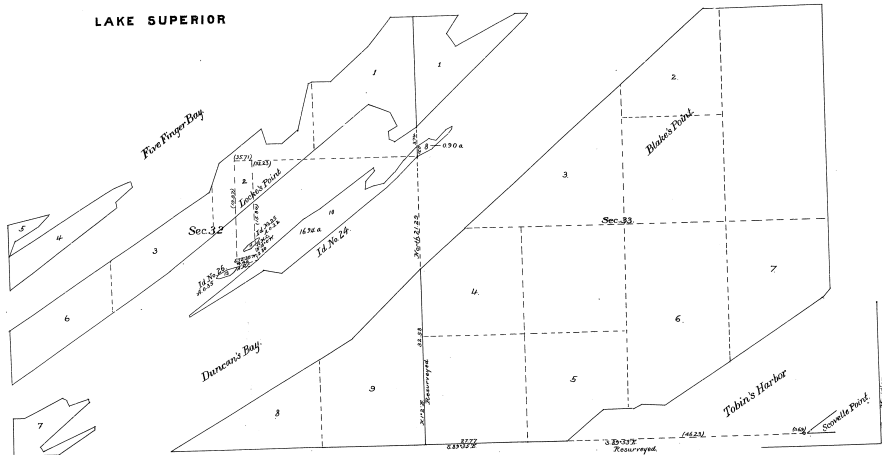
Plat of Islands

40-2
40-2

in the Isle Royale Group in Lake Superior,
in Secs. 32 and 33, T₆P. 67N., R. 33W., Mich. Mer., Michigan,
Surveyed by Arthur D. Kiddle, Examiner of Surveys, U.S. Surveyor, June 26th to July 29th 1904,
incl. under special instructions from the Commissioner G. L. Q., bearing date March 17, 1904.

Scale 10 chs - 1 inch.

LAKE SUPERIOR



Aggregate area of Islands surveyed under the
above named instastations - 1841 acres

Department of the Interior,
General Land Office,
Washington, D.C., March 28th, 1905

Department of the Interior,
General Land Office,
Washington, D.C., August 23, 1906

The above plat of Islands in the Isle Royale Group in Lake Superior in Secs. 32 and 33 T₆P. 67N., R. 33W., Mich. Mer., Michigan, is a correct plat of a survey executed by Arthur D. Kiddle, Examiner of Surveys, U.S. Surveyor, in pursuance of special instructions from the Commissioner of the General Land Office, bearing date March 17, 1904 and is a strictly conformable to the field notes thereof on file in this office which have been examined and approved.

I hereby certify that this drawing is a true and literal
reproduction of the plat of official survey to which it
pertains to relate now on file in this office, and as approved
by the Acting Commissioner, March 28, 1905.

J. H. Simple
Acting Commissioner and ex officio
U.S. Surveyor General for Michigan

J. G. Flood
Acting Commissioner