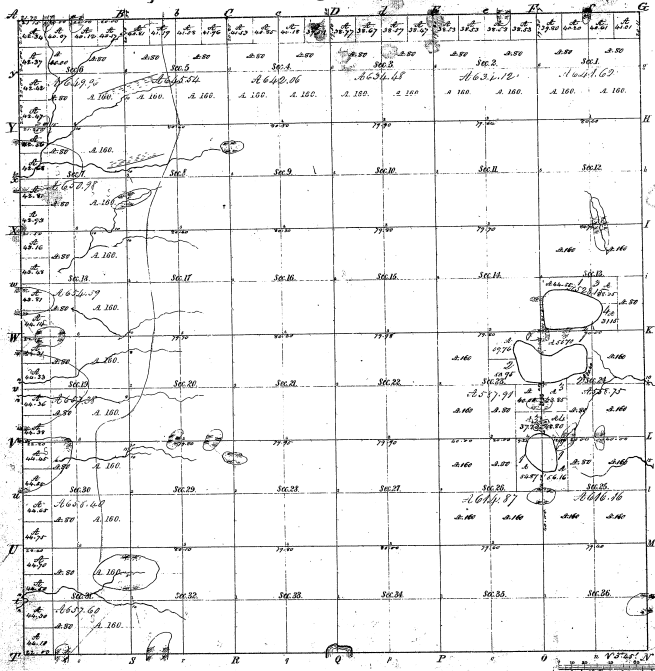


Township N. 21. N. Range N. 21. W. Mer. (Michigan)



Municipality of Saker		Acres	Value	Notes
1	17700	23.88	17700	
2	17700	23.88	17700	
3	17700	23.88	17700	
4	17700	23.88	17700	
5	17700	23.88	17700	
6	17700	23.88	17700	
7	17700	23.88	17700	
8	17700	23.88	17700	
9	17700	23.88	17700	
10	17700	23.88	17700	
11	17700	23.88	17700	
12	17700	23.88	17700	
13	17700	23.88	17700	
14	17700	23.88	17700	
15	17700	23.88	17700	
16	17700	23.88	17700	
17	17700	23.88	17700	
18	17700	23.88	17700	
19	17700	23.88	17700	
20	17700	23.88	17700	
21	17700	23.88	17700	
22	17700	23.88	17700	
23	17700	23.88	17700	
24	17700	23.88	17700	
25	17700	23.88	17700	
26	17700	23.88	17700	
27	17700	23.88	17700	
28	17700	23.88	17700	
29	17700	23.88	17700	
30	17700	23.88	17700	
31	17700	23.88	17700	
32	17700	23.88	17700	
33	17700	23.88	17700	
34	17700	23.88	17700	
35	17700	23.88	17700	
36	17700	23.88	17700	

11-39

Total number of acres 23,880

Survey Designated	By Whom Surveyed	Date of Contract	Amount of Survey	When Surveyed	Approved by the State
Township	F. C.
Subdivisions
Remuneration

This plan map of Township N. 21. N., Range N. 21. W. Meridian of the Principal Meridian Michigan is hereby certified to be a true and correct copy of the original map on file in the office which has been prepared and approved by the Surveyor General of Michigan.

Surveyor General of Michigan
 R. B. ...
 Commission Expires ...