

LAND CORNER RECORDATION CERTIFICATE
Filing Requirement of Act 74, Mich. P.A. 1970

For corners in
CLARE
 (County)

Located In: _____ Corner Code ~~##~~

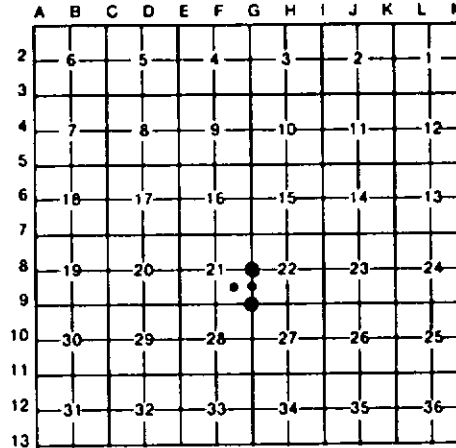
- | | | | | | |
|------------------------------------|---|------------|---|-----------|-----------------|
| 1. Public Land Survey | T | <u>20N</u> | R | <u>5W</u> | <u>6-8, 6-9</u> |
| | T | _____ | R | _____ | _____ |
| | T | _____ | R | _____ | _____ |
| | T | _____ | R | _____ | _____ |
| 2. Property Controlling in Section | S | <u>21</u> | T | _____ | <u>13, 14</u> |
| | S | _____ | T | _____ | _____ |
| 3. Miscellaneous Property in Sec. | S | _____ | T | _____ | _____ |
| | S | _____ | T | _____ | _____ |

Register of Deeds Stamp & File Number

4. Lot No. _____, Recorded Plat _____
 5. Private Claims _____

I, CARL F. ROSER, in a field survey on APRIL 1, 19 91, do hereby certify that under requirements of P.A. 74, Michigan P.A. of 1970, the corner points mentioned in lines 1 and 2 above were in conformance with regulations and rules therefore as required in the current manual of survey instructions of the United States Department of the Interior, Bureau of Land Management or by a decree of a Court of Law and/or that the corner points mentioned in lines 3, 4 and 5 above were in conformance with the rules of the Michigan Board of Land Surveyors or by a Decree of a Court of Law; established, re-established, monumented, re-monumented, recovered, found as expressed below:

NOTE: Not more than 4 corners, all in the same town and range, may be recorded on this certificate.



A. Description of original monument and accessories and/or subsequent restoration:

- | | | |
|-----|--|----|
| 6-8 | 6-9 | 13 |
| | (C. CONTINUED) | |
| | RANDOM N ON S SIDE SEC 22. | |
| | (DROVE SQ'D CED POST W/LOC TAG ALONGSIDE.) | |
| | TOOK NEW NBT-- | |
| | 10" TAMARACK N60°E 94.8' | |
| | (AT W EDGE CEDAR SWP) | |

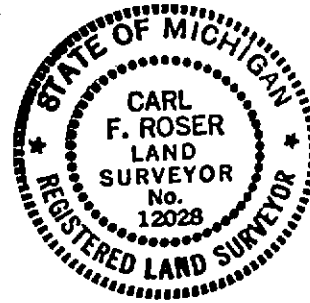
NO OTHER WITS AVAILABLE.

B. Description of corner evidence found and/or method applied in restoring or reestablishing corner:

- | | | | |
|---|--|---|--|
| 6-8 | 6-9 | 13 | 14 |
| REESTAB 1/4 COR COMM TO SEC'S 21 & 22. EQUIDISTANT & ON LINE BETWEEN SEC COR'S TO N & S. FD 1/2" IR ROD W/BLACKSMITH'S EYE ON END (BURIED 2"), N68°W, 23.6', CTR OF TRAIL. C-NE & SW. IS 70°E & 63'S. | SET 1" X 10' PIPE, D.P. TO US. COULD NOT IDENTIFY GLO OR SCHAAF B.T. REMAINS BUT WE ARE VERY CLOSE TO SCHAAF POSITION (HE HAD ORIG EVIDENCE HERE IN 1941). | ESTAB'D NW COR OF SE 1/4 OF SE 1/4 OF SEC 21 PER STANDARD BLM INSTRUCTIONS. CORNER IS ON BRUSHED OUT TRUE LINE TO EAST (N89°52'14"E). SET 3/8" X 8" CABIN SPK'S ON NORTH LINE OF SAID SE 1/4 OF SE 1/4 OF SEC 21. AT 252.74' AND 511.51' E'LY OF SAID NW COR THEREOF. | ESTAB'D NE COR OF SE 1/4 OF SE 1/4 OF SEC 21 PER STD BLM INSTRUCTIONS. W'LY EDGE SWAMP IS 210'± 4' WEST. NW'LY EDGE SWAMP IS 534'± 7'N. COR IS ON BRUSHED OUT TRUE LINE TO WEST. ON NORTH LINE OF SE 1/4 OF SE 1/4 OF S21 (S89°52'14"W). |

C. Description of monument for corner and accessories established to perpetuate locating the position of the corner:

- | | | | |
|---|---|---|--|
| 6-8 | 6-9 | 13 | 14 |
| SET DNR MON & CED POST. 12" OAK N60°W 51.2' 20" OAK N70°E 37.3' 4" BALSAM S40°E 17.4' 15" OAK SOUTH 39.4' | DR 1" X 120" PIPE W/DNR CAP. IN OPEN SWP W/PATCHES OF WILLOW BRUSH & TAG ALDER; ON SW'LY SIDE OF 25'± SLUGGISH STREAM FLOWING NW'LY. STREAM IS WIDER HERE DUE TO NEWER NARROW BEAVER DAM-MEUSE & HOLMQUIST NOTED OTTER SLIDE HERE LAST MARCH WHILE RUNNING (CONTINUED IN "A") | DROVE 5/8" X 34" REROD W/RLS CAP. SET CED POST W/LOC TAG. 3" TW B OAK N70°W 17.6' 8" W OAK S80°E 18.3' 3" B OAK S15°E 12.8' 7" J PINE S45°W 19.4' | PUSHED IN 3/8" X 55" GALV PIPE W/RLS CAP & DROVE CED POST W/LOC TAG. 5" BALSAM N80°W 13.2' 5" BALSAM N40°W 9.3' 9" CEDAR EAST 38.1' 7" SPRUCE S40°W 10.4' N-S RANDOM LINE WEST 23.55' |



Signed by Carl F. Roser Date 8-10-92
 Surveyor's Michigan License No. 12028