



036201

RECORDED HILLSDALE CO. MICH.

00 NOV 17 PM 3:41

LIBER 5 PAGE 54

HILLSDALE COUNTY REMONUMENTATION CORNER LAND CORNER RECORDATION CERTIFICATE Filing Requirement of Act 74, Mich. P.A. 1970

Judy VanZandt REG. OF DEEDS

For corners in

HILLSDALE COUNTY READING TWP (County) Located In: Corner Code # 1. Public Land Survey T 7 S R 4 W J-5 2. Property Controlling S T R in Section S T R 3. Miscellaneous S T R Property in Sec. S T R

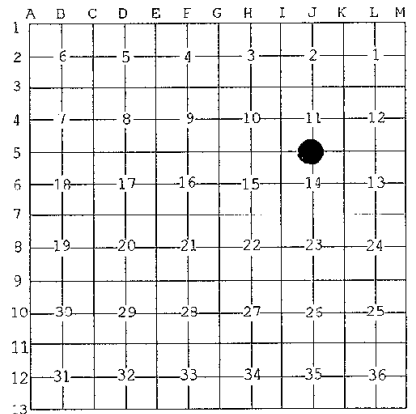
SURVEY & REMONUMENTATION JAN 12 2001 SECTION

Register of Deeds Stamp & File Number

4. Lot No. , Recorded Plat 5. Private Claims

I, EDWARD W. REED, in a field survey on NOVEMBER 1, 2000 do hereby state that under requirements of P.A. 74, Michigan P.A. of 1970, the corner points mentioned in lines 1 and 2 above were in conformance with regulations and rules therefore as required in the current manual of survey instructions of the United States Department of the Interior, Bureau of Land Management or by a decree of a Court of Law and /or that the corner points mentioned in lines 3, 4 and 5 above were in conformance with the rules of the Michigan Board of Land Surveyors or by a Decree of a Court of Law; established, re-established, monumented, recovered, found as expressed below:

NOTE: Not more than 2 corners, all in the same town and range, may be recorded on this certificate.



QUARTER CORNER COMMON TO SECTIONS 11 & 14, READING TOWNSHIP, HILLSDALE COUNTY, MICHIGAN

A. Description of original monument and accessories and/or subsequent restoration:

- 1825: GLO CORNER SET 1882: SURVEY BY MARKS, SURVEYOR, -STONE, PLOW POINT & TILE 1997: SURVEY BY A. RINGENBERG, SURVEYOR, 1/2" IRON & WITNESS

B. Description of corner evidence found and/or method applied in restoring or reestablishing corner:

FOUND 1/2" IRON, NO OTHER EVIDENCE OF OLD CORNER ACCEPTED IRON AS BEST AVAILABLE EVIDENCE SET 3/4" X 30" REBAR IRON WITH REMON CAP IN CAST IRON BOX FLUSH WITH PAVED ROAD SURFACE

C. Description of monument for corner and accessories established to perpetuate locating the position of the corner:

3/4" IRON WITH REMON CAP IN CAST IRON BOX FLUSH WITH PAVED ROAD SURFACE

- PK NAIL IN POWER POLE N72W 129.28' 10" POPULAR N16E 60.61' PK NAIL IN POWER POLE N79E 219.00' PK NAIL IN POLE S71E 275.20' NW CORNER OF TELEPHONE PEDESTAL S43E 31.50'

AND IS ACCEPTED AS A CAREFUL AND FAITHFUL REESTABLISHMENT OF THE POSITION OF THE ORIGINAL CORNER.

Signed by [Signature] EDWARD R. REED

Date NOVEMBER 1, 2000

Surveyor's Michigan License No. 33985

