

FEB 14 1997

**KENT COUNTY REMONUMENTATION**

COMMISSION

**LAND CORNER RECORDATION CERTIFICATE**  
Filing Requirement of Act 74, Mich. P.A. 1970

STATE OF MICHIGAN  
COUNTY OF KENT  
RECEIVED FOR RECORD  
96 MAR 20 AM 8:46  
REG. OF DEEDS  
*[Signature]*

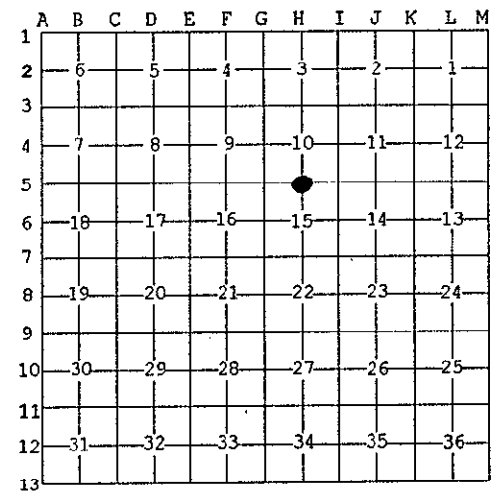
8975

Register of Deeds Stamp & File Number

For corners in KENT COUNTY (County)	Located in:	Corner Code #
1. Public Land Survey	T <u>6N</u> R <u>10W</u>	<u>H-5</u>
	T ___ R ___	_____
	T ___ R ___	_____
	T ___ R ___	_____
2. Property Controlling in Section	S ___ T ___ R ___	_____
	S ___ T ___ R ___	_____
3. Miscellaneous Property in Sec.	S ___ T ___ R ___	_____
	S ___ T ___ R ___	_____

4. Lot No. \_\_\_\_\_, Recorded Plat \_\_\_\_\_  
5. Private Claims \_\_\_\_\_

I, Kirk Breitels, in a field survey on Feb. 6, 1996 do hereby state that under requirements of P.A. 74, Michigan P.A. of 1970, the corner points mentioned in lines 1 and 2 above were in conformance with regulations and rules therefore as required in the current manual of survey instructions of the United States Department of the Interior, Bureau of Land Management or by a decree of a Court of Law and/or that the corner points mentioned in lines 3, 4 and 5 above were in conformance with the rules of the Michigan Board of Land Surveyors or by a Decree of a Court of Law; established, re-established, monumented, recovered, found as expressed below:



NOTE: Not more than 2 corners, all in the same town and range, may be recorded on this certificate.

A. Description of original monument and accessories and/or subsequent restoration:

H-5	1831	GLO	Mullett	Set Post
		Kent Co. Wit.		Stake & Stone
	1977	LCRC #1233	Byl	Conc. Mon.
	1986	LCRC #4394	Chettleburgh	Set Kent County Monument
	1991	LCRC #6089	Unema	Kent County Monument

P.A. 345 1990 KENT COUNTY  
PEER APPROVED 3/7/96  
CHAIRMAN *[Signature]*

The position of this corner was previously approved by the Kent County Remonumentation Peer Group, monumented by Thomas Chettleburgh on 4/30/86 and was recorded per LCRC #4384

B. Description of corner evidence found and/or method applied in restoring or reestablishing corner:  
H-5 Found standard Kent Co. Mon. (Harrison) per witnesses from above LCRC as set by Thomas Chettleburgh in place of the Concrete Monument he found. Said Concrete Monument checks with Kent Co. Wit. and LCRC #1233.  
LCRC #4394 & #6089

Nail & KC Remon. tag N. side 10"	Balsam	S80°E	30.10'	Nail & KC Remon. tag
Nail & KC Remon. tag W. side 30"	Oak	S10°W	11.58'	E. side 17" Oak
Nail & KC Remon. tag NW side 22"	Oak	S59°W	39.13'	N03°E 7.05'
Nail & KC Remon. tag N. side 20"	Oak	N87°W	38.62'	
Nail & KC Remon. tag S. side 12"	Oak	N83°W	14.73'	

The selected location is accepted by me and is generally accepted by professional surveyors as the best available evidence of the position of the original corner.

C. Description of monument for corner and accessories established to perpetuate locating the position of the corner:

H-5 Standard Kent County Monument

Nail & KC Remon. tag N. side 12"	Balsam	S80°E	30.17'
Nail & KC Remon. tag W. side 33"	Oak	S10°W	11.60'
Nail & KC Remon. tag NW side 26"	Oak	S59°W	39.13'
Nail & KC Remon. tag N. side 24"	Oak	N87°W	38.62'
Nail & KC Remon. tag S. side 14"	Oak	N83°W	14.76'
Nail & KC Remon. tag E. side 20"	Oak	N03°E	7.08'



Signed by *[Signature]*  
Surveyor's Michigan License No. 30077

Date 3/1/96