

SURVEY & REMONUMENTATION

APR 27 1995

COMMISSION

KENT COUNTY REMONUMENTATION

LAND CORNER RECORDATION CERTIFICATE
Filing Requirement of Act 74, Mich. P.A. 1970

STATE OF MICHIGAN
COUNTY OF KENT
RECEIVED FOR RECORD

94 DEC -5 AM 8:59

For corners in
KENT COUNTY
(County)

Located In: Corner Code #

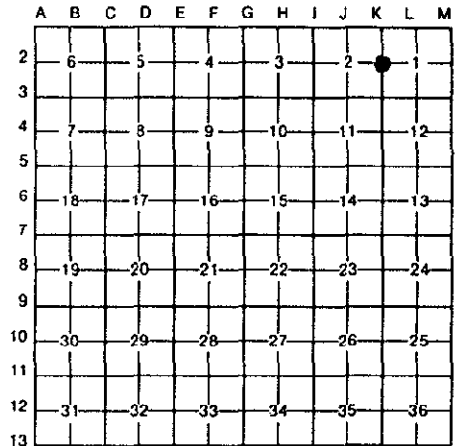
1. Public Land Survey	T 6N R 11W	K-2
	T R	
	T R	
	T R	
2. Property Controlling in Section	S T R	
	S T R	
3. Miscellaneous Property in Sec.	S T R	
	S T R	

W. R. Byl
REG. OF DEEDS

7691

Register of Deeds Stamp & File Number

- 4. Lot No. _____, Recorded Plat _____
- 5. Private Claims _____



I, William R. Byl, in a field survey on Aug. 18, 19 94, do hereby certify that under requirements of P.A. 74, Michigan P.A. of 1970, the corner points mentioned in lines 1 and 2 above were in conformance with regulations and rules therefore as required in the current manual of survey instructions of the United States Department of the Interior, Bureau of Land Management or by a decree of a Court of Law and/or that the corner points mentioned in lines 3, 4 and 5 above were in conformance with the rules of the Michigan Board of Land Surveyors or by a Decree of a Court of Law; established, re-established, monumented, re-monumented, recovered, found as expressed below:

NOTE: Not more than 4 corners, all in the same town and range, may be recorded on this certificate.

A. Description of original monument and accessories and/or subsequent restoration:

K-2	1831	GLO	Mullett	Set Post
		Kent Co. Wit.		Iron & Stone
	1972	LCRC #360	Bonnema	1 1/4" Pipe
	1973	LCRC #607	VanKooten	1 1/2" Iron Pipe-Set "T" Iron inside
	1982	LCRC #2992	Byl	Set Kent County Monument
	1989	LCRC #5004	Bueche	Kent County Monument

P.A. 345 1990 KENT COUNTY
PEER APPROVED 12/1/94
CHAIRMAN *Harry J. Hefner*

The position of this corner was previously approved by the Kent County Remonumentation Peer Group, monumented by William R. Byl on 5/26/82 and was recorded per LCRC #2992

B. Description of corner evidence found and/or method applied in restoring or reestablishing corner:

K-2 Found standard Kent Co. Mon. (Harrison) per witnesses from above LCRC as set by William R. Byl in place of the 1 1/2" x 24" Iron Pipe he found. Said Iron Pipe checks with Kent Co. Wit. and LCRC's #360 & #607

<u>LCRC #2992</u>	<u>LCRC #5004</u>
Nail & tag 8" Tw. Hickory S35°W 54.77'	Same witnesses as LCRC #2992
Nail & tag 6" Tw. Elm S50°E 52.70'	with additional survey data
Nail & tag 8" Quad. Elm N15°E 64.30'	on back.
Nail & tag MBT Pole S70°E 26.59'	

The selected location is accepted by me and is generally accepted by professional surveyors as the best available evidence of the position of the original corner.

C. Description of monument for corner and accessories established to perpetuate locating the position of the corner:

K-2 Standard Kent County Monument:

Set Nail & KC Remon. tag S. side P. Pole	S75°E	28.33'
Set Nail & KC Remon. tag N. side 6" Tree	S30°E	96.60'
Set Nail & KC Remon. tag SE side Lt. Pole	S45°W	49.03'
Set Nail & KC Remon. tag W. side P. Pole	N15°E	108.92'
Face of curb East	23.90'	Face of curb West 34.08'



Signed by *W. R. Byl* Date 112794

Surveyor's Michigan License No. 23502