

**SURVEY & REMONUMENTATION**

FEB 14 1997

**KENT COUNTY REMONUMENTATION**

**COMMISSION**

**LAND CORNER RECORDATION CERTIFICATE**  
Filing Requirement of Act 74, Mich. P.A. 1970

For corners in

**KENT COUNTY**

(County)

Located In:

Corner Code #

1. Public Land Survey

T8N	R 11W	<b>M-11</b>
<del>T8N</del>	<del>R 10W</del>	<del>A-11</del>
T	R	
T	R	
T	R	
T	R	
T	R	
T	R	

2. Property Controlling in Section

S	T	R	
S	T	R	
S	T	R	
S	T	R	

3. Miscellaneous Property in Sec.

4. Lot No. \_\_\_\_\_, Recorded Plat \_\_\_\_\_

5. Private Claims \_\_\_\_\_

STATE OF MICHIGAN  
COUNTY OF KENT  
RECEIVED FOR RECORD  
95 MAR 20 AM 9:00  
REG. OF DEEDS  
*Lucy Stand*

**9128**

Register of Deeds Stamp & File Number

I, **Kirk Breiteles**, in a field survey on **Jan. 22, 1996** do hereby state that under requirements of P.A. 74, Michigan P.A. of 1970, the corner points mentioned in lines 1 and 2 above were in conformance with regulations and rules therefore as required in the current manual of survey instructions of the United States Department of the Interior, Bureau of Land Management or by a decree of a Court of Law and/or that the corner points mentioned in lines 3, 4 and 5 above were in conformance with the rules of the Michigan Board of Land Surveyors or by a Decree of a Court of Law; established, re-established, monumented, recovered, found as expressed below:

NOTE: Not more than 2 corners, all in the same town and range, may be recorded on this certificate.

P.A. 3.3 1900 KENT COUNTY

PEER APPROVED *3/7/96*

CHAIRMAN *Harry Hubert*

1	A	B	C	D	E	F	G	H	I	J	K	L	M
2		6		5		4		3		2		1	
3													
4		7		8		9		10		11		12	
5													
6		18		17		16		15		14		13	
7													
8		19		20		21		22		23		24	
9													
10		30		29		28		27		26		25	
11													
12		31		32		33		34		35		36	
13													

A. Description of original monument and accessories and/or subsequent restoration:

M-11 1831 GLO Mullett Set Post  
1946-55 Williams & Works Fence Corner 582' E. of Grand River  
1987 LCRC #4485 Roosien Set Kent County Monument

The position of this corner was previously approved by the Kent County Remonumentation Peer Group, monumented by Kevin Roosien on 2/9/87 and was recorded per LCRC #4485.

B. Description of corner evidence found and/or method applied in restoring or reestablishing corner:

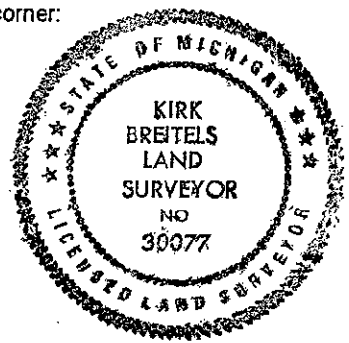
M-11 Found standard Kent Co. Mon. (Harrison) per witnesses from above LCRC as set by Kevin Roosien in place of the 3/4" Pipe he found in line fence to North and West and 595'± East of the Grand River. Monument is in swampy area - check witnesses.  
LCRC #4485

- Nail & KC Remon. tag W. side 40" Sugar Maple S05°W 13.20'
- Nail & KC Remon. tag E. side 6" Maple N15°W 45.32'
- Nail & KC Remon. tag S. side 14" Ash N75°W 55.80'
- Nail & KC Remon. tag N. side 8" Ash S70°W 46.06'

The selected location is accepted by me and is generally accepted by professional surveyors as the best available evidence of the position of the original corner.

C. Description of monument for corner and accessories established to perpetuate locating the position of the corner:

- M-11 Standard Kent County Monument
- New Nail & KC Remon. tag W. side 48" Sugar Maple S05°W 13.21'
  - Nail & KC Remon. tag E. side 8" Maple N15°W 45.26'
  - New Nail & KC Remon. tag S. side 16" Ash N75°W 55.78'
  - New Nail & KC Remon. tag N. side 10" Ash S70°W 46.08'
  - Set Nail & KC Remon. tag N. side 12" Maple N60°E 24.72'



Signed by *Kirk Breiteles*

Date *2/6/96*

Surveyor's Michigan License No. 30077