

SURVEY &

REMONUMENTATION

SEP 18 1995

\$7.00 COMMISSION
\$2.00

KENT COUNTY REMONUMENTATION

LAND CORNER RECORDATION CERTIFICATE
Filing Requirement of Act 74, Mich. P.A. 1970

STATE OF MICHIGAN
COUNTY OF KENT
RECEIVED FOR RECORD

95 MAY 12 AM 10:43

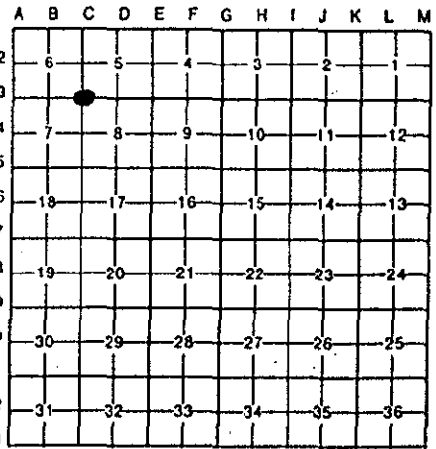
David Bond
REG. OF DEEDS

8364

Register of Deeds Stamp & File Number

For corners in
KENT COUNTY

(County)	Located In:	Corner Code #
1. Public Land Survey	T <u>10N</u> R <u>11W</u>	C-3
	T _____ R _____	_____
	T _____ R _____	_____
	T _____ R _____	_____
2. Property Controlling in Section	S _____ T _____ R _____	_____
	S _____ T _____ R _____	_____
3. Miscellaneous Property in Sec.	S _____ T _____ R _____	_____
	S _____ T _____ R _____	_____
4. Lot No. _____, Recorded Plat _____		
5. Private Claims _____		



I, Kirk Breitels, in a field survey on Feb. 21, 19 95, do hereby certify that under requirements of P.A. 74, Michigan P.A. of 1970, the corner points mentioned in lines 1 and 2 above were in conformance with regulations and rules therefore as required in the current manual of survey instructions of the United States Department of the Interior, Bureau of Land Management or by a decree of a Court of Law and/or that the corner points mentioned in lines 3, 4 and 5 above were in conformance with the rules of the Michigan Board of Land Surveyors or by a Decree of a Court of Law; established, re-established, monumented, re-monumented, recovered, found as expressed below:

NOTE: Not more than 4 corners, all in the same town and range, may be recorded on this certificate.

A. Description of original monument and accessories and/or subsequent restoration:

C-3	1837	GLO	Cathcart	Set Post
	1907-59	Williams & Works		Iron Bolt-Gas Pipe-Conc. Mon.
	1938	Kent Co. Wit.		Iron
	1983	LCRC #3677	Bueche	Set Kent County Monument

The position of this corner was previously approved by the Kent County Remonumentation Peer Group, monumented by John C. Bueche on 12/6/81 and was recorded per LCRC #3677.

B. Description of corner evidence found and/or method applied in restoring or reestablishing corner:

C-3 Found standard Kent Co. Mon. (Harrison) per witnesses from above LCRC as set by John C. Bueche in place of the Conc. Mon. with large spike in top that he found. Said Conc. Mon. checks with Kent Co. Wit. and Williams & Works information.

LCRC #3677

KC Remon. tag & nail N. side 26" Oak	S85°W	87.31'
KC Remon. tag & nail N. side 10" Ch. Elm	N50°E	44.84'
KC Remon. tag & nail N. side dbl. 10" Oak	S70°E	97.76'
KC Remon. tag & nail E. side 36" Oak	S25°W	88.43'
SE cor. conc. slab bell box	N40°W	51.86'
On C/L blacktop road S., gravel road N. is East 2' m/l;		
C/L gravel road E-W 0' m/l		

P.A. 345 1990 KENT COUNTY
PEER APPROVED 4/27/95
CHAIRMAN *Harry Huber*

The selected location is accepted by me and is generally accepted by professional surveyors as the best available evidence of the position of the original corner.

C. Description of monument for corner and accessories established to perpetuate locating the position of the corner:

C-3 Standard Kent County Monument

New KC Remon. tag & nail N. side 33" Oak	S85°W	87.38'
New KC Remon. tag & nail N. side 20" Ch. Elm	N50°E	44.61'
New KC Remon. tag & nail E. side 40" Oak	S25°W	88.44'
SE cor. conc. slab bell box	N40°W	51.79'
On C/L blacktop road S., gravel road N. is East 2' m/l;		
C/L gravel road E-W 0' m/l		



Signed by *Kirk Breitels*
Surveyor's Michigan License No. 30077

Date 4/20/95