

SEP 18 1995

\$7.00 COMMISSION
\$2.00

KENT COUNTY REMONUMENTATION

LAND CORNER RECORDATION CERTIFICATE
Filing Requirement of Act 74, Mich. P.A. 1970

STATE OF MICHIGAN
COUNTY OF KENT
RECEIVED FOR RECORD

95 MAY 12 AM 10:43

For corners in
KENT COUNTY
(County)

Located In: Corner Code #

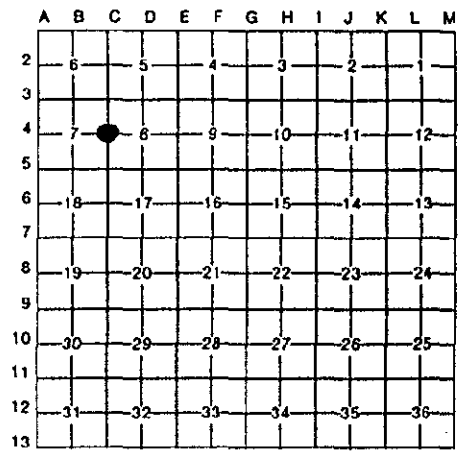
1. Public Land Survey	T 10N R 11W	C-4
	T R	
	T R	
	T R	
2. Property Controlling in Section	S T R	
	S T R	
3. Miscellaneous Property in Sec.	S T R	
	S T R	

W. J. Bond
REG. OF DEEDS

8365

Register of Deeds Stamp & File Number

4. Lot No. _____, Recorded Plat _____
5. Private Claims _____



I, Kirk Breiteis, in a field survey on Feb. 21, 19 95

do hereby certify that under requirements of P.A. 74, Michigan P.A. of 1970, the corner points mentioned in lines 1 and 2 above were in conformance with regulations and rules therefore as required in the current manual of survey instructions of the United States Department of the Interior, Bureau of Land Management or by a decree of a Court of Law and/or that the corner points mentioned in lines 3, 4 and 5 above were in conformance with the rules of the Michigan Board of Land Surveyors or by a Decree of a Court of Law; established, re-established, monumented, re-monumented, recovered, found as expressed below:

NOTE: Not more than 4 corners, all in the same town and range, may be recorded on this certificate.

A. Description of original monument and accessories and/or subsequent restoration:

C-4	1837	GLO	Cathcart	Set Post
	1937	Kent Co. Wit.		1" Iron
	1959	Williams & Works		Concrete Monument
	1983	LCRC #3679	Bueche	Set Kent County Monument

The position of this corner was previously approved by the Kent County Remonumentation Peer Group, monumented by John C. Bueche on 12/6/83 and was recorded per LCRC #3679

B. Description of corner evidence found and/or method applied in restoring or reestablishing corner:

C-4 Found standard Kent Co. Mon. (Harrison) per witnesses from above LCRC as set by John C. Bueche at a point he set. Said point as set checks with Kent Co. Wit. m/l and Williams & Works information.

LCRC #3679

Cut Nail N. side 26" Maple	S80°W	121.00'
Cut Nail E. side 30" Pine	S20°W	122.19'
NE cor. hse. foundation	S45°W	98.0'
KC Remon. tag & nail NW side 8" Elm	N45°E	39.36'
Top C/L Bell Box	N40°W	59.65'

P.A. 345 1990 KENT COUNTY
PEER APPROVED 4/27/95
CHAIRMAN *Harry Hubert*

The selected location is accepted by me and is generally accepted by professional surveyors as the best available evidence of the position of the original corner.

C. Description of monument for corner and accessories established to perpetuate locating the position of the corner:

C-4 Standard Kent County Monument

Set KC Remon. tag & nail N. side 32" Maple	S80°W	121.41'
Set KC Remon. tag & nail E. side 36" Pine	S20°W	122.14'
Set KC Remon. tag & nail W. side 14" Elm	N10°E	114.84'
Set KC Remon. tag & nail SW side 8" Elm	S75°E	28.18'
NE cor. hse. foundation	S45°W	98.04'
KC Remon. tag & nail NW side 8" stump	N45°E	39.38'
Top C/L Bell Box	N40°W	59.65'



Signed by *Kirk Breiteis*

Date 4/20/95

Surveyor's Michigan License No. 30077