

MAY 22 2000

KENT COUNTY REMONUMENTATION

\$7.00
\$2.00

SECTION

LAND CORNER RECORDATION CERTIFICATE
Filing Requirement of Act 74, Mich. P.A. 1970

STATE OF MICHIGAN
COUNTY OF KENT
RECEIVED FOR RECORD
1999 MAR 21 AM 9:10

REG. OF DEEDS

For corners in

KENT COUNTY (County)	Located In:	Corner Code #
1. Public Land Survey	T 10N R 12W	Tyrone Twp. A-3
	T R	
	T R	
	T R	
	T R	
2. Property Controlling in Section	S T R	
	S T R	
3. Miscellaneous Property in Sec.	S T R	
	S T R	

11121

Register of Deeds Stamp & File Number

- 4. Lot No. _____, Recorded Plat _____
- 5. Private Claims _____

I, Kirk Breitels, in a field survey on Feb. 15, 1999 do hereby state that under requirements of P.A. 74, Michigan P.A. of 1970, the corner points mentioned in lines 1 and 2 above were in conformance with regulations and rules therefore as required in the current manual of survey instructions of the United States Department of the Interior, Bureau of Land Management or by a decree of a Court of Law and /or that the corner points mentioned in lines 3, 4 and 5 above were in conformance with the rules of the Michigan Board of Land Surveyors or by a Decree of a Court of Law, established, re-established, monumented, recovered, found as expressed below:

NOTE: Not more than 2 corners, all in the same town and range, may be recorded on this certificate.

	A	B	C	D	E	F	G	H	I	J	K	L	M
1													
2	6		5		4		3		2		1		
3													
4	7		8		9		10		11		12		
5													
6	18		17		16		15		14		13		
7													
8	19		20		21		22		23		24		
9													
10	30		29		28		27		26		25		
11													
12	31		32		33		34		35		36		
13													

A. Description of original monument and accessories and/or subsequent restoration:

A-3 1837	GLO	Brookfield	Set Post
1965	Kent Co. Wits		1" Iron in Mon. Box
1979	LCRC #1315	Nederveld	3/4" Iron in Mon. Box
1983	LCRC #3238	Byl	Set Kent County Monument in Mon. Box
1994	LCRC #7534	J. Glaza	Kent County Monument

P.A. 345 1990 KENT COUNTY
PEER APPROVED 2/25/99
CHAIRMAN [Signature]

The position of this corner was previously approved by the Kent County Remonumentation Peer Group, monumented by William R. Byl on 3-11-83 and was recorded per LCRC #3238.

B. Description of corner evidence found and/or method applied in restoring or reestablishing corner:

A-3 Found Kent County Monument (Harrison) per witnesses from above LCRC as set by William R. Byl in place of the 3/4" Iron Pipe over a 1" Iron Pipe he found in a Mon. Box. Both Iron Pipes check Kent Co. Wit. and LCRC #1315.

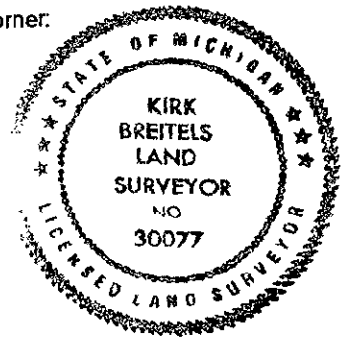
LCRC #3238	NE cor. hse. trailer footing N30°W 118.80'	NE cor. hse. trailer footing N30°W 118.80'
	Nail & Remon. tag P. Pole N30°E 130.03'	Nail & Remon. tag P. Pole N30°E 129.99'
	Nail & Remon. tag P. Pole S55°E 104.30'	Nail & Remon. tag 12" Quad. Tree N40°W 76.54'
	Nail & Remon. tag 8" Tree N40°W 76.66'	Nail & Remon. tag P. Pole S50°E 102.91'

The selected location is accepted by me and is generally accepted by professional surveyors as the best available evidence of the position of the original corner.

C. Description of monument for corner and accessories established to perpetuate locating the position of the corner:

A-3 Standard Kent County Monument

Nail & KC Remon. tag E. side P. Pole	N30°E 129.96'
Nail & KC Remon. tag E. side Quad. 15" Tree	N40°W 76.44'
Nail & KC Remon. tag SW side P. Pole	S50°E 102.95'
Nail & KC Remon. tag E. side Service Pole	N25°W 117.52'
Nail & KC Remon. tag N. side 5" Poplar	S55°W 84.73'



Signed by [Signature]
Surveyor's Michigan License No. 30077

Date 2/25/99