

MAR 11 1999

LIBER 19238PC041

LAND CORNER RECORDATION CERTIFICATE  
Filing Requirement of Act 74, Mich. P.A. 1970

For corners in SECTION

Oakland (County)	Located In:	Corner Code #
1. Public Land Survey	T 4N R 8E	1-5
	T R	
	T R	
	T R	
2. Property Controlling in Section	S T R	
	S T R	
3. Miscellaneous Property in Sec.	S T R	
	S T R	

\$ 9.00 MISCELLANEOUS RECORDING  
 \$ 2.00 REMONUMENTATION  
 4 DEC 98 8:38 A.M. RECEIPT # 48  
 PAID RECORDED - OAKLAND COUNTY  
 G. WILLIAM CADDELL  
 CLERK/REGISTER OF DEEDS

Compliance with  
 ACT 345, P.A. 1990

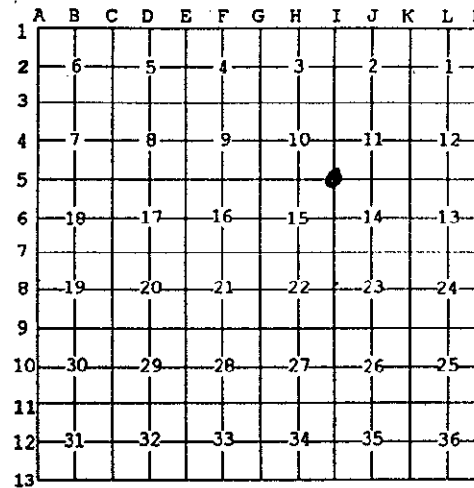
APPROVED ON: 2-09-98 JS  
 OAKLAND COUNTY REMONUMENTATION  
 PEER GROUP COMMITTEE

Register of Deeds Stamp & File Number

4. Lot No. \_\_\_\_\_, Recorded Plat \_\_\_\_\_  
 5. Private Claims \_\_\_\_\_

I, Grant J. Ward, R.L.S., in a field survey on December 1, 19 97 do hereby state that under requirements of P.A. 74, Michigan P.A. of 1970, the corner points mentioned in lines 1 and 2 above were in conformance with regulations and rules therefore as required in the current manual of survey instructions of the United States Department of the Interior, Bureau of Land Management or by a decree of a Court of Law and/or that the corner points mentioned in lines 3, 4 and 5 above were in conformance with the rules of the Michigan Board of Land Surveyors or by a Decree of a Court of Law; established, re-established, monumented, recovered, found as expressed below:

NOTE: Not more than 2 corners, all in the same town and range, may be recorded on this certificate.



A. Description of original monument and accessories and/or subsequent restoration:

I-5 Post, per G.L.O. Notes.

B. Description of corner evidence found and/or method applied in restoring or reestablishing corner:

I-5 Southwest Corner of Section 11, T. 4 N., R. 8 E. Found 1/2" Iron Rod 2' +/- South of Centerline of Davisburg Road

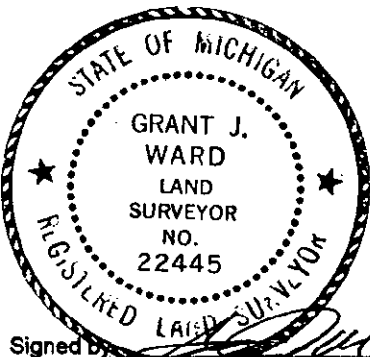
Previously Recorded in L. 11381 P. 064 (2) of Oakland County Records.

(n) Indicates the number of references that confirms this corner by dimensional tie.

This corner location is accepted by the contractor and is generally accepted by professional surveyors as the best available evidence of the position of the original corner.

C. Description of monument for corner and accessories established to perpetuate locating the position of the corner:

- I-5 Set 5/8" Iron Rod & Brass Cap in Monument Box.
- N 10° E 42.46' Set MAG Nail & Remonumentation Disc in Southeast face of 16" Oak Cluster.
- S 60° E 49.35' Set MAG Nail & Remonumentation Disc in Southwest face of 36" Oak.
- S 40° W 36.01' Set MAG Nail & Remonumentation Disc in East face of Utility Pole.
- N 60° W 64.24' Set MAG Nail & Remonumentation Disc in Southwest face of Utility Pole.
- South 33.09' Found 1/2" Iron Rod.
- North 33.03' Found 3/8" Iron Rod.



Signed by \_\_\_\_\_  
 Surveyor's Michigan License No. 22445

Date January 2, 1998

920 FILE  
 200

MAR 11 1999

LIBER 19238PG042

SECTION

Corner Code: I-5

FEBRUARY 1, 1998

DOSSIER FOR: THE SOUTHEAST CORNER OF SECTION 10, SPRINGFIELD TOWNSHIP, T 4 N, R 8 E, OAKLAND COUNTY, MICHIGAN. Prepared under contract with the County of Oakland Under Act 345 of the Public Acts of 1990.

HISTORY:

The boundary of this Township was surveyed by Alex Holmes, D.S. in 1815 and Joseph Wampler, D.S. set the Corners for the subdivision of it in 1823.

SPECIAL NOTES:

This Corner has been accepted and used since before 1962 as witnessed by the Road Commission for Oakland County at that time. It was recorded under Act 74 of the Public Acts of 1970 in Liber 11381, Page 64, by myself, Surveyor in 1990.

COLLATERAL EVIDENCE:

This Corner lies 2 feet South of the Centerline of Davisburg Road on line with a fence line and tree row to the South. There are two fences running West from the Corner one 32 feet North and one 33 feet South of the Corner. There is an iron rod 33.03 feet North of the Corner and one 33.09 feet South of the Corner.

We searched at least 50 feet in each direction for other stakes and found none that might represent the Corner.

The measured dimensions to the South 1/4 Corner and the East 1/4 Corner of Section 10 and the North 1/4 Corner and the West 1/4 Corner of Section 14 agree with the recorded distances within 0.4 feet, 0.5 feet, 1.4 feet and 2.1 feet respectively.

SURVEYOR'S RECOMMENDATIONS:

The selected location is accepted by the Contractor and is generally accepted by Professional Surveyors as the best available evidence of the position of the original Corner. Therefore, I recommend that the Peer Review Group accept this Corner as monumented, with the references as shown on the enclosed form prepared according to Act 74 of the Public Acts of 1970.

---

Grant J. Ward, R.L.S.  
License No. 22445

19238PG042