

RECEIVED
 1994 SEP 20 PM 2:21
 REGIONAL RECORDS
 ST. CLAIR COUNTY

ST. CLAIR COUNTY, MICHIGAN
 OFFICIAL GOVERNMENT CORNER



LAND CORNER RECORDATION CERTIFICATE
 Filing Requirement of Act 74, Mich. P.A. 1970

| | | |
|---------------------------------------|--------------------------|---------------|
| | Located In: | Corner Code # |
| 1. Public Land Survey | T <u>7N</u> R <u>14E</u> | <u>L-13</u> |
| | T _____ R _____ | _____ |
| | T _____ R _____ | _____ |
| | T _____ R _____ | _____ |
| 2. Property Controlling in Section | S _____ T _____ R _____ | <u>Seg-1</u> |
| | S _____ T _____ R _____ | _____ |
| 3. Miscellaneous Property in Sec. | S _____ T _____ R _____ | _____ |
| | S _____ T _____ R _____ | _____ |
| 4. Lot No. _____, Recorded Plat _____ | | |
| 5. Private Claims _____ | | |

Register of Deeds Stamp & File Number

Michael J. Rossow May 9, 1994

I, _____, in a field survey on _____, 19____, do hereby certify that under requirements of P.A. 74, Michigan P.A. of 1970, the corner points mentioned in lines 1 and 2 above were in conformance with regulations and rules therefore as required in the current manual of survey instructions of the United States Department of the Interior, Bureau of Land Management or by a decree of a Court of Law and/or that the corner points mentioned in lines 3, 4 and 5 above were in conformance with the rules of the Michigan Board of Land Surveyors or by a Decree of a Court of Law; established, re-established, monumented, re-monumented, recovered, found as expressed below:

NOTE: Not more than 1 corner, may be recorded on this certificate.

A. Description of original monument and accessories and/or subsequent restoration:

20" White Oak identified for original corner (Gov't. Survey)
 St. Clair Co. Surveyors Record Lists nothing for this corner.
 No Act 74 Cert. recorder for this corner.

B. Description of corner evidence found and/or method applied in restoring or reestablishing corner:

Found Iron Rod with R.L.S. #5557 set by R.L.S.# 24601 on 08-10-79.

C. Description of monument for corner and accessories established to perpetuate locating the position of the corner:

Iron Rod R.L.S. #5557.
 9.78' ESE to set P.K. and County Tag in 12" Apple (F.Dup.Sp.Below)
 24.70' S to set P.K. and County Tag in 15" Apple (F.Dup.Sp.Below)
 18.3' W to set P.K. and County Tag in 15" Apple (F.Dup.Sp.Below)
 25.85' N to set P.K. and County Tag in 15" Oak
 F. CCM #15405 ENE 1.3'

SEE ATTACHED SKETCH FOR ADDITIONAL INFORMATION.

Signed by Michael J. Rossow
 Surveyor's Michigan License No. 24615

Date May 13, 1994
 PA 345-1990
 PEER COMMITTEE
 APPROVED 5-20-94

| | | | | | | | | | | | | | |
|----|----|----|----|----|----|----|---|---|---|---|---|---|---|
| | A | B | C | D | E | F | G | H | I | J | K | L | M |
| 2 | 6 | 5 | 4 | 3 | 2 | 1 | | | | | | | |
| 3 | | | | | | | | | | | | | |
| 4 | 7 | 8 | 9 | 10 | 11 | 12 | | | | | | | |
| 5 | | | | | | | | | | | | | |
| 6 | 18 | 17 | 16 | 15 | 14 | 13 | | | | | | | |
| 7 | | | | | | | | | | | | | |
| 8 | 19 | 20 | 21 | 22 | 23 | 24 | | | | | | | |
| 9 | | | | | | | | | | | | | |
| 10 | 30 | 29 | 28 | 27 | 26 | 25 | | | | | | | |
| 11 | | | | | | | | | | | | | |
| 12 | 31 | 32 | 33 | 34 | 35 | 36 | | | | | | | |
| 13 | | | | | | | | | | | | | |

STATE PLAIN COORDINATES

N. _____

E. _____

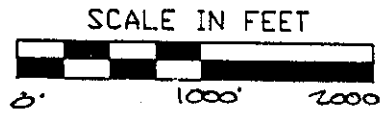
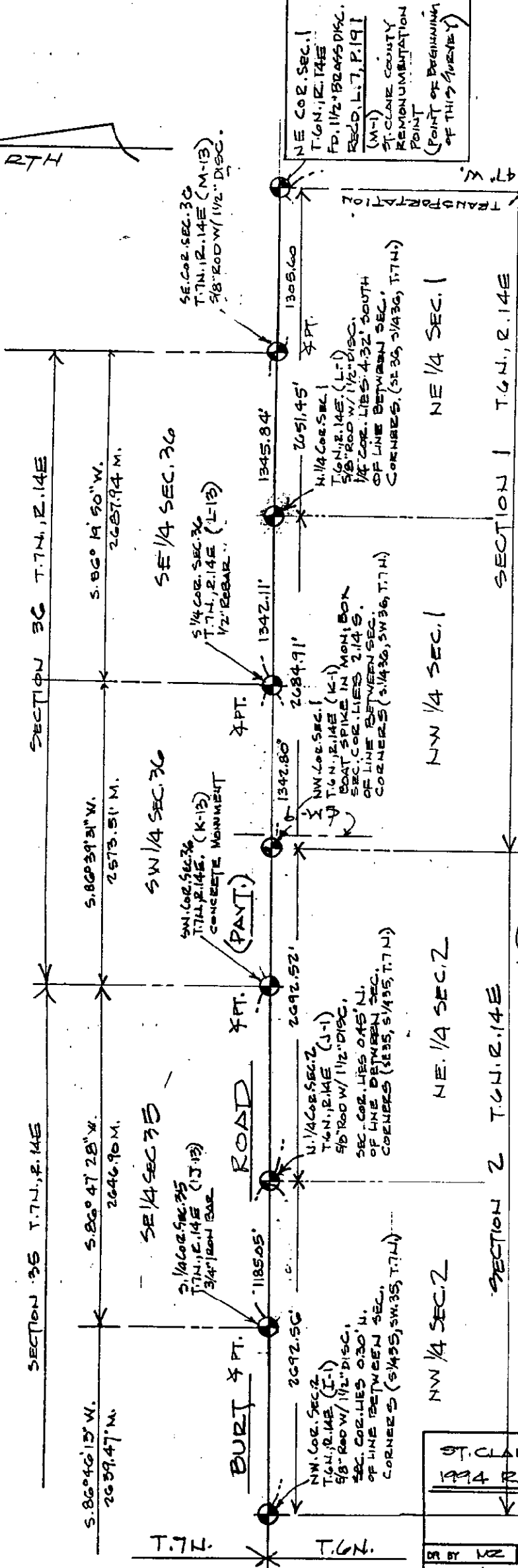
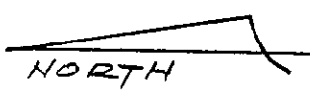
ELEVATION _____



APPROVED AS AN OFFICIAL GOVERNMENT CORNER BY ST. CLAIR COUNTY:

Signed By: _____ : _____
 St. Clair County Land Surveyor Date

Surveyor's Michigan License No. _____



LEGEND

- SET IRON
- FOUND IRON
- R RECORDED
- M MEASURED
- C CALCULATED
- x—x— FENCE
- GOVT. CORNER

ST. CLAIR COUNTY, MICHIGAN
1994 REMONUMENTATION PROGRAM

| | | | |
|-----------------------|-----------------|----------------------|--------|
| DR BY MZ | CK BY MZ | SHEET NO 2 OF | SHEETS |
| SCALE 1"=1000' | | DATE 4-26-94 | |

T.R. VALENTINE & ASSOCIATES INC.
Consulting Engineers, Architects & Land Surveyors
901 Huron Ave., Suite 8
Port Huron Michigan 48050
(313) 985-4848

NOTE: ALL DISTANCES & ANGLES
MEASURED ELECTRONICALLY