

OCT 20 1994

COMMISSION

1994 REMONUMENTATION PROGRAM
LAND CORNER RECORDATION CERTIFICATE
Filing Requirement of Act 74, Mich. P.A. 1970

For corners in WATERTOWN TOWNSHIP

RECEIVED FOR RECORD
LIBER NO. _____ PAGE NO. _____
FILING NO. # 53
WATERTOWN TWP
94 OCT -4 AM 10:34
VIRGINIA M. HOLLAND
TUSCOLA COUNTY
REGISTER OF DEEDS

Register of Deeds Stamp & File Number

TUSCOLA (County)	Located In:	Corner Code-#
1. Public Land Survey	T10N R9E	J-13
	T _____ R _____	_____
	T _____ R _____	_____
	T _____ R _____	_____
2. Property Controlling in Section	S _____ T _____ R _____	_____
	S _____ T _____ R _____	_____
3. Miscellaneous Property in Sec.	S _____ T _____ R _____	_____
	S _____ T _____ R _____	_____

- 4. Lot No. _____, Recorded Plat _____
- 5. Private Claims _____

	A	B	C	D	E	F	G	H	I	J	K	L	M
2	6	5	4	3	2	1							
3													
4	7	8	9	10	11	12							
5													
6	18	17	16	15	14	13							
7													
8	19	20	21	22	23	24							
9													
10	30	29	28	27	26	25							
11													
12	31	32	33	34	35	36							
13													

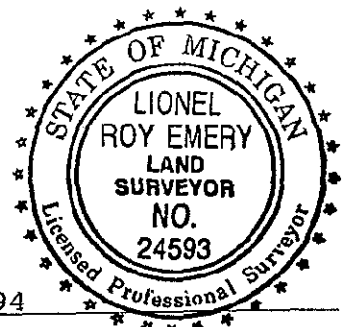
I, Lionel Roy Emery in a field survey on May 18, 1994, do hereby certify that under requirements of P.A. 74, Michigan P.A. of 1970, the corner points mentioned in lines 1 and 2 above were in conformance with regulations and rules therefore as required in the current manual of survey instructions of the United States Department of the Interior, Bureau of Land Management or by a decree of a Court of Law and/or that the corner points mentioned in lines 3, 4 and 5 above were in conformance with the rules of the Michigan Board of Land Surveyors or by a Decree of a Court of Law; established, re-established, monumented, re-monumented, recovered, found as expressed below:

NOTE: Not more than 4 corners, all in the same town and range, may be recorded on this certificate.

- A. Description of original monument and accessories and/or subsequent restoration:
- 1834 (Gov't. Land Office Notes) Harvey Parke, D.S. -set quarter sec. post- B. Ash 14 N78E 30; Maple 24 N19W 15
 - 1971 (Survey -Liber 1, page 138) Robert Kay, P.S. 14096 - 3/8" iron-(no indication whether found or set)- North, 26.5' 48" Maple; N30°E, 36.7' 18" Stump; N60°E, 52.2'- 20" Stump
 - 1973 (Survey by Rowe Engineering, Inc.) David Rowe, P.S. 11192 - 3/8" re-rod- North, 26.72'-tag 11192 in 48" Maple; N60°E, 37.18' -11192 tag in stump; S03°E, 130.73'-face of stump
 - 1984 (Survey -Liber 541, page 1468) Harold Elrich, P.S. 18986 -set 1/2" iron using existing ties- N80°W, 87.98' -spike in Tele. Pole; S80°W, 85.24'-spike in Tele. Pole; North 26.72' tag in 48" Maple; S03°E, 130.76'-tag in Pwr. Pole

- B. Description of corner evidence found and/or method applied in restoring or reestablishing corner:
- Found 1/2" re-rod and accessories
 - Did not accept 1/2" re-rod as marking original corner
 - Corner position established by single proportion measure.

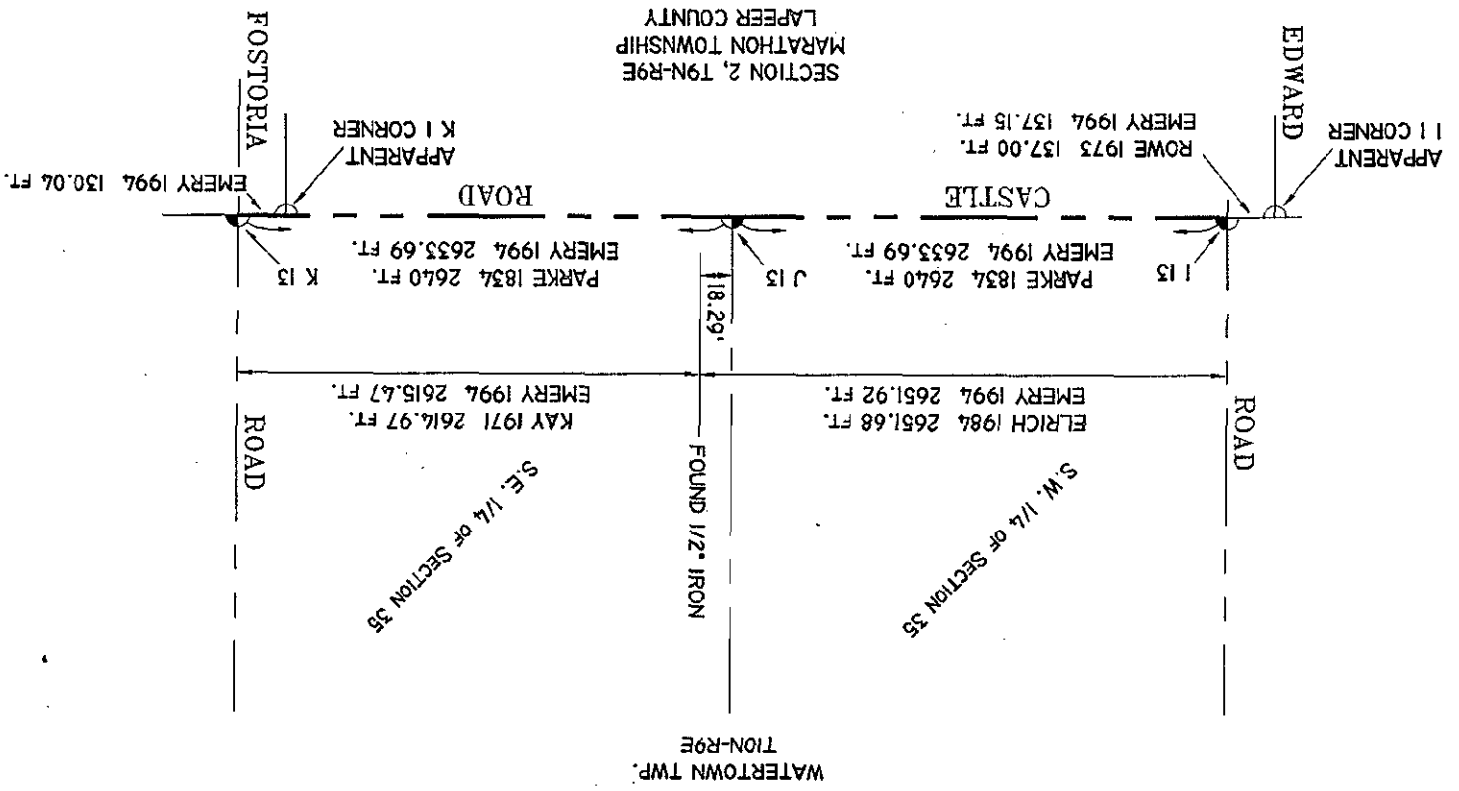
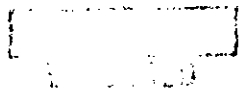
- C. Description of monument for corner and accessories established to perpetuate locating the position of the corner:
- Set Standard Tuscola County Concrete Monument w/ 2" Brass Cap stamped J13 T10N R9E
 - N25°E, 34.07'-T.C. Re-mon. tag in West root of 60" Maple
 - N50°E, 67.30'-T.C. Re-mon. tag in SE face of 10" Poplar
 - S64°W, 67.93'-T.C. Re-mon. tag in SE face Tele. Ped'l. Support pole
 - N08°W, 80.45'-T.C. Re-mon. tag in East face 20" Ash



Signed by Lionel Roy Emery
Surveyor's Michigan License No. 24593

Date October 4, 1994

APPROVED
7-11-94



NO SCALE

