

LAND CORNER RECORDATION CERTIFICATE

Filing Requirement of Act 74, Mich. PA 1970

For Corners In:			
Alpena	Located In	Corner Code #	
(County)			
1. Public Land Survey	T 29N R 8E	E-2	
	T 29N R 8E	E-3	
2. Property Controlling in Section	S T R		
	S T R		
3. Miscellaneous Property in Section	S T R		
	S T R		

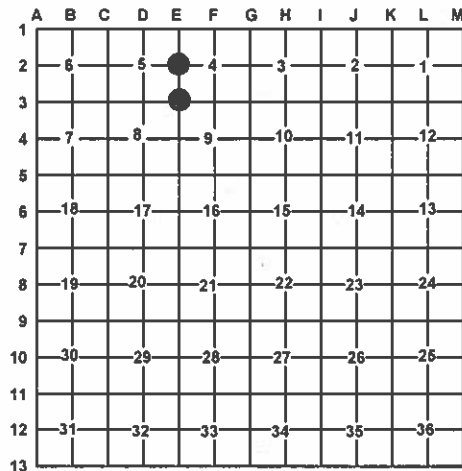
4. Lot No: _____ Recorded Plat: _____

5. Private Claims: _____

I, Carl T. Kiiskila, in a field survey on October 25, 2010 do hereby state that under requirements of PA 74, Michigan PA of 1970, the corner points mentioned in lines 1 and 2 above were in conformance with regulations and rules therefore as required in the current manual of survey instructions of the United States Department of the Interior, Bureau of Land Management or by a decree of a Court of Law and/or that the corner points mentioned in lines 3, 4 and 5 above were in conformance with the rules of the Michigan Board of Land Surveyors or by a Decree of a Court of Law; established, re-established, monumented, recovered, found as expressed below:

NOTE: Not more than 2 corners, all in the same town and range, may be recorded on this certificate.

Register of Deeds Stamp & File Number



A. Description of original monument and accessories and/or subsequent restoration:

E-2 – West ¼ Corner Section 4, T29N,R8E

- 1839 – GLO – Lewis Claison – Set qr. sec. post.
W. Birch 9" S70°E 15 Links
W. Birch 7" N59°W 23 Links
- 1907 – County survey records Jos. W. McNeil survey for residents in section 5. Did not find corner took measurements to two streams which crosses line to North. No witnesses given
- 1975 – Larry Beauregard P.S. #18654 Certificate of Survey set ½" bar. S60°W 6" Cedar 25.45'
N85°W 6" Cedar 20.6'
N30°E 6" Ash 17.3'
- 2006 – Wayne T. Lewis P.S. #41922 unrecorded Certificate of Survey set ½" Rerod W/Cap
S85°W 19.41' 15" White Birch
N70°W 23.10' 8" Birch
North 28.00' 8" Ash
East 5.00' Fence Post
N07°W 18.91' ½" Rerod

B. Description of corner evidence found and/or method applies in restoring or re-establishing corner:

E-2 – West ¼ Corner Section 4, T29N,R8E

Accepted ½" Rerod W/Cap as set by W. T. Lewis. This position fits Jos. W. McNeil 1907 survey in section 5 well. Drove 1"x36" galvanized pipe with Standard DNR Cap over found ½" rerod.

C. Description of monument for corner and accessories established to perpetuate locating the position of the corner:

E-2 – West ¼ Corner Section 4, T29N,R8E

Set a 1"x36" galvanized pipe with Standard DNR Cap

Witnesses:

- N45°E 20.89' to set N&T on NW side 8" W. Pine
- S50°E 32.27' to set N&T on SW side 4" Balsam Fir
- S44°W 16.78' to set N&T on SE side 9" Cedar
- N63°W 32.92' to set N&T on NE side 10" Cedar
- N06°W 18.13' to fd ½" bar by L. Beauregard
- N83°E 4.81' to set fd N&T #41922 N side Fence Post
- Set Blue Carsonite Post 10' West

Signed by:

Carl T. Kiiskila

Surveyor's Michigan License No.:

33981

E-3 – Sec. Cor. comm. to sec.'s 4,5,8&9, T29N,R8E

- 1839 – GLO – Lewis Claison – Set post corner secs.4,5,8&9
Aspen 16" N30°E 36 Links
Aspen 20" S59½°W 12 Links
- 1910 – County survey records Jos. W. McNeil survey for Mr. Johnson in section 4. Tied to corner previously set by him from work in section 8 and 9.
- 1973 – L.C.R.C. L. 1,P. 23 D. Marlatt P.S.#18660 set ½" rerod 16' West of ctr. line distance agrees Jos. W. McNeil distance for bottom of section 5.
S85°E 50.34' 18" Poplar
N75°E 67.4' 6" Oak
N40°E 111.84' 13" Maple

E-3 – Sec. Cor. comm. to sec.'s 4,5,8&9, T29N,R8E

Found ½" bar 13' West of center road fitting one of D. Marlatt's remaining witnesses. Drove 1"x36" galvanized pipe with Standard DNR Cap over found ½" rerod.

E-3 – Sec. Cor. comm. to sec.'s 4,5,8&9, T29N,R8E

Set a 1"x36" galvanized pipe with Standard DNR Cap

Witnesses:

- N31°E 124.89' to set N&T on SE side 11" Oak
- *N33°E 111.78' to set N&T on SE side 28" S. Maple
- S58°E 61.25' to fd N&T on SW side Power Pole
- N87°W 28.93' to set N&T on N side 9" Oak
- N33°W 50.83' to set N&T on NE side 10" R. Pine
- Set Blue Carsonite Post 1' North

* Previous witness of record.

Date:

2/9/11

