

LAND CORNER RECORDATION CERTIFICATE

Filing Requirement of Act 74, Mich. PA 1970

For Corners In:

Benzie
(County)

Located In

Corner Code #

1. Public Land Survey	T	R		
	T	R		
2. Property Controlling in Section	S 27	T 26N	R 13W	3, 4
	S	T	R	
3. Miscellaneous Property in Section	S	T	R	
	S	T	R	

4. Lot No: _____ Recorded Plat: _____

5. Private Claims: _____

I, Joshua R. Davidson, in a field survey on August 13, 2014 do hereby state that under requirements of PA 74, Michigan PA of 1970, the corner points mentioned in lines 1 and 2 above were in conformance with regulations and rules therefore as required in the current manual of survey instructions of the United States Department of the Interior, Bureau of Land Management or by a decree of a Court of Law and/or that the corner points mentioned in lines 3, 4 and 5 above were in conformance with the rules of the Michigan Board of Land Surveyors or by a Decree of a Court of Law; established, re-established, monumented, recovered, found as expressed below:

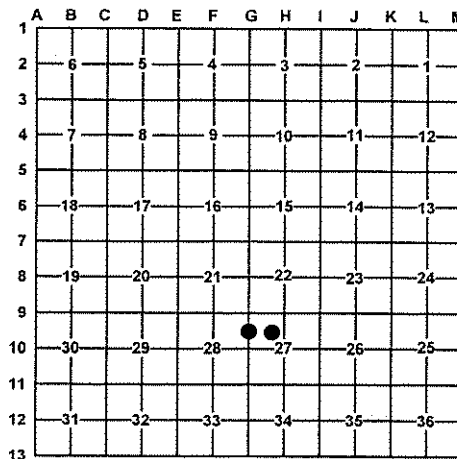
NOTE: Not more than 2 corners, all in the same town and range, may be recorded on this certificate.

2016L-00030

STATE OF MICHIGAN
BENZIE COUNTY
RECORDED
01/27/2016 12:46:24PM
REC FEE: \$14.00
PAGE 1 OF 1
57231

AMY J BISSELL
REGISTER OF DEEDS

Register of Deeds Stamp & File Number



A. Description of original monument and accessories and/or subsequent restoration:

3 – N 1/16 corner common to sections 27 & 28

4 – NW 1/16 corner section 27

1981 – LCRC L. 1, P. 140 – Carl F. Roser, PS #12028
– Estab. N 1/8 Cor. on W. line of Sec. 27 equidistant & on line between Sec. Cor. to N. & 1/4 cor. to So. Corner falls about mid-way between old 50' N-S R.O.W. fences. Set 5/8" rerod w/ RLS cap & added Ced. post w/loc tag. – 8" Maple S62°W 19.3'; 8" Maple N70°E 39.8'; 8" Maple S31°W 16.7'; Ctr. N-S dirt tr. rd. E. 10'.

– None.

RECEIVED
BENZIE COUNTY
REGISTER OF DEEDS

2016 JAN 27 PM 12 41



B. Description of corner evidence found and/or method applied in restoring or re-establishing corner:

3 – N 1/16 corner common to sections 27 & 28

4 – NW 1/16 corner section 27

Found and accepted a 5/8" rebar & broken cap #12028 as set by Roser. Found 1981 accessories fitting position. Replaced broken cap with a stamped 2" aluminum cap.

Set a stamped 2" aluminum cap on 5/8" X 3/4" rebar per BLM standard procedures.

C. Description of monument for corner and accessories established to perpetuate locating the position of the corner:

3 – A stamped 2" aluminum cap on 5/8" rebar – Cedar post 0.6' NE.

4 – A stamped 2" aluminum cap on 5/8" rebar.

N70°E 40.21' to set nail & tag in S. side 12" Sugar Maple
S48°E 27.50' to set nail & tag in NE. side 12" Oak
S32°W 16.79' to set nail & tag in NW. side 13" Sugar Maple
N64°W 19.47' to set nail & tag in SW. side 10" Sugar Maple

N04°E 7.66' to set nail & tag in W. side 9" Oak
S52°E 31.94' to set nail & tag in NE. side 17" Red Maple
S16°W 48.02' to set nail & tag in W. side 4" Red Maple
N85°W 16.10' to set nail & tag in S. side 16" Oak
Set blue post with location tag 1' Southwest

Signed by:

Joshua R. Davidson

Date:

1-27-2016

Surveyor's Michigan License No.:

46659