

APPROVED 11-12-96
CALHOUN COUNTY
REMONUMENTATION.

CALHOUN COUNTY REMONUMENTATION
LAND CORNER RECORDATION CERTIFICATE
Filing Requirement of Act 74, Mich. P.A. 1970

STATE OF MICHIGAN
CALHOUN COUNTY
RECORDED

19 NOV 96 1:57 P.M.

ANNE B. NORLANDER
CLERK - REGISTER OF DEEDS

LIBER 1899 PAGE 607

Register of Deeds Stamp & File Number

For corners in
Calhoun

(County)

Clarence Twp.

Located In:

Corner Code #

1. Public Land Survey

T 1S R 4W

K-3

T R

T R

T R

2. Property Controlling
in Section

S T R

S T R

3. Miscellaneous

S T R

Property in Sec.

S T R

4. Lot No. , Recorded Plat

5. Private Claims

Donald J. Davis, in a field survey on October 16, 1996

do hereby certify that under requirements of P.A. 74, Michigan P.A. of 1970, the corner points mentioned in lines 1 and 2 above were in conformance with regulations and rules therefore as required in the current manual of survey instructions of the United States Department of the Interior, Bureau of Land Management or by a decree of a Court of Law and/or that the corner points mentioned in lines 3, 4 and 5 above were in conformance with the rules of the Michigan Board of Land Surveyors or by a Decree of a Court of Law; established, re-established, monumented, re-monumented, recovered, found as expressed below:

NOTE: Not more than 4 corners, all in the same town and range, may be recorded on this certificate.

A. Description of original monument and accessories and/or subsequent restoration:

Original survey in 1825 by Sibley.

Resurvey in 1889 by Gifford, found stone and set tile.

Corner found and used by Consumers Power Co. in 1967.

14" Hickory N 80° E 42.6' 1-1/8" iron.

16" Oak N 60° E 11.00'

B. Description of corner evidence found and/or method applied in restoring or reestablishing corner:

Found 1-1/8" iron at fence corner.

Dug and found clay tile 1 foot under ground.

Accepted as good perpetuation of original corner.

C. Description of monument for corner and accessories established to perpetuate locating the position of the corner:

Set Berntsen monument with stones around.

On East side of fence corner.

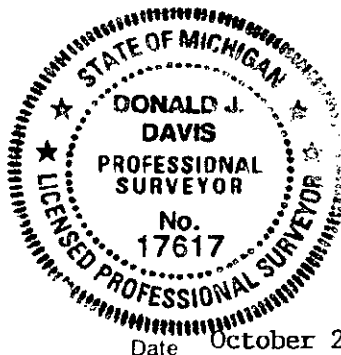
Nail & Tag 16" Hickory N 80° E 42.6'

Nail & Tag 16" Swamp Oak N 60° E 12.50'

Nail & Tag 10" Oak North 34.00'

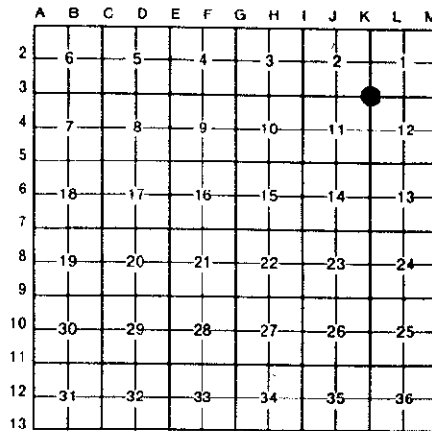
Nail & Tag R.Oak N 50° W 27.28'

Fences East-West-South.



Signed by Donald J. Davis
Surveyor's Michigan License No. 17617

Date October 25, 1996



Clarence Twp

SURVEY &
REMONUMENTATION

MAR 21 1997

COMMISSION