

APPROVED

Date 4-20-94
CALHOUN COUNTY
REMONUMENTATION.

CALHOUN COUNTY REMONUMENTATION
LAND CORNER RECORDATION CERTIFICATE
Filing Requirement of Act 74, Mich. P.A. 1970

For corners in

Calhoun (County)	Located In:	Corner Code #
1. Public Land Survey	T _____ R _____	_____
	T _____ R _____	_____
	T _____ R _____	_____
	T _____ R _____	_____
2. Property Controlling in Section	S _____ T _____ R _____	_____
	S _____ T _____ R _____	_____
3. Miscellaneous Property in Sec.	S _____ T _____ R _____	_____
	S 35 T 2 S R 8 W	_____
4. Lot No. _____, Recorded Plat _____		
5. Private Claims _____		

CLERK-REGISTER
CALHOUN COUNTY, MICH.
ANNE B. NORLANDER
MAR 17 9 57 AM '94

RECORDED

Register of Deeds Stamp & File Number

#2 "other"

	A	B	C	D	E	F	G	H	I	J	K	L	M
2	6		5		4		3		2		1		
3													
4	7		8		9		10		11		12		
5													
6	18		17		16		15		14		13		
7													
8	19		20		21		22		23		24		
9													
10	30		29		28		27		26		25		
11													
12	31		32		33		34		35		36		
13													

I, William K. Crane, in a field survey on March 10, 19 94, do hereby certify that under requirements of P.A. 74, Michigan P.A. of 1970, the corner points mentioned in lines 1 and 2 above were in conformance with regulations and rules therefore as required in the current manual of survey instructions of the United States Department of the Interior, Bureau of Land Management or by a decree of a Court of Law and/or that the corner points mentioned in lines 3, 4 and 5 above were in conformance with the rules of the Michigan Board of Land Surveyors or by a Decree of a Court of Law; established, re-established, monumented, re-monumented, recovered, found as expressed below:

NOTE: Not more than 4 corners, all in the same town and range, may be recorded on this certificate.

A. Description of original monument and accessories and/or subsequent restoration:

South $\frac{1}{4}$ Corner Section 35, Town 2 South, Range 8 West, falls in Paul Lake and was not set in the original government survey. Reference Monument set on the North and South $\frac{1}{4}$ line on the North side of Paul Lake.

B. Description of corner evidence found and/or method applied in restoring or reestablishing corner:

The North and South $\frac{1}{4}$ line as herein monumented, on a mean bearing of the East Section line and West Section line falls 17.21 feet West of the North and South $\frac{1}{4}$ line per the recorded plats of Pioneer Acres #2 and the Supervisor's Plat of Beckley Acres at the Township Line. The Reference Monument was placed on the North and South $\frac{1}{4}$ line of Section 35 as determined by a mean bearing from the Northeast corner to the Southeast corner and from the Northwest corner to the Southwest corner. Reference Monument is 606.96 feet North of the $\frac{1}{4}$ corner.

SURVEY &
REMONUMENTATION

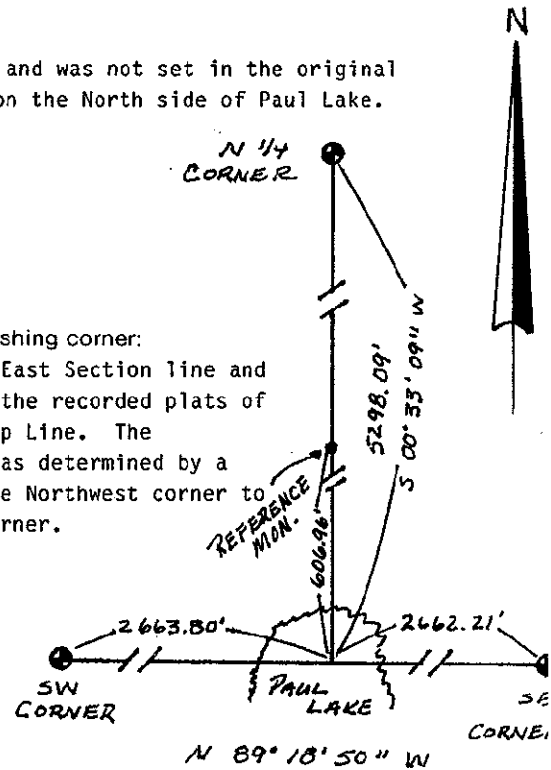
OCT 27 1994

COMMISSION

C. Description of monument for corner and accessories established to perpetuate locating the position of the corner:

Set Reference Monument: Standard Calhoun County Remonumentation Monument (Bernsten Monument)

North & South Fence	East	0.4'
RR tie fence post	North	2.92'
3/8" rerod	N 11° E	55.75'
54" Willow	N 80° W	18.76'
8" Cedar	N 30° W	25.30'
South $\frac{1}{4}$ Corner	South	606.96'
(Mathematical Location)		



Signed by William K Crane

Date 3/16/94

Surveyor's Michigan License No. 29243