

LAND CORNER RECORDATION CERTIFICATE

Filing Requirement of Act 74, Mich. PA 1970

For Corners In:
Crawford
 (County)

Located In _____ Corner Code # _____

- | | | | | | |
|--------------------------------------|---|------------|---|-----------|-------|
| 1. Public Land Survey | T | <u>26N</u> | R | <u>4W</u> | H-3 |
| | T | <u>26N</u> | R | <u>4W</u> | H-4 |
| 2. Property Controlling in Section | S | _____ | T | _____ | _____ |
| | S | _____ | T | _____ | _____ |
| 3. Miscellaneous Property in Section | S | _____ | T | _____ | _____ |
| | S | _____ | T | _____ | _____ |

4. Lot No: _____ Recorded Plat: _____

5. Private Claims: _____

I, Carl T. Kiiskila, in a field survey on January 19, 2001 do hereby state that under requirements of PA 74, Michigan PA of 1970, the corner points mentioned in lines 1 and 2 above were in conformance with regulations and rules therefore as required in the current manual of survey instructions of the United States Department of the Interior, Bureau of Land Management or by a decree of a Court of Law and/or that the corner points mentioned in lines 3, 4 and 5 above were in conformance with the rules of the Michigan Board of Land Surveyors or by a Decree of a Court of Law; established, re-established, monumented, recovered, found as expressed below:

NOTE: Not more than 2 corners, all in the same town and range, may be recorded on this certificate.

A. Description of original monument and accessories and/or subsequent restoration:

H-3 G.L.O. Addison P. Brewer D.S. June 1852
 Set quarter section post
 Wit: Yellow Pine 15 N02°E 12 links
 White Pine 24 S30.5°W 30 links

Michigan Department of Conservation land corner record form, May 1956. Shows a concrete filled tile at corner placed a 1" Pipe with 4" brass cap from both original B.T. stumps in place.
 Wit: 12" B. Oak N77°W 39.5 links, 6" R. Pine S60°E 51 links.

B. Description of corner evidence found and/or method applies in restoring or re-establishing corner:

H-3 Found DNR monument and concrete filled tile with 1/2" rod fitting G. Hennings distance South reasonable well.

H-4 This corner position was not established during the original government corner.

C. Eugene Ostling R.L.S. #12026 Certificate of Survey September 7, 1965 shows center of section concrete monument.

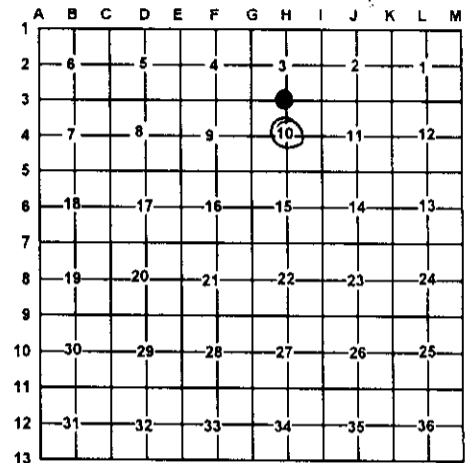
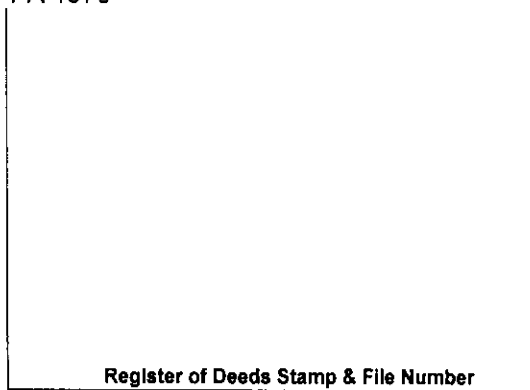
George D. Henning R.L.S. #2240 Certificate of Survey August 17, 1971 shows conc. monument center of section 10.

C. Description of monument for corner and accessories established to perpetuate locating the position of the corner:

H-3 D.N.R. Monument
 Wit: 12" Oak S23°E 25.25'
 12" Maple S69°E 16.89'
 *5" Maple N25°W 16.27'
 14" Maple West 32.83'
 18" Pine stump O.B.T. N10°E 8.15'
 Carsonite Post North 1'±

H-4 Found Concrete filled monument
 Wit: 4" Spruce S38°W 12.34'
 8" Hemlock N70°E 10.26'
 4" Hemlock N34°E 19.63'
 *14" Maple N34°W 14.03'
 Carsonite post North 1'±

*Old witnesses by others



Signed by: Carl T. Kiiskila
 Surveyor's Michigan License No.: 33981

Date: 4-8-02