

LAND CORNER RECORDATION CERTIFICATE
Filing Requirement of Act 74, Mich. PA 1970

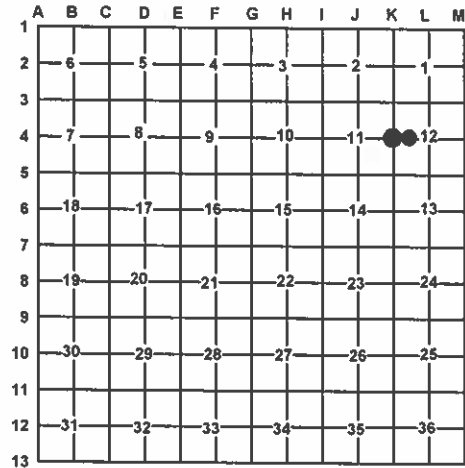
For Corners In:
Crawford
(County)
Located In
Corner Code #

1. Public Land Survey T 26N R 2W K-4
2. Property Controlling in Section S 12 T 26N R 2W 8
3. Miscellaneous Property in Section S T R
S T R

4. Lot No: Recorded Plat:
5. Private Claims:

I, Carl T. Kiiskila, in a field survey on October 10, 2005 do hereby state that under requirements of PA 74, Michigan PA of 1970, the corner points mentioned in lines 1 and 2 above were in conformance with regulations and rules therefore as required in the current manual of survey instructions of the United States Department of the Interior, Bureau of Land Management or by a decree of a Court of Law and/or that the corner points mentioned in lines 3, 4 and 5 above were in conformance with the rules of the Michigan Board of Land Surveyors or by a Decree of a Court of Law; established, re-established, monumented, recovered, found as expressed below:

NOTE: Not more than 2 corners, all in the same town and range, may be recorded on this certificate.



A. Description of original monument and accessories and/or subsequent restoration:

K-4 G.L.O. Darwin Pettibone 1852 Set quarter section post Wit: Poplar 13" N58°E 9 1/2 links W. Pine 8" S50°W 9 1/2 links
8- Glenn A. Fauser R.L.S. #18657 set a 1/2" bar with R.L.S. Cap for corner

June 1945 George Henning R.L.S. #2240 established a position for this corner 2638' North of the Southwest corner of section 12. Type of Monument and witnesses not given.

Liber 224, Page 565 (1978 survey) Glenn A. Fauser R.L.S. #18657 found a 3/8" bar for corner

Wit: Property iron West 27.99'
10" R. Pine N65°W 41.90'
10" R. Pine N86°E 43.53'
14" R. Pine S68°E 42.63'
3.6' West of Centerline of Road
.7' below surface.

B. Description of corner evidence found and/or method applies in restoring or re-establishing corner:

K-4 Found 1/2" iron bar fitting George Henning distance South and Glenn A. Fauser's witnesses
8- Found and accepted a 1/2" iron with R.L.S. cap #18657 (Glenn A. Fauser) fitting B.L.M. instructions for subdivision of a section.

C. Description of monument for corner and accessories established to perpetuate locating the position of the corner:

K-4 Found 1/2" iron bar added P.S. cap #33981 Wit: 20" R. Pine N50°E 69.08' 16" R. Pine N63°W 41.98' 16" R. Pine S66°E 42.73' 9" Maple S53°W 42.52' Blue Carsonite Post East 33'±
8- Found 1/2" iron with P.S. cap #18657 Wit: 18" R. Pine N57°W 26.48' 16" R. Pine S69°W 34.20' 16" R. Pine S11°W 26.65' 12" R. Pine S89°E 37.95' Blue Carsonite Post North 10'±

Signed by: Carl T. Kiiskila
Surveyor's Michigan License No.: 33981

Date: 11/28/05

