

LAND CORNER RECORDATION CERTIFICATE
Filing Requirement of Act 74, Mich. PA 1970

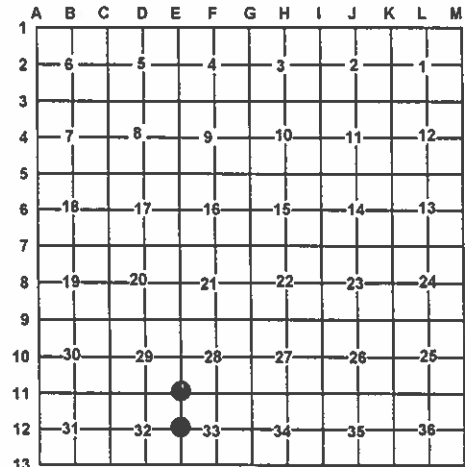
For Corners In:
Crawford
(County)
Located In
Corner Code #

- 1. Public Land Survey
T 27N R 3W E-11
T 27N R 3W E12
- 2. Property Controlling in Section
S T R
S T R
- 3. Miscellaneous Property in Section
S T R
S T R

4. Lot No: Recorded Plat:
5. Private Claims:

I, Carl T. Kiiskila, in a field survey on November 20, 2006 do hereby state that under requirements of PA 74, Michigan PA of 1970, the corner points mentioned in lines 1 and 2 above were in conformance with regulations and rules therefore as required in the current manual of survey instructions of the United States Department of the Interior, Bureau of Land Management or by a decree of a Court of Law and/or that the corner points mentioned in lines 3, 4 and 5 above were in conformance with the rules of the Michigan Board of Land Surveyors or by a Decree of a Court of Law; established, re-established, monumented, recovered, found as expressed below:

NOTE: Not more than 2 corners, all in the same town and range, may be recorded on this certificate.



A. Description of original monument and accessories and/or subsequent restoration:

- E-11 G.L.O. Addison Brewer 1859 S. Pine 7" for corner of sections 28, 29, 32 and 33.
Wit: S. Pine 8 N80°W 9 links
S. Pine 8 S89°E 21 links
- E-12 G.L.O. Addison Brewer 1859 Set quarter section post
Wit: S. Pine 8 N25°E 20 links
S. Pine 8 S32°W 8 links
- 1975 Liber 156, Page 37 Norman Parker R.L.S. #16939 shows 1 1/2" pipe for corner.
Wit: Face Of P. Pole N56°W 65.45'
N.B.T. 16" Oak S19°E 37.90'
N.B.T. 10" J. Pine N45°E 59.70'
- 1975 Liber 156, Page 37 Norman Parker R.L.S. #16939 shows 1 1/2" pipe for corner.
Wit: N.B.T. 6" J. Pine N50°W 82.8'
N.B.T. 6" J. Pine S50°W 84.3'

B. Description of corner evidence found and/or method applies in restoring or re-establishing corner:

- E-11 Found 1/2" iron bar at road surface fitting N. Parker's survey in section 32.
- E-12 Found 1/2" iron bar 0.1' below surface fitting N. Parker's survey in section 32.

C. Description of monument for corner and accessories established to perpetuate locating the position of the corner:

- E-11 Found 1/2" iron bar
Wit: 12" J. Pine N46°E 59.99'
P. Pole N55°W 65.80'
5" Oak S46°W 81.02'
P. Pole S42°E 47.00'
- E-12 Found 1/2" iron bar
Wit: P. Pole N60°E 36.99'
P. Pole N51°W 39.38'
P. Pole S43°W 50.79'
P. Pole S25°E 136.64'

Signed by: Carl T. Kiiskila
Surveyor's Michigan License No.: 33981

Date: 8-10-09

