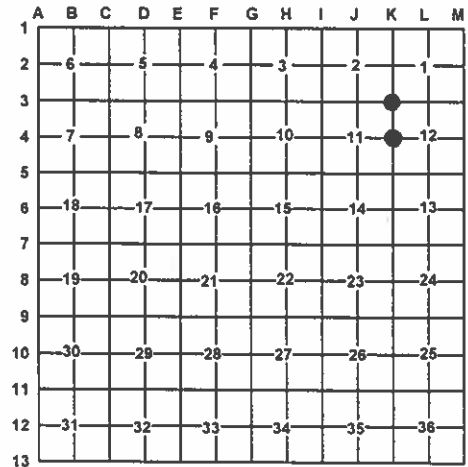


LAND CORNER RECORDATION CERTIFICATE
Filing Requirement of Act 74, Mich. PA 1970

For Corners In:
Cheboygan
(County)
1. Public Land Survey
2. Property Controlling in Section
3. Miscellaneous Property in Section
4. Lot No:
5. Private Claims:

Register of Deeds Stamp & File Number



I, Carl T. Kiiskila, in a field survey on April 28, 2010 do hereby state that under requirements of PA 74, Michigan PA of 1970, the corner points mentioned in lines 1 and 2 above were in conformance with regulations and rules therefore as required in the current manual of survey instructions of the United States Department of the Interior, Bureau of Land Management or by a decree of a Court of Law and/or that the corner points mentioned in lines 3, 4 and 5 above were in conformance with the rules of the Michigan Board of Land Surveyors or by a Decree of a Court of Law; established, re-established, monumented, recovered, found as expressed below:

NOTE: Not more than 2 corners, all in the same town and range, may be recorded on this certificate.

A. Description of original monument and accessories and/or subsequent restoration:

K-3 - Section cor. comm.. to sec.'s 1,2,11,12, T34N,R1W

1850 - GLO - Austin Burt - Set post corner of sec.'s 1-2-11 & 12
Cedar 14 S20°W 17 links
Cedar 10 N40°E 7 links
Prior 1951 - MSHD - Witness fence cor. S66°W 45.3'; Aspen 8° N 74°E 41.10' - According to 1951 corner record by Dean C. DeLamater.
1951 - Land Corner Record - L.A.p118 - Dean C. DeLamater, P.S.#5778 - This corner was established by For. Div crew, while making a partial resurvey of this township. Cor. is on W. edge county rd. No orig. evidence. Set 1" pipe buried. 5" W.Birch N24°W 130 L; Telephone Pole S32°W 84 L; 22' N. of Fence line west.
1966 - Rewitnessed - Dean C. Delamater,P.S.#5778 - Cor. was taken out by powerline. 1/2" Iron rod 2' long placed in new fill. 4" B.Fir S84°W 71.40' NBT
2000 - L.C.R.C. - L.3, p.130 - Delmer E. Porter, P.S.#15410 - Fd. 1/2" rod in c/l road. Survey line going west & wits by Bischer, P.S.#22428. S30°W 92.70' T. Pole; S71°W 45.02' Fe. Cor.; N48°W 69.10' Aspen stump; S73°W 63.18' Tamarack.

K-4 - 1/4 Corner comm. to sec.'s 11&12, T34N,R1W

1850 - GLO - Austin Burt - Set post 1/4 sec. corner. Hemlock 14" S58°E 31 Links Hemlock 10" N17°E omitted
1985 - L.C.R.C. - L.1,p.330A - Delmer E. Porter, P.S.#15410 - Re-established by single proportion. This corner falls in the center of a traveled road & is assumed lost. Set 1/2" rod & LLS cap. N83°W 61.32' 12" Maple; East 16.69' Fe. Post; N32°E 53.72' 6" Maple
2000 - L.C.R.C. - L.3, p.130 - Delmer E. Porter, P.S.#15410 - Fd. 1/2" rod no cap. N32°E 53.50' 8" Maple; N81°E 26.15' 13" Bam.; S67°E 55.10' 5" Spruce; N52°W 61.30' Bam.

B. Description of corner evidence found and/or method applies in restoring or re-establishing corner:

K-3 - Section cor. comm.. to sec.'s 1,2,11,12, T34N,R1W

Found 1/2"x24" bar 2.5' east of N-S c/l gravel road per 1966 cor. record by DeLamater. Bar was just under surface of road and the top was bent. Accepted found bar as a careful and faithful reestablishment of the position of the original corner. Replaced fd. bar w/standard DNR monument. Set monument 6" below grade, found no other evidence to dispute the location for the corner.

K-4 - 1/4 Corner comm. to sec.'s 11&12, T34N,R1W

Found 1/2"x18" bar 6.5' east of N-S c/l gravel road per L.C.R.C. - L.1,p.330A by DeLamater. Bar was just under surface of road and the top was badly bent. Accepted found bar as a careful and faithful reestablishment of the position of the original corner. Replaced fd. bar w/standard DNR monument. Set monument 8" below grade, found no other evidence to dispute the location for the corner.

C. Description of monument for corner and accessories established to perpetuate locating the position of the corner:

K-3 - Section cor. comm.. to sec.'s 1,2,11,12, T34N,R1W

Stamped 4" dia. aluminum cap on 1"x 36" galvanized pipe.

Witnesses:

S30°E 68.55' to set N&T on E side Fence Post
S26°W 116.10' to set N&T on NW side twin 10" &4" Tamarack
S64°W 63.08' to set N&T at old N&T on N side 13" Tamarack
N50°W 43.05' to set N&T on N side 6" Power Pole

* Previous witness of record.

K-4 - 1/4 Corner comm. to sec.'s 11&12, T34N,R1W

Stamped 4" dia. aluminum cap on 1"x 36" galvanized pipe

Witnesses:

N24°E 53.50' to set N&T at old nail on NW side 11" S. Maple
S76°E 55.00' to set N&T at old nail on N side 8" Spruce
S36°W 105.00' to set N&T on NW side 12" Ash
N88°W 33.05' to fd. 1/2" CIR#41099
N87°W 39.38' to 5" dia. pipe 7' tall

* Previous witness of record.

Signed by:

Carl T Kiiskila

Surveyor's Michigan License No.:

33981

Date:

6-15-10

