

MICHIGAN  
DEPARTMENT OF CONSERVATION  
FORESTRY DIVISION

# LAND CORNER RECORD

T. 35 N. R. 1W

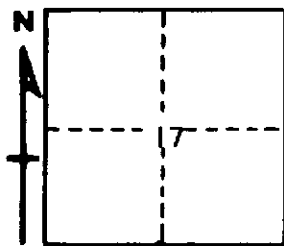
CHEBOYGAN COUNTY

DESCRIPTION OF CORNER 1/4 CORNER COMMON TO SECTIONS 17 - 20

CORNER MONUMENT 1" PIPE WITH 4" ALUMINUM CAP

DATE MONUMENT PLACED AND WITNESSED JUNE 25, 1965

WITNESSES TO CORNER.....



CIRCLE CORNER REGISTERED

6" BALSAM N6W 26.2

8" CEDAR S6W 54.9

AND

DESCRIPTION IN DETAIL AS TO HOW CORNER WAS LOCATED AND IDENTIFIED OR RESTORED.

THIS CORNER WAS SET BY PROPORTIONATE MEASUREMENT, MIDPOINT ON LINE BETWEEN SECTION CORNERS. FALLS IN OLD RAILROAD GRADE, U.S.B.T. EVIDENCE DESTROYED. CHECKS GOOD WITH STREAM CROSSING WEST AND OTHER FEATURES OF RECORD.

SURVEYOR'S SEAL

SIGNED

*Kenneth J. Ostling*  
REGISTERED LAND SURVEYOR

DATE JULY 1, 1965

K. J. OSTLING, #10068