

# LAND CORNER RECORDATION CERTIFICATE

Filing Requirement of Act 74, Mich. PA 1970

For Corners In:  
Cheboygan  
(County)

Located In

Corner Code #

1. Public Land Survey	T		R		
	T		R		
2. Property Controlling in Section	S 10	T 35N	R 01E	14	
	S	T	R		
3. Miscellaneous Property in Section	S 10	T 35N	R 01E	1 1/4 WC	
	S	T	R		

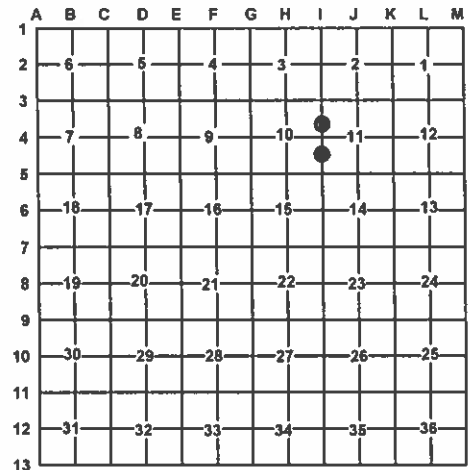
4. Lot No: Recorded Plat:

5. Private Claims:

I, Carl T. Kiiskila, in a field survey on May 4, 2011 do hereby state that under requirements of PA 74, Michigan PA of 1970, the corner points mentioned in lines 1 and 2 above were in conformance with regulations and rules therefore as required in the current manual of survey instructions of the United States Department of the Interior, Bureau of Land Management or by a decree of a Court of Law and/or that the corner points mentioned in lines 3, 4 and 5 above were in conformance with the rules of the Michigan Board of Land Surveyors or by a Decree of a Court of Law; established, re-established, monumented, recovered, found as expressed below:

**NOTE: Not more than 2 corners, all in the same town and range, may be recorded on this certificate.**

Register of Deeds Stamp & File Number



A. Description of original monument and accessories and/or subsequent restoration:

14 - S 1/16 Corner common to sections 10 & 11, T35N, R01E 13/4 - Wit Cor. to M.C. on sec. line comm. to sec.'s 10 & 11, T35N, R01E

None

1989 - L.C.R.C. - L.002, p.91- James H. Granger, P.S. #16041  
- No corner evidence found. Set concrete monument on projection of section line to water. 4" Walnut S73°E 1.81'; 4" Walnut N37°W 5.53'; 10" Cedar N68°W 35.93'; 16" Birch S62°W 26.40'

B. Description of corner evidence found and/or method applies in restoring or re-establishing corner:

14 - S 1/16 Corner common to sections 10 & 11, T35N, R01E 13/4 - Wit Cor. to M.C. on sec. line comm. to sec.'s 10 & 11, T35N, R01E

Found 3/4" pipe 32' West of centerline of NW-SE power-line as the best available evidence for the position of the corner. Drove 2" dia. stamped aluminum cap on 5/8"x17" rebar in center of found pipe.

Found and accepted 1/2" x 18" CIR #15410 as the best available evidence for the position of a witness corner to the original meander corner. Replaced found CIR w/ 2" AC on 5/8"x34" rebar. Found no other evidence to dispute the location for the corner.

C. Description of monument for corner and accessories established to perpetuate locating the position of the corner:

14 - S 1/16 Corner common to sections 10 & 11, T35N, R01E 13/4 - Wit Cor. to M.C. on sec. line comm. to sec.'s 10 & 11, T35N, R01E

2" dia. stamped aluminum cap on 5/8" x 34" rebar

2" dia. stamped aluminum cap on 5/8" x 34" rebar

Wit: N12°E 18.25' to set N&T on E side 12" Oak  
N81°E 72.13' to set N&T on SW side 16" Oak  
S48°E 117.53' to set N&T on NE side P. Pole  
S46°W 11.80' to set N&T on N side 3" R. Pine  
Set Blue Carsonite post w/ location tag 1' North

Wit: S67°E 12.02' to set N&T on NE side 8" B. Fir  
S22°E 19.56' to set N&T on W side 5" B. Fir  
S02°E 84.42' to fd. conc. mon. (1/4 cor. to sec.'s 10 & 11)  
N74°W 35.91' to set N&T on NE side 13" Cedar  
North 0.47' to 5/8"x48" rebar  
North 30' to water's edge

Signed by:

Carl T. Kiiskila

Date:

5-1-12

Surveyor's Michigan License No.:

33981

