

LAND CORNER RECORDATION CERTIFICATE

Filing Requirement of Act 74, Mich. PA 1970

For Corners In:
Cheboygan
(County)

Located In

Corner Code #

1. Public Land Survey T 35N R 1E G-9
T 35N R 1E H-9
2. Property Controlling in Section S T R
S T R
3. Miscellaneous Property in Section S T R
S T R

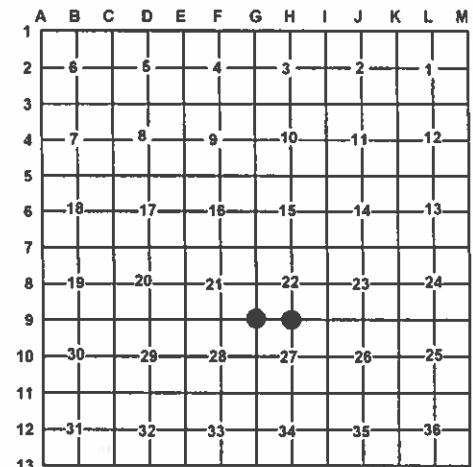
4. Lot No: Recorded Plat:

5. Private Claims:

I, Carl T. Kiiskila, in a field survey on March 30, 2011 do hereby state that under requirements of PA 74, Michigan PA of 1970, the corner points mentioned in lines 1 and 2 above were in conformance with regulations and rules therefore as required in the current manual of survey instructions of the United States Department of the Interior, Bureau of Land Management or by a decree of a Court of Law and/or that the corner points mentioned in lines 3, 4 and 5 above were in conformance with the rules of the Michigan Board of Land Surveyors or by a Decree of a Court of Law; established, re-established, monumented, recovered, found as expressed below:

NOTE: Not more than 2 corners, all in the same town and range, may be recorded on this certificate.

Register of Deeds Stamp & File Number



A. Description of original monument and accessories and/or subsequent restoration:

G-9 – Section Corner comm. to sec.'s 21,22,27&28, T35N, R01E

1840 – GLO – Brevort- Set post cor. of sects. 21,22,27 & 28

Y. Pine 12 S28°W 5 1/2

Y. Pine 9 N31°E 38

1975 – L.C.R.C. – L.1, p.167 – Delmer E. Porter, P.S.#15410

Fd. 1" pipe buried in road.

N40°W 32.25' 10" W. Birch

S35°W 22.04' 8" Maple

N45°E 27.83' 8" Maple

1996 – L.C.R.C. – L.3, p.68 – Thomas G. Hall, P.S.#41100

1" Pipe

N52°E 28.00' 10" Maple

S51°W 22.33' 12" Maple in clump

N17°W 46.41' 6" Maple

N36°E 49.29' 8" Aspen

H-9 – 1/4 Corner comm. to sec.'s 22 & 27, T35N, R01E

1840 – GLO – Brevort- Set qr. Section post.

Elm 18 N48°W 23

Cedar 12 S45°E 5

1975 – L.C.R.C. – L.1, p.167 – Delmer E. Porter, P.S.#15410

Fd. 1/2" rod, wooden stake 33' South.

North 25.53' Fe. Cor. Post

S24°W 29.70' 12" Basswood

S15°E 26.37' 12" Basswood

2001 – L.C.R.C. – L.3, p.165 – Delmer E. Porter, P.S.#15410

Fd. 1/2" rod.

S62°W 36.25' 5" Spruce

N27°E 26.05' 9" Elm

N51°E 47.71' Power Pole

S07°E 26.79' 7" Basswood

B. Description of corner evidence found and/or method applies in restoring or re-establishing corner:

G-9 – Section Corner comm. to sec.'s 21,22,27&28, T35N, R01E

Found and accepted 3/4" x 22" dia. pipe in trail road & gravel road intersection as the best available evidence for the position of the original corner. Replaced found pipe with standard DNR monument. Found no other evidence to dispute the location for the corner.

H-9 – 1/4 Corner comm. to sec.'s 22 & 27, T35N, R01E

Found 1/2" rod, 5" below grade in centerline of E-W gravel road. Accepted found rod as the best available evidence for the position of the original corner. Drove 1" x 24" galvanized pipe with 5/8" plastic P.S. cap# 33981 over found bar. Found no other evidence to dispute the location for the corner.

C. Description of monument for corner and accessories established to perpetuate locating the position of the corner:

G-9 – Section Corner comm. to sec.'s 21,22,27&28, T35N, R01E

4" dia. stamped aluminum cap on 1"x36" galvanized pipe.

Wit: *N16°E 49.28' to set N&T on E side 16" Poplar
N42°E 44.49' to set N&T on NW side 5" W. Pine
S61°E 89.97' to set N&T on SW side 8" R. Pine
S33°W 56.35' to set N&T on NW side 6" W. Pine
*N28°W 46.35' to set N&T on NE side 9" R. Maple

* Witness of previous record.

Carl T. Kiiskila

Surveyor's Michigan License No.: 33981

H-9 – 1/4 Corner comm. to sec.'s 22 & 27, T35N, R01E

1" x 24" galvanized pipe with plastic P.S. cap# 33981

Wit: *N21°E 26.00' to set N&T at old nail on W side 9" Elm
*N45°E 47.72' to fd. N&T on NW side P. Pole
*S13°E 26.68' to set N&T at old nail on E side 7" B. Wood
*S56°W 36.29' to set N&T at old nail on E side 5" Spruce

* Witness of previous record.

5-1-12

