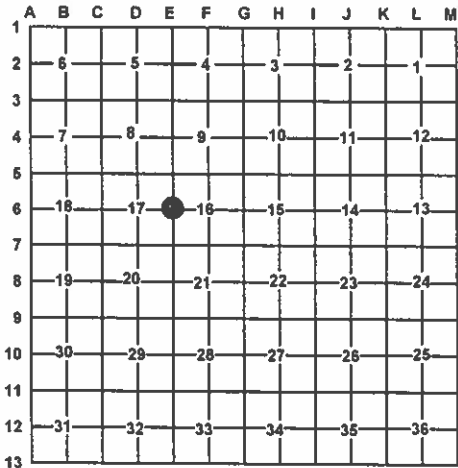


LAND CORNER RECORDATION CERTIFICATE
Filing Requirement of Act 74, Mich. PA 1970

For Corners In:
Cheboygan
(County)
Located In
Corner Code #
1. Public Land Survey
2. Property Controlling in Section
3. Miscellaneous Property in Section
4. Lot No:
5. Private Claims:

Register of Deeds Stamp & File Number



I, Carl T. Kiiskila, in a field survey on September 16, 2009 do hereby state that under requirements of PA 74, Michigan PA of 1970, the corner points mentioned in lines 1 and 2 above were in conformance with regulations and rules therefore as required in the current manual of survey instructions of the United States Department of the Interior, Bureau of Land Management or by a decree of a Court of Law and/or that the corner points mentioned in lines 3, 4 and 5 above were in conformance with the rules of the Michigan Board of Land Surveyors or by a Decree of a Court of Law; established, re-established, monumented, recovered, found as expressed below:

NOTE: Not more than 2 corners, all in the same town and range, may be recorded on this certificate.

A. Description of original monument and accessories and/or subsequent restoration:

E6 - 1/4 Corner comm. to sec.'s 16&17, T36N,R1W

1855 - GLO - Harvey Mellen
Beech 12" N06°W 8 Links
Beech 10" S81 1/2°E 25 Links

2004 - Cert. of Survey - L.972,p31 - Brian K. Fullford, P.S.#41099 -
Show corner on survey with distance going west. Fd. 5/8" bar in mon. box
1' East of C/L M-33. Fence Corner S76°E 34.61'; 18" Twin Beech N56°E
52.54'; 8" Apple S52°W 72.58'; 17" Maple N31°W 100.61'
2007 - Cert. of Survey - Brian K. Fullford, P.S.#41099 -
Show corner on survey with distance going West. Fd. 5/8" bar in mon. box
1' East of C/L M-33. Fence Corner S76°E 34.61'; 18" Twin Beech N56°E
52.54'; 8" Apple S52°W 72.58'; 17" Maple N31°W 100.61'

B. Description of corner evidence found and/or method applies in restoring or re-establishing corner:

E6 - 1/4 Corner comm. to sec.'s 16&17, T36N,R1W

Found 5/8" rod in mon. box 1' East of N-S C/L blacktop road. Occupation running East from corner. Accepted found rod as the best available evidence for the position of the original corner. Found no other evidence to dispute the location for the corner.

C. Description of monument for corner and accessories established to perpetuate locating the position of the corner:

E6 - 1/4 Corner comm. to sec.'s 16&17, T36N,R1W

5/8" rod in mon. box.
Witnesses:
\*N26°W 100.75' to fd. N&T on NE side 17" Maple
\*S78°E 34.68' to fd. N&T on N side cor. fence post
\*N55°E 52.58' to fd. N&T on SE side 13" Twin Beech
\*S54°W 72.60' to fd. N&T on NW side 12" Apple

\* Previous recorded witness.



Carl T Kiiskila
Surveyor's Michigan License No.: 33981

2-25-10