

STATE OF MICHIGAN
DEPARTMENT
OF
NATURAL RESOURCES
LAND CORNER RECORD

Delta COUNTY

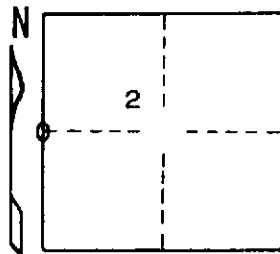
T 40 N R 18 W

DESCRIPTION OF CORNER 1/4 corner for sections 3/2

CORNER MONUMENT 1" iron pipe with 4" aluminum cap

DATE MONUMENT PLACED AND WITNESSED 8/13/70 F. J. Bray

WITNESSES TO CORNER..... 10" Spruce (1/4S) (NBT) N 84° W, 5.6'



8" Spruce (1/4S) (NBT) S 87° E, 16.2'

AND

CIRCLE CORNER REGISTERED

DESCRIPTION IN DETAIL AS TO HOW CORNER WAS LOCATED AND IDENTIFIED OR RESTORED.

This corner was placed on line and the single proportioned distance between section corners to the north and to the south. Corner checks well with stream to south. No original evidence found.

SURVEYOR'S SEAL

DISTRIBUTION:

SIGNED

Frank J. Bray
REGISTERED LAND SURVEYOR

DATE 11/12/70

Frank J. Bray

County Courthouse
Area Forester (Regions I & II)
District or Region Surveyor
Forestry Div., Lansing

R 4047
Rev. 10/68