

STATE OF MICHIGAN
DEPARTMENT
OF
NATURAL RESOURCES
LAND CORNER RECORD

Delta COUNTY

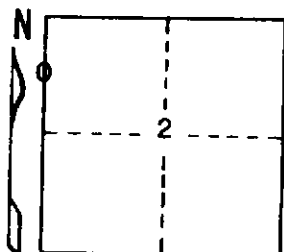
T 43 N R 22 W

DESCRIPTION OF CORNER North 1/16 corner for Sections 3/2

CORNER MONUMENT 1" iron pipe with 1/4" aluminum cap

DATE MONUMENT PLACED AND WITNESSED July 13, 1972 F. J. Bray

WITNESSES TO CORNER..... 9" H. Maple (N1/16) (BT) N57°E, 6.4'



6" H. Maple (N1/16) (BT) S13°E, 9.7'

AND

CIRCLE CORNER REGISTERED

DESCRIPTION IN DETAIL AS TO HOW CORNER WAS LOCATED AND IDENTIFIED OR RESTORED.

This corner was placed on line and the single proportioned distance between the section corner to the north and 1/4 corner to the south. Rotted down wood post and squared tree near.

SURVEYOR'S SEAL

DISTRIBUTION:

Forestry Division, Lansing

SIGNED

Frank J. Bray
REGISTERED LAND SURVEYOR
Frank J. Bray

DATE

8-11-72