

STATE OF MICHIGAN
DEPARTMENT
OF
NATURAL RESOURCES
LAND CORNER RECORD

ALGER, DELTA COUNTY

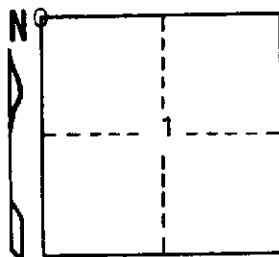
T 44 & 43 N R 22 W

DESCRIPTION OF CORNER Section corner 35/36 T44N-R22W
2/1 T43N-R22W

CORNER MONUMENT 1" iron pipe with 4" aluminum cap

DATE MONUMENT PLACED AND WITNESSED May 8, 1972

WITNESSES TO CORNER..... 5 R. Maple (S. 36) (NBT) S14°W 17.0'



5 Y. Birch (S. 2) (NBT) N56°E 17.2'

AND

CIRCLE CORNER REGISTERED

DESCRIPTION IN DETAIL AS TO HOW CORNER WAS LOCATED AND IDENTIFIED OR RESTORED.

This corner was set by single proportionate measurement from the section corners one mile to the west and one mile to the east.

SURVEYOR'S SEAL

DISTRIBUTION:

SIGNED Frank J. Bray
REGISTERED LAND SURVEYOR
Frank J. Bray

DATE 6-19-72

County Courthouse
Area Forester (Regions I & II)
District or Region Surveyor
Forestry Div., Lansing

R 4047
Rev. 10/68