

MICHIGAN  
DEPARTMENT OF CONSERVATION  
FORESTRY DIVISION

# LAND CORNER RECORD

T. 42N N. R. 28W

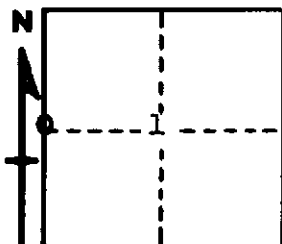
Dickinson COUNTY

DESCRIPTION OF CORNER 1/4 corner between sections 1-2

CORNER MONUMENT 1" pipe with 4" aluminum cap

DATE MONUMENT PLACED AND WITNESSED 10-10-62

WITNESSES TO CORNER..... 16" W. Pine ( $\frac{1}{4}$ S NBT) S 29°E 22 links



16" W. Pine ( $\frac{1}{4}$ S NBT) S55°W 19 links

AND

CIRCLE CORNER REGISTERED

DESCRIPTION IN DETAIL AS TO HOW CORNER WAS LOCATED AND IDENTIFIED OR RESTORED.

This corner replaced at two old wood posts, set by unknown surveyor.

Position checks good with corners North and South, being 21 links south and 21 links west of a point by proportionate measure.

SURVEYOR'S SEAL

SIGNED Billy D. Buckler DATE December 12, 1962  
REGISTERED LAND SURVEYOR  
Billy D. Buckler