

LAND CORNER RECORDATION CERTIFICATE
Filing Requirement of Act 74, Mich. P.A. 1970

For corners in
Bickinson

(County)

Located In:

Corner Code #/

1. Public Land Survey

T 43N R 29W

NS

T R

T R

T R

2. Property Controlling
in Section

S 22 T 43N R 29W

10

S 15 T 43N R 29W

1

3. Miscellaneous
Property in Sec.

S T R

S T R

Register of Deeds Stamp & File Number

4. Lot No. , Recorded Plat

5. Private Claims

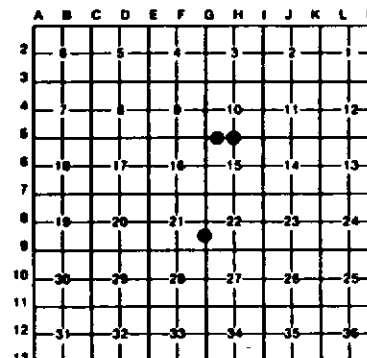
1 May 05, 1994

NS May 04, 1994

I, Stephen J. Szyszkoski, in a field survey on 10 May 02, 1994, 19

do hereby certify that under requirements of P.A. 74, Michigan P.A. of 1970, the corner points mentioned in lines 1 and 2 above were in conformance with regulations and rules therefore as required in the current manual of survey instructions of the United States Department of the Interior, Bureau of Land Management or by a decree of a Court of Law and/or that the corner points mentioned in lines 3, 4 and 5 above were in conformance with the rules of the Michigan Board of Land Surveyors or by a Decree of a Court of Law, established, re-established, monumented, re-monumented, recovered, found as expressed below:

NOTE: Not more than 4 corners, all in the same town and range, may be recorded on this certificate.



A. Description of original monument and accessories and/or subsequent restoration:

(NS) Quarter corner common to Sections 10-15. Original corner established in 1848 by Harvey Mellen as follows: Set cedar post. Yellow Birch 30 S48E 23, Hemlock 8 N40W 10. Found no subsequent record.

(10-Sec.22) South 1/10 corner between Sections 21-22. Corner not established in the original survey. Found no subsequent record.

(1-Sec. 15) West 1/10 corner between Sections 10-15. Corner not established in the original survey. Found no subsequent record.

B. Description of corner evidence found and/or method applied in restoring or reestablishing corner:

(NS) Original post and accessories not recovered. Found no monumentation at the corner position and no acceptable evidence of the position of the original corner on the ground. Reestablished the corner on a straight line between Section corners 2653.00' East and West, being the proportionate position. At the position for the corner, I placed a 1" I.D. x 32" iron pipe capped with a 4" dia. cast aluminum MONR tablet, appropriately stamped.

(10-Sec.22) Found no evidence of prior monumentation at the corner position. Established the corner on a straight line between Quarter corner 1323.57' North and Section Corner recorded by A.O. Enger in 1900 1323.57' South. At the position for the corner, I placed a 1" I.D. x 32" iron pipe capped with a 4" dia. cast aluminum MONR tablet, appropriately stamped.

(1-Sec.15) Found no evidence of prior monumentation at the corner position. Established the corner on a straight line between Section corner 1326.50' West and Quarter corner 1326.50' East. At the position for the corner, I placed a 1" I.D. x 32" iron pipe capped with a 4" dia. cast aluminum MONR tablet, appropriately stamped.

C. Description of monument for corner and accessories established to perpetuate locating the position of the corner:

(NS) Set 1" pipe with 4" MONR cap.
Blazed and scribed the following new bearing trees:

8" Sugar N35W 5.5' 1/4S NBT"
8" Sugar N20E 21.0' 1/4S NBT"
5" Sugar S05E 15.1' 1/4S NBT"
9" Aspen S27W 15.4' 1/4S NBT"

Set a 3" squared aspen post adjacent.
Bearings are magnetic.

(10) Set 1" pipe with 4" MONR cap.
Blazed and scribed the following bearing trees:

4" Sugar N03W 10.7' 1/10S BT"
12" Sugar S55E 60.6' 1/10S BT"
12" Sugar S05E 35.5' 1/10S BT"
6" Sugar S02W 10.4' 1/10S BT"

Set a 2" squared sugar post adjacent.
Bearings are magnetic. Distances horizontal.

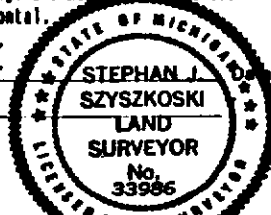
(1) Set 1" pipe with 4" MONR cap.
Blazed and scribed the following bearing trees:

4" Sugar S02W 47.2' 1/10S BT"
7" Sugar N01W 37.9' 1/10S BT"
7" Sugar N20W 0.9' 1/10S BT"
8" Sugar N72E 30.2' 1/10S BT"

Set a 4" squared sugar post adjacent.
Bearings are magnetic. Corner falls at the north edge of a clearcut.

Signed by Stephen J. Szyszkoski

Surveyor's Michigan License No. 33286



7-14-94