

LAND CORNER RECORDATION CERTIFICATE

Filing Requirement of Act 74, Mich. P.A. 1970

For corners in
GLADWIN

(County)

Located In:

Corner Code ~~==~~

- | | | | |
|---------------------------------------|--------------|-------------|-----------------|
| 1. Public Land Survey | T <u>18N</u> | R <u>2E</u> | <u>E-6, F-6</u> |
| | T | R | |
| | T | R | |
| | T | R | |
| 2. Property Controlling in Section | S <u>16</u> | T | R <u>3, 5</u> |
| | S | T | R |
| 3. Miscellaneous Property in Sec. | S | T | R |
| | S | T | R |

Register of Deeds Stamp & File Number

4. Lot No. _____, Recorded Plat _____
5. Private Claims _____

I, C.T. KIISKILA, in a field survey on JULY 26, 19 94,
do hereby certify that under requirements of P.A. 74, Michigan P.A. of 1970, the corner points mentioned
in lines 1 and 2 above were in conformance with regulations and rules therefore as required in the
current manual of survey instructions of the United States Department of the Interior, Bureau of Land
Management or by a decree of a Court of Law and/or that the corner points mentioned in lines 3, 4 and 5
above were in conformance with the rules of the Michigan Board of Land Surveyors or by a Decree of a
Court of Law; established, re-established, monumented, re-monumented, recovered, found as
expressed below:

NOTE: Not more than 4 corners, all in the same town and range, may be recorded
on this certificate.

- A. Description of original monument and accessories and/or subsequent restoration:

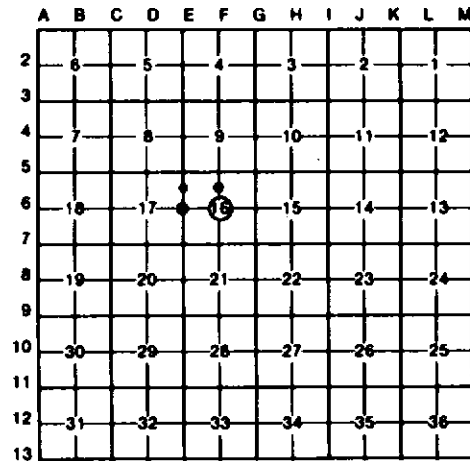
E-6

F-6

3

5

(NO CONCLUSIVE EVIDENCE OF G.L.O. CORNER MONUMENT, CORNER BT'S,
LINE TREES, TOPOGRAPHY, ETC. AS CALLED OUT IN THE G.L.O. LINE
NOTES; UNLESS NOTED IN ITEM "B" BELOW.)



- B. Description of corner evidence found and/or method applied in restoring or reestablishing corner:

E-6

F-6

3

5

REESTABLISHED NW 1/4 COR SEC 16
AT RECORD DIST SOUTH OF NW COR
S-16 & RECORD ANGLE OFF N LINE
S-16, AT NW COR. S-16 PER
J.MEYERS SURVEY DATA FOR S-16.

ACCEPTED P.S. J.MEYERS IRON
FOR CTR OF SEC 16 PER J.M.
CERT OF SURVEY, ORDER NO.
G-866617 DATED SEPT. 17, 1986.

ESTABLISHED SW COR OF NW 1/4
OF NW 1/4 OF SEC 16 PER
STANDARD BLM INSTRUCTIONS. NE
MEAS. 157' ± 4' NORTH TO
STREAM, U.S. G.L.O. WOULD
EQUAL 132' N. OF 60.00 CH.
MARK(1/8 COR) TO SOUTH EDGE OF
4' WIDE STREAM, COURSE NW.

FD P.S. J.MEYERS IRON FOR NE
COR OF SE 1/4 OF NW 1/4 OF
SEC 16. J.M. SET IRON IN 1978
CERT OF SURVEY IN NE 1/4 OF
NW 1/4 OF SEC 16.

- C. Description of monument for corner and accessories established to perpetuate locating the position of the corner:

E-6

F-6

3

5

SET BLM MON W/CED POST.

FD 1/2" REROD W/RLS CAP. ADDED
LOC TAG TO FD CED POST.

SET 5/8" X 3/4" REROD W/ CAP &
CED POST.

FD CAPPED IRON #14099.

10" ELM N49°W 17.4'
12" OAK N63°E 21.0'
6" MAPLE S82°E 16.5'
14" MAPLE S41°W 8.9'

113" TW B OAK WEST 22.97'
8" N OAK N10°E 36.62'
7" MAPLE(CLP6) S80°E 43.30'
16" N OAK S50°E 43.36'

5" MAPLE S16°E 11.2'
18" ASH N82°W 6.3'
10" MAPLE N17°E 12.5'
5" MAPLE S71°E 8.6'
CTR 3' STREAM COURSE N-S
EAST 20.6'

10" OAK S24°E 25.3'
13" OAK N77°W 38.1'
6" MAPLE N73°E 28.0'
10" OAK N30°W 26.4'
FENCE POST N04°E 4.7'
SET CED POST S75°E 0.8'

ALLS J. MEYERS 1896 WIT.

Signed by Carl T. Kiiskila

Date 3-28-97

Surveyor's Michigan License No. 33981