

SURVEY &
REMONUMENTATION

NOV 12 1997

COMMISSION

For corners in

Gogebic

(County)

Located in:

Corner Code #

1. Public Land Survey

Section 11 T45N R45W

I-3-4

2. Property Controlling
in Section

3. Miscellaneous
Property in Sec.

T R
T R
T R
T R
S T R
S T R
S T R
S T R

Other
013

4. Lot No. _____, Recorded Plat _____
5. Private Claims _____

Meander corner to sections 10 and 11, T45N, R45W

I, John R. Garske, in a field survey on Sept/Oct., 19 97 do hereby state that under requirements of P.A. 74, Michigan P.A. of 1970, the corner points mentioned in lines 1 and 2 above were in conformance with regulations and rules therefore as required in the current manual of survey instructions of the United States Department of the Interior, Bureau of Land Management or by a decree of a Court of Law and/or that the corner points mentioned in lines 3, 4 and 5 above were in conformance with the rules of the Michigan Board of Land Surveyors or by a Decree of a Court of Law; established, re-established, monumented, recovered, found as expressed below:

NOTE: Not more than 2 corners, all in the same town and range, may be recorded on this certificate.

A. Description of original monument and accessories and/or subsequent restoration:

Original survey by Austin Burt, D.S. in 1851, set a wood post from which:
Tamarack 8 - S48W - 32 links
Tamarack 6 - S20E - 27 links

1956 - Anthony Genisot, P.E. shows the corner on the Plat of Chaney Lake with no B.T's.

B. Description of corner evidence found and/or method applied in restoring or reestablishing corner:

I found concrete monuments set by Genisot along the shore of Chaney Lake marking lots 56, 57 and 58 and also along the road to the lots. I could find no evidence of the meander corner which falls in a very wet area in a floating bog. I calculated the position from the found monuments and set the corner on the section line in an area less wet. See sketch on back. I monumented the corner as a special meander corner (S.M.C.) at the 1/16th corner location.

(Research on file)

PEER GROUP APPROVED

Richard L. Drazin 10/8/97
COUNTY REPRESENTATIVE

C. Description of monument for corner and accessories established to perpetuate locating the position of the corner:

I set a monument at the W.C.M.C. which is the 1/16th corner.

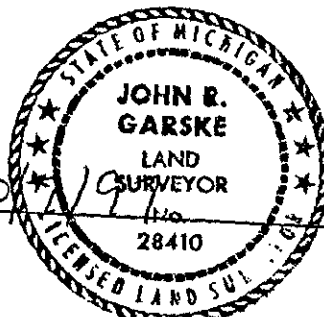
I set a 3/4" dia. x 48" long alum. rod with a 3 1/4" dia. alum. cap stamped to identify the corner from which I established the following:

5" ash	N32°W	3.11 feet
6" ash	N76°E	12.18 feet
14" y. birch	S17°E	5.01 feet
6' steel sign post	S60°W	1.44 feet

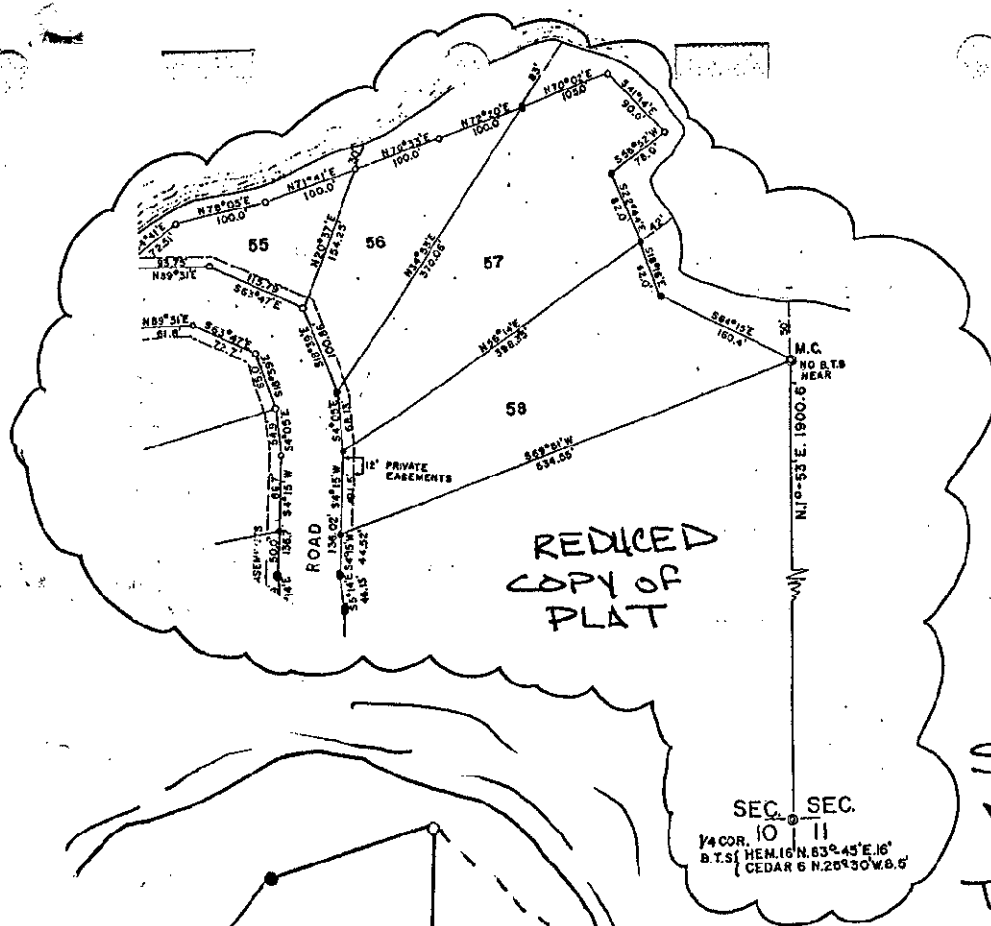
Signed by John R. Garske
Surveyor's Michigan License No. 28410

Date

10/8/97



45-43/I-3-4



SKETCH
No Scale
T45N, R45W

