

MICHIGAN
DEPARTMENT OF CONSERVATION
FORESTRY DIVISION

LAND CORNER RECORD

T. 26 N.R. 9 W

GRAND TRAVERSE COUNTY

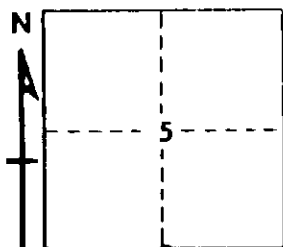
DESCRIPTION OF CORNER 1/4 corner common to Sections 5 & 8

Set

CORNER MONUMENT Std. Dept. Mon. in 36" well point in J. Pine Marsh with Cedar Guard Post.

DATE MONUMENT PLACED AND WITNESSED December 1968

WITNESSES TO CORNER..... (Alum cap broken off pipe)



CIRCLE CORNER REGISTERED

14" R. Pine S 75 E 213.9'

20" R. Pine S 15 W 266.9'

AND

DESCRIPTION IN DETAIL AS TO HOW CORNER WAS LOCATED AND IDENTIFIED OR RESTORED.

This corner was set by single proportion between found section corner to E. and set section corner to W.

SURVEYOR'S SEAL

SIGNED

Carl F. Beyer
REGISTERED LAND SURVEYOR

DATE

1/14/69

#12028