

# LAND CORNER RECORDATION CERTIFICATE

Filing Requirement of Act 74, Mich. PA 1970

For Corners In:

Grand Traverse

(County)

Located In

Corner Code #

1. Public Land Survey	T		R	
	T		R	
2. Property Controlling in Section	S 28	T 26N	R 11W	1
	S 28	T 26N	R 11W	2
3. Miscellaneous Property in Section	S	T	R	
	S	T	R	

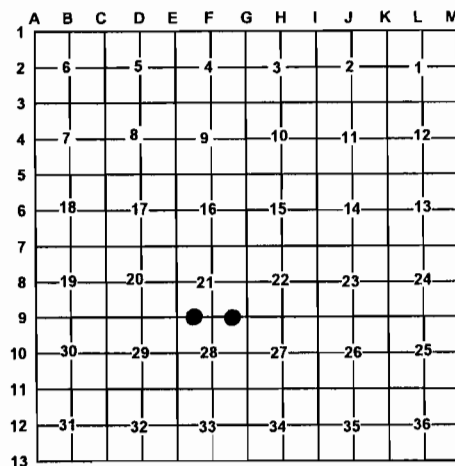
4. Lot No: Recorded Plat:

5. Private Claims:

I, Craig W. McVean, in a field survey on May 16, 2007 do hereby state that under requirements of PA 74, Michigan PA of 1970, the corner points mentioned in lines 1 and 2 above were in conformance with regulations and rules therefore as required in the current manual of survey instructions of the United States Department of the Interior, Bureau of Land Management or by a decree of a Court of Law and/or that the corner points mentioned in lines 3, 4 and 5 above were in conformance with the rules of the Michigan Board of Land Surveyors or by a Decree of a Court of Law; established, re-established, monumented, recovered, found as expressed below.

**NOTE: Not more than 2 corners, all in the same town and range, may be recorded on this certificate.**

Register of Deeds Stamp & File Number



A. Description of original monument and accessories and/or subsequent restoration:

1 - **1890** - CSR L. 1, p. 135 - C. P. Tuller  
Cedar post. Birch 14" N51°W 13.5'  
Cedar 7" North 10'  
- **2006** - Notes from "Andersen & Crain" - set

2 - **1891** - CSR - L. 1, p. 135 & L. 10, p. 190 - C. P. Tuller  
East (from random ¼ post) 20.12 chs. Here we find a post  
set at 80 rods West of NE Cor. of Sec.

B. Description of corner evidence found and/or method applied in restoring or re-establishing corner:

1 - W 1/16 Corner common to Sec. 21 & 28 - Found cap #30074 on ½" x 24" rebar in Cedar swamp. Cut lines W & N.  
No evidence of cedar post by Tuller. ½" CIR #30074 accepted as the best available evidence of the position of the corner.

2 - E 1/16 Corner common to Sec. 21 & 28 - Set stamped 2" Alum. Cap in 5/8" x 4' long iron rebar in Cedar swamp per standard BLM procedure. No evidence of post noted by Tuller.

C. Description of monument for corner and accessories established to perpetuate locating the position of the corner:

1 - Replaced ½" CIR w/ stamped 2" Alum. Cap on 5/8" x 5' long iron rebar.  
Set Blue Carsonite Post with location tag 1' East  
S56°W 18.38' to set Nail and Tag in SE side 4" Cedar  
S33°E 16.01' to set Nail and Tag in SW side 3" Tamarack  
N50°E 22.68' to set Nail and Tag in NW side 3" R. Maple  
N74°W 22.94' to set N & T in S. side 3" Fir  
Set Steel fence post 0.9' West

2 - 2" Alum. Cap on 5/8" x 4' long iron rebar.  
Set Blue Carsponte Post with location tag 1' NE  
S57°W 46.39' to set Nail and Tag in S. side 20" W. Pine  
S66°E 35.43' to set Nail and Tag in N. side 22" W. Pine  
scribed 'XBT'  
N52°W 28.31' to set Nail and Tag in SW side 13" Cedar  
N39°E 34.67' to set Nail and Tag in SE side 9" Cedar

Signed by:

Craig W. McVean

Surveyor's Michigan License No.:

39088

Date:

9/10/2007

