

LAND CORNER RECORDATION CERTIFICATE
Filing Requirement of Act 74, Mich. P.A. 1970

SEP 17 1999

For corners in

Houghton
(County)

Located In: 26

Corner Code #:

SECTION

1. Public Land Survey T 54N R 33W TL 1-9
T R
T R
T R
2. Property Controlling S T R
in Section S T R
3. Miscellaneous S T R
Property in Sec. S T R

MARY SCHOOS 05/19/99 2
HOUGHTON COUNTY, REGISTER 13:54
LC 3/ 605 PAU Fee: 9.00
Page 1 of 1

Register of Deeds Stamp & File Number

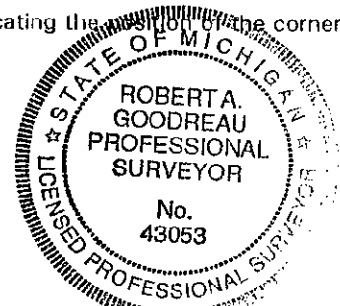
4. Lot No. , Recorded Plat
5. Private Claims

I, Robert A. Goodreau in a field survey on September, 1998 do hereby state that under requirements of P.A. 74, Michigan P.A. of 1970, the corner points mentioned in lines 1 and 2 above were in conformance with regulations and rules therefore as required in the current manual of survey instructions of the United States Department of the Interior, Bureau of Land Management or by a decree of a Court of Law and/or that the corner points mentioned in lines 3, 4 and 5 above were in conformance with the rules of the Michigan Board of Land Surveyors or by a Decree of a Court of Law; established, re-established, monumented, recovered, found as expressed below:

NOTE: Not more than 2 corners, all in the same town and range, may be recorded on this certificate.

| | A | B | C | D | E | F | G | H | I | J | K | L | M |
|----|---|----|---|----|---|----|---|----|---|----|---|----|---|
| 1 | | | | | | | | | | | | | |
| 2 | | 6 | | 5 | | 4 | | 3 | | 2 | | 1 | |
| 3 | | | | | | | | | | | | | |
| 4 | | 7 | | 8 | | 9 | | 10 | | 11 | | 12 | |
| 5 | | | | | | | | | | | | | |
| 6 | | 18 | | 17 | | 16 | | 15 | | 14 | | 13 | |
| 7 | | | | | | | | | | | | | |
| 8 | | 19 | | 20 | | 21 | | 22 | | 23 | | 24 | |
| 9 | | | | | | | | | | | | | |
| 10 | | 30 | | 29 | | 28 | | 27 | | 26 | | 25 | |
| 11 | | | | | | | | | | | | | |
| 12 | | 31 | | 32 | | 33 | | 34 | | 35 | | 36 | |
| 13 | | | | | | | | | | | | | |

- A. Description of original monument and accessories and/or subsequent restoration:
1-9 Post Set - Sugar 15" S10°W, 8 LKS, Yellow Birch 6" N66°E, 18 LKS
Per land corner recordation certificate Liber 1, P. 895 by Robert W. Crampton: 1 1/4" iron pipe was witnessed with a surveying tag nailed to 6" Balsam tree N30°E, 6.35'. 36" pine tree S76°E, 40.09', 28" pine tree, S14°W, 54.78'. 28" pine tree S82°W, 24.96'.
- B. Description of corner evidence found and/or method applied in restoring or reestablishing corner:
1-9 found 1 1/2" I.D. pipe as described by R.W. Crampton; new nails and tags were found with yellow paint and Tag #39478. Accepted corner as found.
- C. Description of monument for corner and accessories established to perpetuate locating the position of the corner:
1-9 Set 2" Brass remon cap on top of found pipe.
8" Balsam fir, with duplex and brass tag, N48°E, 6.40'
34" White pine, with duplex and brass tag, S50°E, 40.00'
25" White pine, with duplex and brass tag, S16°W, 54.64'
28" White pine, with duplex and brass tag, S85°W, 24.89'



Signed by R.A. Goodreau
Surveyor's Michigan License No. 43053

Date 3-30-99