



107806

RECORDED
HILLDALE CO. MICH.
'95 DEC 21 PM 3 41

LIBER 3 PAGE 113
REMONUMENTATION
LAND CORNER RECORDATION CERTIFICATE
Filing Requirement of Act 74, Mich. P.A. 1970

For corners in

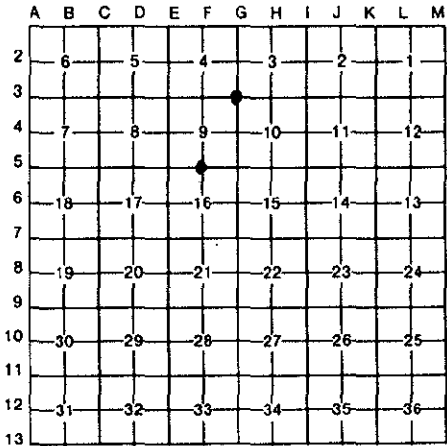
Located In: HILLDALE (County) Corner Code F-5 G-3

1. Public Land Survey	T <u>7s</u> R <u>2W</u>	<u>F-5 G-3</u>
	T <u> </u> R <u> </u>	
	T <u> </u> R <u> </u>	
	T <u> </u> R <u> </u>	
2. Property Controlling in Section	S <u> </u> T <u> </u> R <u> </u>	
	S <u> </u> T <u> </u> R <u> </u>	
3. Miscellaneous Property in Sec.	S <u> </u> T <u> </u> R <u> </u>	
	S <u> </u> T <u> </u> R <u> </u>	
4. Lot No. <u> </u> , Recorded Plat <u> </u>		
5. Private Claims <u> </u>		

Julia Vonzandt
REG. OF DEEDS
JAN 30 1996
Register of Deeds Stamp & File Number
COMMISSION

I, JOHN MAXSON in a field survey on 28 NOVEMBER, 19 95
do hereby certify that under requirements of P.A. 74, Michigan P.A. of 1970, the corner points mentioned in lines 1 and 2 above were in conformance with regulations and rules therefore as required in the current manual of survey instructions of the United States Department of the Interior, Bureau of Land Management or by a decree of a Court of Law and/or that the corner points mentioned in lines 3, 4 and 5 above were in conformance with the rules of the Michigan Board of Land Surveyors or by a Decree of a Court of Law; established, re-established, monumented, re-monumented, recovered, found as expressed below:

NOTE: Not more than 4 corners, all in the same town and range, may be recorded on this certificate.



A. Description of original monument and accessories and/or subsequent restoration:

F-5	G-3	
1825 GLO WILLIAM BROOKFIELD POST	1825 GLO WILLIAM BROOKFIELD POST	1876 GEORGE MARK
SOUTH 27 lks 8" W.OAK	N16W 64 lks 10" ELM	30" STONE, BRICK, STAKE
N53W 27 lks 12" HICKORY	N34E 52 lks 12" ELM	NO WITNESS
1874 R. BULLARD	1871 GEORGE MARK	
STONE, BRICK	STAKE	
S02W 42.5 lks 6" HICKORY	N27W 119 lks 18" B.ASH	
	N57E 121 lks SWAMP OAK	

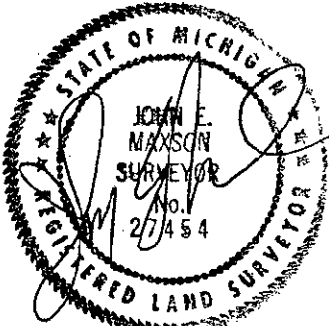
B. Description of corner evidence found and/or method applied in restoring or reestablishing corner:

F-5
DID NOT FIND A STONE AT THE CORNER AS R. BULLARD SET. MEASUREMENTS TAKEN FROM E-5 TO F-5, WHERE F-5 WAS OCCUPATION TO THE SOUTH, WAS 2601.50' COMPARED TO RECORD OF 2594.46'. ALONG WITH THAT, TOOK A MEASUREMENT AT OCCUPATION AT EIGHTH CORNER, WHICH IS PROPORTIONATE TO THE MEASUREMENT OF THE HALF MILE MEASUREMENT. ACCEPTED THIS OCCUPATION AS THE BEST AVAILABLE EVIDENCE OF THE POSITION OF THE ORIGINAL CORNER.

G-3
DID NOT FIND THE CORNER AS SET BY GEORGE MARK AND THERE WAS NO OCCUPATION. THE CORNER WAS REESTABLISHED BY SINGLE PROPORTIONATE MEASUREMENT FROM H-3 TO I-3 AND ALONG THAT LINE TO G-3. ACCEPTED AS A CAREFUL AND FAITHFUL REESTABLISHMENT OF THE ORIGINAL CORNER.

C. Description of monument for corner and accessories established to perpetuate locating the position of the corner:

F-5	G-3
SET 5/8" x 36" REBAR W/CAP	SET 5/8" x 36" REBAR W/CAP
SOUTH 25.75' FNC. POST	N19E 54.07' 12" CEDAR
N55E 96.00' P.POLE	N73E 62.48' 16" OAK
N45W 27.36' WITNESS IRON W/CAP #27454	S29W 144.40' 24" GROUP CHERRY
S45E 36.53' WITNESS IRON W/CAP #27454	N13W 84.85' 10" ELM



Signed by John E Maxson Date 21 December 1995
Surveyor's Michigan License No. 27454